

APERAK EDIFACT User Guide

valenciaport  **pcs.net**
P o r t C o m m u n i t y S y s t e m

Change Control

VERSION	CHANGED SECTIONS	CHANGE DESCRIPTION	CHANGE DATE
1.0	All	Initial version	30/09/2006

1 // INTRODUCTION	4
1.1 // PURPOSE.....	4
1.2 // CONTENTS	4
1.3 // REFERENCE DOCUMENTS	4
1.4 // SHORTHANDS.....	4
2 // MESSAGING	5
3 // APERAK SEGMENT TABLE	6
4 // SEGMENT UNB	7
5 // SEGMENT UNH	8
6 // SEGMENT BGM.....	10
7 // SEGMENT DTM	11
8 // SEGMENT FTX	12
9 // SEGMENT RFF	13
10 // SEGMENT NAD	14
11 // SEGMENT CTA.....	16
12 // SEGMENT COM.....	17
13 // SEGMENT ERC	18
14 // SEGMENT FTX	19
15 // SEGMENT RFF	20
16 // SEGMENT FTX	21
17 // SEGMENT UNT.....	22
18 // SAMPLES	23

1 // Introduction.

1.1 // Purpose

This user manual is a subset of the implementation guide of the UN/EDIFACT APERAK message version D00B published by the Joint Transport Group (JM4).

The function of this message is:

- a) to acknowledge or reject to a message issuer the receipt of his message by valenciaportpcs.net
- b) Marítima Valencia will reply to the COPRAR message with an Aperak message, accepting or rejecting it.

1.2 // Contents

This documents consists of:

- Chapter 1 Introduction.
- Chapter 2 Messaging between actors.
- Chapter 3 APERAK message structure
- Chapter 4 Samples.

1.3 // Reference documents

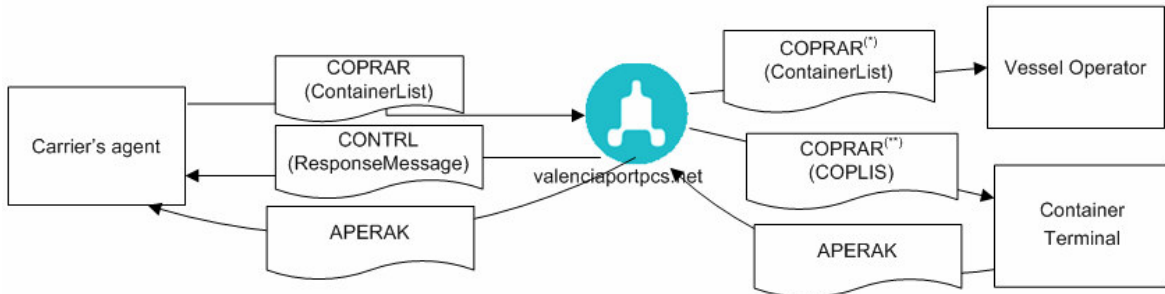
[1] United Nations Directories for Electronic Data Interchange for Administration, Commerce and Transport UN/EDIFACT	<i>http://www.unece.org/trade/untdid/d00b/trmd/aperak_c.htm APERAK Version D Release 00B</i>
[2] UNTDID, Part 4, Chapter 2.3 UN/ECE UNSM	<i>General Introduction, Section 1.</i>
[3] APERAK user manual	<i>PR06049-STEIN_MN09 Guía Usuario Mensaje APERAK</i>

1.4 // Shorthands

APV	<i>Autoridad Portuaria de Valencia</i>
ED	<i>Data Element</i>
ISO	<i>International Organization for Standardization</i>
O	<i>Optional</i>
M	<i>Mandatory</i>
SMDG	<i>User Group for Shipping Lines and Container Terminals</i>
UN/EDIFACT	<i>United Nations Directories for Electronic Data Interchange for Administration, Commerce and Transport</i>
UN/LOCODE	<i>United Nations Code for Trade and Transport Locations</i>

2 // Messaging

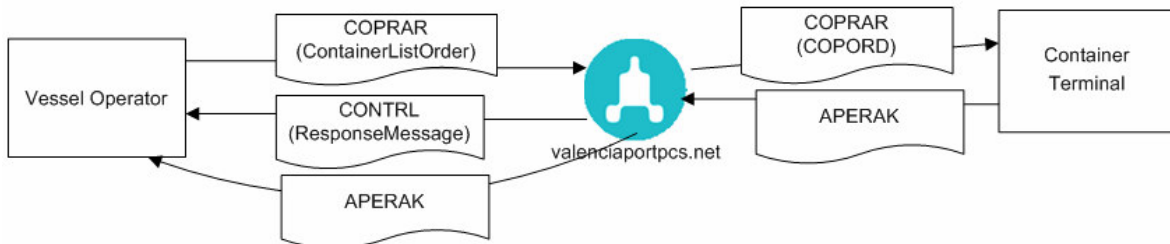
Original, replace and cancellation for COPRAR-COPLIS sent by goods agent



(*) If CB is not working with Valenciaportpcs.net, the COPRAR sent by CM is forwarded directly to the Stevedoring Company
CONTRL(ResponseMessage) will be always sent by valenciaportpcs.net in response to some received message, acknowledging o rejecting it.

The APERAK sent by Marítima Valenciana to Valenciaportpcs.net will be forwarded to the maritime agent who demands it .

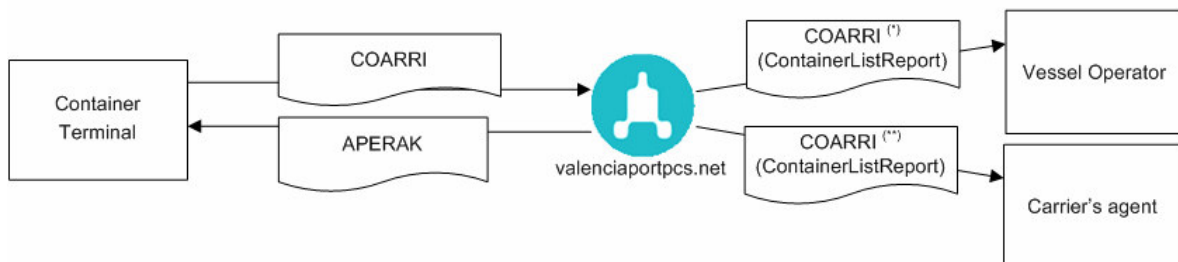
Original, replace and cancellation for COPRAR-COPORD sent by vessel operator



CONTRL(ResponseMessage) will be always sent by valenciaportpcs.net in response to some received message, acknowledging o rejecting it.

The APERAK sent by Marítima Valenciana to Valenciaportpcs.net will be forwarded to the maritime agent who demands it

Original and replace for COARRI sent by stevedoring company



(*) COARRI will be always sent to the CB, even if the original COPRAR is not registered in Valenciaportpcs.net.

(**) CM will only receive his containers

3 // APERAK Segment Table

<u>Pos. No.</u>	<u>Seg. ID</u>	<u>Name</u>	<u>Req. Des.</u>	<u>Max.Use</u>	<u>Group Repeat</u>	<u>Notes and Comments</u>
0005	UNB	Interchange Header	C	1		
0010	UNH	Message Header	M	1		
0020	BGM	Beginning of Message	M	1		
0030	DTM	Date Time Period	C	9		
0040	FTX	Free Text	C	9		
0050		Segment Group 1: RFF	C		9	
0060	RFF	Reference	M	1		
0070		Segment Group 2: NAD-CTA-COM	C		9	
0080	NAD	Segment error indication	M	1		
0090	CTA	Contact information	C	9		
0100	COM	Communication contact	C	9		
		Segment Group 3: ERC-FTX-SG4	C		99999	
0110	ERC	Application error information	M	1		
	FTX	Free Text				
0120		Segment Group 4: RFF-FTX	C		9	
0130	RFF	Reference	M	1		
0140	FTX	Free Text	C	9		
0150	UNT	Message Trailer	M	1		
0160	UNZ	Interchange Trailer	C	1		

4 // Segment UNB

Segment: **UNB** Interchange Header

Position: 0005
Group:
Level: 0
Usage: Mandatory
Max Use: 1
Purpose: Identify an interchange
Comments:

Notes: *Sample segment :*
UNB+UNOA:2+VALENCIAPORT+TTTT+060125:0140+20060125012296+++++

Data Element Summary

<u>Attributes</u>	<u>Data Element</u>	<u>Component Element</u>	<u>Name</u>		
M	S001		SYNTAX IDENTIFIER	M	1
M		0001	Syntax identifier	M	an..6
			<i>UNOA indicating the use of level 'A' character set.</i>		
M		0002	Syntax version number	M	n1
			<i>2 indicating the use of level 'A' character set.</i>		
M	S002		SENDER IDENTIFICATION	M	1
M		0004	Sender identification	M	an..35
			<i>Name code of the message sender: Mailbox assigned by Valenciaportpcs.net to the sender</i>		
			<i>VALENCIAPORT</i>		
X		0007	Code list identification code	€	an..4
X		0008	Return address	€	an..14
M	S003		RECIPIENT IDENTIFICATION	C	1
M		0010	Recipient identification	M	an..35
			<i>Name code of the message recipient: Mailbox assigned by Valenciaportpcs.net to the recipient</i>		
			<i>TTTT</i>		
X		0007	Code list identification code	€	an..4
X		0014	Address	€	an..14
M	S004		DATE/TIME OF PREPARATION	M	1
M		0017	Date of preparation	M	n6
			<i>Preparation date of the message (format YYYYMMDD)</i>		
M		0019	Time of preparation	M	n4
			<i>Preparation date of the message (format HHMM)</i>		
M	0020		INTERCHANGE CONTROL REFERENCE	M	an..14
			<i>A reference allocated by the sender, uniquely identifying the interchange. This reference must also be transmitted in the UNZ segment.</i>		
X	S005		RECIPIENT REFERENCE	€	1
X		0022	Recipient reference	€	an..14
X		0025	Code list recipient reference	€	an..2
X	0026		APPLICATION REFERENCE	€	an..14
X	0029		PROCESS PRIORITY CODE	€	an..1
X	0031		RESPONSE TYPE CODE	€	n1
X	0032		COMMUNICATION IDENTIFIER	€	an..35
X	0035		TRIAL IDENTIFIER	€	n1

5 // Segment UNH

Segment: **UNH** Message Header
Position: 0010
Group:
Level: 0
Usage: Mandatory
Max Use: 1
Purpose: A service segment starting and uniquely identifying a message. The message type code for the Container discharge/loading order message is APERAK.
 Note: Container discharge/loading order messages conforming to this document must contain the following data in segment UNH, composite S009:
 Data element 0065 APERAK 0052 D 0054 00B 0051 UN
Comments: The 0057 element indicates if the Aperak is sended by VP or by the stevedoring company
Notes: *Sample segment :*
 UNH+VPPP6200310230+APERAK:D:00B:UN:VPRCLO'

Data Element Summary

<u>Attributes</u>	<u>Data Element</u>	<u>Component Element</u>	<u>Name</u>		
M	0062		MESSAGE REFERENCE NUMBER <i>Unique message reference assigned by the sender. This reference must also be transmitted in the UNT segment.</i> <i>For the purposes of a proper handling of this message by the valenciaportpcs.net platform the message reference number shall follow the following structure:</i> VVVVACCCCCCCC <i>Where:</i> <ul style="list-style-type: none"> VVVV (an4) is the identification code of the sender party assigned by valenciaportpcs.net A: String 1, Último dígito del año en curso en el que se emite el documento. CCCCCCCC (an9) is a unique reference assigned by the sender party to the message. 	M	1 an..14
M	S009		MESSAGE IDENTIFIER	M	1
M		0065	Message type identifier APERAK <i>Container discharge/loading order message</i>	M	an..6
M		0052	Message type version number D <i>Draft version/UN/EDIFACT Directory</i>	M	an..3
M		0054	Message type release number 00B <i>Release 2000 – B</i>	M	an..3
M		0051	Controlling agency UN <i>UN/CEFACT</i>	M	an..2
R		0057	Association assigned code VPRCLO <i>Aperak sended by the container terminal to the agent in response to the COPRAR message</i> CONTRL <i>Aperak sended by Valenciaportpcs.net to the agent in response to some received message</i>	C	an..6
Ø	0068		COMMON ACCESS REFERENCE <i>Additional message reference (if required)</i>	€	1 an..35
X	S010		STATUS OF THE TRANSFER	€	1

X	0070	Sequence message transfer number	M	n..2
X	0073	First/last sequence message transfer indication	€	a1

6 // Segment BGM

Segment: **BGM** Beginning of Message
Position: 0020
Group:
Level: 0
Usage: Mandatory
Max Use: 1
Purpose: A segment to indicate the type and function of the message and to transmit the identifying number..

Comments:

Although element 4343 (Response Type Code) is optional, valenciaportpcs.net will always send this element requesting the reception of a message acknowledgement.

Possible values are:

- *Document acknowledgment response: "962" in 1001 data element and "29" in 1225 data element.*
- *Error response: "963" in 1001 data element and "27" in 1225 data element.*

If element 1004 has not be included by the sender, it will be automatically assigned by the system with the following structure: UUUUJANNNNNNNNNN

UUUU: InterchangeHeader\InterchangeSender\SenderIdIdentification

A: Year (Now)

NNNNNNNNN : sequential number assigned by the system

Notes: *Sample segment :
BGM+962+VTTT6000001125+29'*

Data Element Summary

<u>Attributes</u>	<u>Data</u>	<u>Component</u>			
	<u>Element</u>	<u>Element</u>	<u>Name</u>		
R	C002		DOCUMENT/MESSAGE NAME	C	1
R		1001	Document name code	C	an..3
		962	Document acknowledgment response		
		963	Error response		
X		1131	Code list identification code	E	an..17
X		3055	Code list responsible agency code	E	an..3
X		1000	Document name	E	an..35
R	C106		DOCUMENT/MESSAGE IDENTIFICATION	C	1
R		1004	Document identifier	C	an..35
			Sender's unique reference number for the document.		
X		1056	Version identifier	E	an..9
X		1060	Revision identifier	E	an..6
R	1225		MESSAGE FUNCTION CODE	C	1 an..3
		29	Accepted		
		27	Rejected		
X	4343		RESPONSE TYPE CODE	E	1 an..3

7 // Segment DTM

Segment: **DTM** Date/Time/Period
Position: 0030
Group:
Level: 1
Usage: Conditional (Required)
Max Use: 9
Purpose: A segment to indicate a date and/or time applying to the whole message, such as date and time of document or message issue.

Comments: *Only one occurrence of this segment is used. The document/message send date is mandatory.*

Notes: *Sample segment :
 DTM+137: 200611141215:203'*

Data Element Summary

<u>Attributes</u>	<u>Data Element</u>	<u>Component Element</u>	<u>Name</u>		
M	C507		DATE/TIME/PERIOD	M	1
M		2005	Date or time or period function code qualifier 137 Document/message date/time	M	an..3
R		2380	Date or time or period value Date/time that the message was prepared.	C	an..35
R		2379	Date or time or period format code 203 CCYYMMDDHHMM	C	an..3

8 // Segment FTX

Segment: ~~FTX~~ Free Text

Position: 0040

Group: Segment Group 6 (Equipment Details) Mandatory

Level: 2

Usage: Conditional (Optional)

This segment is not used in the transaction

Max Use: 9

Purpose: A segment to specify free form or processable supplementary information related to the whole message

Comments:

Notes: *Sample segment:*
~~FTX+DCL++ZAE'~~

Data Element Summary

	Data	Component			
	Element	Element	Name		
<u>Attributes</u>					
M	4451		TEXT SUBJECT CODE QUALIFIER	M	1 an..3
X	4453		FREE TEXT FUNCTION CODE	C	1 an..3
D	C107		TEXT REFERENCE	C	1
M		4441	Free text value code	M	an..17
O		1131	Code list identification code	C	an..17
O		3055	Code list responsible agency code	C	an..3
D	C108		TEXT LITERAL	C	1
M		4440	Free text value	M	an..512
O		4440	Free text value	C	an..512
O		4440	Free text value	C	an..512
O		4440	Free text value	C	an..512
O		4440	Free text value	C	an..512
X	3453		LANGUAGE NAME CODE	C	1 an..3
X	4447		FREE TEXT FORMAT CODE	C	1 an..3

9 // Segment RFF

Segment: **RFF** Reference
Position: 0060
Group: Segment Group 1 (Reference) Mandatory (Required)
Level: 3
Usage: Mandatory (Required)

Max Use: 9
Purpose: A segment to provide the reference number to the previous message.
Comments: The ACW value is required. The rest are optional.

Notes: *Sample segment :*
RFF+ACW: 27889000001'

Data Element Summary

<u>Attributes</u>	<u>Data Element</u>	<u>Component Element</u>	<u>Name</u>		
M	C506		REFERENCE	M	1
M		1153	Reference code qualifier	M	an..3
			ACW		Reference number to previous message
			AGO		Document identifier (ed 1004, BGM) to previous message
					Message Reference Number to previous message
					Message Reference Number (ed 0062, UNH) to previous message
R		1154	Reference identifier	C	an..70
X		1156	Document line identifier	C	an..6
X		4000	Reference version identifier	C	an..35
X		1060	Revision identifier	C	an..6

10 // Segment NAD

Segment: **NAD** Name and Address
 Position: 0080
 Group: Segment Group 2 (Name And Address) Conditional
 Level: 2
 Usage: Conditional (Required)
 Max Use: 9
 Purpose: A segment to specify a related address or party, such as: - document sender
 Comments:

*This segment shall be used to indicate the sender to the document:
 For Aperak sented by the container terminal in response to the COPRAR message
 "TR" is used.
 For Aperak sented by valenciaportpcs.net in response to some received message,
 "VP" is used*

Notes: *Sample segment :
 NAD+TR+X99999999+NOMBRE ESTIBADORA '*

Data Element Summary

<u>Attributes</u>	<u>Data Element</u>	<u>Component Element</u>	<u>Name</u>			
M	3035		PARTY FUNCTION CODE QUALIFIER <i>TR Container Terminal</i> <i>VP valenciaportpcs.net</i>	M	1	an..3
O M	C082	3039	PARTY IDENTIFICATION DETAILS Party identifier <i>Company code</i> Codes agreed among valenciaportpcs.net system will be used. <ul style="list-style-type: none"> • <i>Container terminal code</i> • <i>VALENCIAPORT</i> 	C M	1	an..35
Ø		1131	Code list identification code 160 Party identification 172 Carriers	Ø		an..17
Ø		3055	Code list responsible agency code	Ø		an..3
Ø	C058		NAME AND ADDRESS	Ø	1	
M		3124	Name and address description	M		an..35
Ø		3124	Name and address description	Ø		an..35
Ø		3124	Name and address description	Ø		an..35
Ø		3124	Name and address description	Ø		an..35
Ø		3124	Name and address description	Ø		an..35
X	C080		PARTY NAME	C	1	
X		3036	Party name	M		an..35
X		3036	Party name	C		an..35
X		3036	Party name	C		an..35
X		3036	Party name	C		an..35
X		3036	Party name	C		an..35
X		3045	Party name format code	Ø		an..3
X	C059		STREET	Ø	1	
X		3042	Street and number or post office box identifier	M		an..35
X		3042	Street and number or post office box identifier	Ø		an..35

X		3042	Street and number or post office box identifier	C	an..35
X		3042	Street and number or post office box identifier	C	an..35
X	3164		CITY NAME	C	1 an..35
X	C819		COUNTRY SUB-ENTITY DETAILS	C	1
X		3229	Country sub-entity name code	C	an..9
X		1131	Code list identification code	C	an..17
X		3055	Code list responsible agency code	C	an..3
X		3228	Country sub-entity name	C	an..35
X	3251		POSTAL IDENTIFICATION CODE	C	1 an..17
X	3207		COUNTRY NAME CODE	C	1 an..3

11 // Segment CTA

Segment: ~~CTA~~ **Contact Information**
Position: 0090 (Trigger Segment)
Group: Segment Group 5 (Contact Information) Conditional (Optional)
Level: 2
Usage: Mandatory
 This segment is not used in the transaction.
Max Use: 1
Purpose: A segment to identify a person or department of a message sender and/or message recipient, such as: information contact
Comments:
Notes: *Sample segment:*
~~'CTA+IC+:CARGO CONTROL'~~

Data Element Summary

<u>Attributes</u>	<u>Data Element</u>	<u>Component Element Name</u>			
R	3139	CONTACT FUNCTION CODE	C	1	an..3
		<i>IC Information contact</i>			
R	C056	DEPARTMENT OR EMPLOYEE DETAILS	C	1	
X	3413	Department or employee name code	C		an..17
R	3412	Department or employee name	C		an..35
		<i>Contact name</i>			

12 // Segment COM

Segment: **COM** Communication Contact
Position: 0100
Group: Segment Group 5 (Contact Information) Conditional (Optional)
Level: 3
Usage: Conditional (Optional)
 This segment is not used in the transaction.
Max Use: 9
Purpose: A segment to identify a communication number of a person or department to whom communication should be directed.

Comments:

Notes: *Sample segment:*
COM+0181372453:TE'

Data Element Summary

<u>Attributes</u>	<u>Data Element</u>	<u>Component Element Name</u>		
M	C076	COMMUNICATION CONTACT	M	3
M		3148 Communication address identifier <i>Contact number.</i>	M	an..512
M		3155 Communication address code qualifier <i>EM Electronic mail</i> <i>FX Telefax</i> <i>TE Telephone</i> <i>TL Telex</i> <i>XF X.400 address</i>	M	an..3

13 // Segment ERC

Segment: **ERC** Application Error Information
 Position: 0110
 Group: Segment Group 3 (Error Information) **Optional**
 Level: 3
 Usage: Mandatory

Max Use: 999
 Purpose: To identify the type of application error within a message. Autonumeric for CONTRL

Comments:

Notes: *Sample segment :
 ERC+456*

Data Element Summary

<u>Attributes</u>	<u>Data Element</u>	<u>Component Element</u>	<u>Name</u>		
M	C901		APPLICATION ERROR INFORMATION	M	1
M		9321	Application error code <i>Code specifying an application error</i>	M	an..8
X		1131	Code list identification code	€	an..17
X		3055	Code list responsible agency code	€	an..3

14 // Segment FTX

Segment: **FTX** Free Text
Position: 0120
Group: Segment Group 3 (Error Information) Optional
Level: 2
Usage: Conditional (Optional)
Max Use: 1
Purpose: A segment to provide explanation and/or supplementary information related to the specified application error or acknowledgement. For example, the explanation may provide exact details relating to a generic error code.

Comments:

Notes: *Sample segment :*
FTX+AAO+++Error Description

Data Element Summary

<u>Attributes</u>	<u>Data Element</u>	<u>Component Element</u>	<u>Name</u>			
M	4451		TEXT SUBJECT CODE QUALIFIER AAO Error description (free text)	M	1	an..3
X	4453		FREE TEXT FUNCTION CODE	C	1	an..3
D	C107		TEXT REFERENCE	C	1	
M		4441	Free text value code	M		an..17
Ø		1131	Code list identification code 130 Special handling If e4451 = INV ZZZ Mutually defined If e4451 = ACF, DAR or ABS	C		an..17
Ø		3055	Code list responsible agency code 5 ISO (International Organization for Standardization) If e4451 = ACF 184 AU, ACOS (Australian Chamber of Shipping) If e4451 = INV, DAR or ABS	C		an..3
D	C108		TEXT LITERAL	C	1	
M		4440	Free text value Free text	M		an..512
Ø		4440	Free text value	C		an..512
Ø		4440	Free text value	C		an..512
Ø		4440	Free text value	C		an..512
Ø		4440	Free text value	C		an..512
X	3453		LANGUAGE NAME CODE	C	1	an..3
X	4447		FREE TEXT FORMAT CODE	C	1	an..3

15 // Segment RFF

Segment: **RFF** Reference
Position: 0130
Group: Segment Group 4 (Reference) **Optional**
Level: 3
Usage: Mandatory (Required)

Max Use: 1
Purpose: A segment to provide a reference relating to the acknowledgement type or the specified error (e.g. functional entity reference such as equipment level).

Comments: It is not used

Notes: *Sample segment :
 RFF+ZAC'*

Data Element Summary

<u>Attributes</u>	<u>Data Element</u>	<u>Component Element</u>	<u>Name</u>		
M	C506		REFERENCE	M	1
M		1153	Reference code qualifier	M	an..3
			ZEN <i>List level</i>		
			ZAC <i>Container level</i>		
R		1154	Reference identifier	C	an..70
X		1156	Document line identifier	C	an..6
X		4000	Reference version identifier	C	an..35
X		1060	Revision identifier	C	an..6

16 // Segment FTX

Segment: **FTX** Free Text
 Position: 0140
 Group: Segment Group 4 (Reference) Optional
 Level: 3
 Usage: Conditional (Optional)
 Max Use: 1
 Purpose: To provide free form or coded text information about errors.
 Comments:

Notes: *Sample segment :*
FTX+AAO+++Error Description

Data Element Summary

Attributes	Data Element	Component Element	Name			
M	4451		TEXT SUBJECT CODE QUALIFIER AAO Error description (free text)	M	1	an..3
X	4453		FREE TEXT FUNCTION CODE	C	1	an..3
D	C107		TEXT REFERENCE	C	1	
M		4441	Free text value code	M		an..17
Ø		1131	Code list identification code 130 Special handling If e4451=INV ZZZ Mutually defined If e4451=ACF, DAR or ABS	C		an..17
Ø		3055	Code list responsible agency code 5 ISO (International Organization for Standardization) If e4451=ACF 184 AU, ACOS (Australian Chamber of Shipping) If e4451=INV, DAR or ABS	C		an..3
D	C108		TEXT LITERAL	C	1	
M		4440	Free text value Free text	M		an..512
Ø		4440	Free text value	C		an..512
Ø		4440	Free text value	C		an..512
Ø		4440	Free text value	C		an..512
Ø		4440	Free text value	C		an..512
X	3453		LANGUAGE NAME CODE	C	1	an..3
X	4447		FREE TEXT FORMAT CODE	C	1	an..3

17 // Segment UNT

Segment: **UNT** Message Trailer
Position: 0150
Group:
Level: 0
Usage: Mandatory
Max Use: 1
Purpose: A service segment ending a message, giving the total number of segments in the message (including the UNH & UNT) and the control reference number of the message.

Comments:

Notes: *Sample segment :*
UNT+32+VPPP6200310230'

Data Element Summary

<u>Attributes</u>	<u>Data Element</u>	<u>Component Element</u>	<u>Name</u>			
M	0074		NUMBER OF SEGMENTS IN A MESSAGE <i>Total number of segments in the message</i>	M	1	n..6
M	0062		MESSAGE REFERENCE NUMBER <i>Message reference identical to e0062 in UNH segment</i>	M	1	an..14

18 // Samples

UNB+UNOA:2+MARVAL+A46176756+20060327:2003+20060327408240'
UNH+20060327408240+APERAK:D:04A:UN:VPRCLO'
BGM+962+20060327408240+29'
DTM+137:200603272003:203'
RFF+AAY:A46604815'
RFF+ACW:VPDE20061001006'
NAD+TR+A46604815:167:148++MARITIMA VALENCIANA S.A.'
UNT+7+20060327408240'
UNZ+1+20060327408240'

UNB+UNOA:2+VALENCIAPORT+MVAL+60913:1143+2006091311458'
UNH+VPRT6000005192+APERAK:D:00B:UN:CONTRL'
BGM+963+VPRT6000005192+27'
DTM+137:200609131145:203'
RFF+ACW:20060622415205'
RFF+AGO:20060622415205'
NAD+VP+VALENCIAPORT'
ERC+1'
FTX+AAO+++El documento identificado no existe'
UNT+9+VPRT6000005192'
UNZ+1+2006091311458'



valenciaport  **pcs.net**
P o r t C o m m u n i t y S y s t e m

Centro de Atención a Usuarios
Tel.: 902 88 44 24 / 902 88 44 94
www.valenciaportpcs.net
cau@valenciaportpcs.net