



# COPARN (MULTIPLE RO/AOs)

## *Messaging User Guide (EDI)*

This COPARN messaging guide in EDI corresponds to a message with several related Release and/or Acceptance Orders (for the same Booking or BL) for valenciaportpcs.net's Inland Transport Service

# CONTENTS

<b>CONTENTS .....</b>	<b>2</b>
<b>1 // INTRODUCTION.....</b>	<b>9</b>
1.1 // TRACK CHANGES .....	9
1.2 // OBJECT.....	11
1.3 // SCOPE .....	11
1.4 // CONTENTS.....	12
1.5 // ABBREVIATIONS AND ACRONYMS .....	12
1.6 // RELATED DOCUMENTS .....	12
<b>2 // BUSINESS CONTEXT AND ASSOCIATED MESSAGING.....</b>	<b>14</b>
2.1 // MESSAGE FLOW .....	15
<b>3 // DETAILS AND VALIDATIONS .....</b>	<b>20</b>
3.1 // ENCODED DATA.....	27
3.2 // DIFFERENCES WITH THE MESSAGE IFTMIN (COMPLETE UTD).....	27
<b>4 // SPECIAL CONSIDERATIONS: FORMAT AND CONTENT.....</b>	<b>29</b>
4.1 // STATUS INDICATORS .....	29
4.2 // USAGE INDICATORS .....	29
4.3 // OTHER REMARKS.....	29
<b>5 // COPARN MESSAGE STRUCTURE .....</b>	<b>30</b>
5.1 // SUMMARY TABLE .....	32
<b>6 // COPARN MESSAGE ELEMENTS .....</b>	<b>34</b>
6.1 // UNB – INTERCHANGE HEADER .....	34
6.1.1. Purpose .....	34
6.1.2. Comments .....	34
6.1.3. Elements .....	34
6.1.4. EDI example.....	35
6.2 // UNH – MESSAGE HEADER.....	36
6.2.1. Purpose .....	36
6.2.2. Comments .....	36
6.2.3. Elements .....	36
6.2.4. EDI example.....	36
6.3 // BGM – BEGINNING OF MESSAGE.....	37
6.3.1. Purpose .....	37
6.3.2. Comments .....	37
6.3.3. Elements .....	37
6.3.4. EDI example.....	38
6.4 // TMD TRANSPORT MOVEMENT DETAILS.....	39
6.4.1. Purpose .....	39
6.4.2. Elements .....	39
6.4.3. EDI example.....	39
6.5 // FTX – FREE TEXT .....	40
6.5.1. Purpose .....	40
6.5.2. Comments .....	40
6.5.3. Elements .....	40
6.5.4. EDI example.....	40

6.6// RFF SEGMENT GROUP 1: REFERENCE..... 41  
 6.6.1. Purpose..... 41  
 6.6.2. Elements ..... 41  
 6.7// SG1: . . . RFF REFERENCE ..... 42  
 6.7.1. Purpose..... 42  
 6.7.2. Comments ..... 42  
 6.7.3. Elements ..... 42  
 6.7.4. EDI example..... 42  
 6.8// TDT SEGMENT GROUP 2: DETAILS OF TRANSPORT ..... 43  
 6.8.1. Purpose..... 43  
 6.8.2. Elements ..... 43  
 6.9// SG2: . . . TDT DETAILS OF TRANSPORT ..... 44  
 6.9.1. Purpose..... 44  
 6.9.2. Comments ..... 44  
 6.9.3. Elements ..... 44  
 6.9.4. EDI example..... 45  
 6.10// DTM – DATE/TIME PERIOD ..... 46  
 6.11// SG2: . . . RFF REFERENCE ..... 47  
 6.11.1. Purpose..... 47  
 6.11.2. Comments ..... 47  
 6.11.3. Elements ..... 47  
 6.11.4. EDI example..... 47  
 6.12// SG2: . . . LOC SEGMENT GROUP 3: PLACE/LOCATION IDENTIFICATION ..... 48  
 6.12.1. Purpose..... 48  
 6.12.2. Elements ..... 48  
 6.13// SG2: . . . SG3: . . . LOC PLACE/LOCATION IDENTIFICATION ..... 49  
 6.13.1. Purpose..... 49  
 6.13.2. Comments ..... 49  
 6.13.3. Elements ..... 49  
 6.13.4. EDI example..... 50  
 6.14// NAD SEGMENT GROUP 4: NAME AND ADDRESS..... 51  
 6.14.1. Purpose..... 51  
 6.14.1. Elements ..... 51  
 6.15// SG4: . . . NAD NAME AND ADDRESS ..... 52  
 6.15.1. Purpose..... 52  
 6.15.2. Comments ..... 52  
 6.15.3. Elements ..... 54  
 6.15.4. EDI example..... 54  
 6.16// SG4: . . . CTA SEGMENT GROUP 5: CONTACT INFORMATION ..... 56  
 6.16.1. Purpose..... 56  
 6.16.2. Elements ..... 56  
 6.17// SG4: . . . SG5: . . . CTA CONTACT INFORMATION..... 57  
 6.17.1. Purpose..... 57  
 6.17.2. Comments ..... 57  
 6.17.3. Elements ..... 57

6.17.4. EDI example..... 57

6.18 // SG4: . . . SG5: . . . COM COMMUNICATION CONTACT ..... 58

6.18.1. Purpose..... 58

6.18.2. Comments..... 58

6.18.3. Elements ..... 58

6.18.4. EDI example..... 58

6.19 // SG4: . . . RFF REFERENCE..... 59

6.19.1. Purpose..... 59

6.19.2. Elements ..... 59

6.19.3. EDI example..... 59

6.20 // SG4: . . . LOC PLACE/LOCATION IDENTIFICATION..... 60

6.20.1. Purpose..... 60

6.20.2. Comments..... 60

6.20.3. Elements ..... 60

6.20.4. EDI example..... 60

6.21 // GID SEGMENT GROUP 6: GOODS ITEM DETAILS ..... 61

6.21.1. Purpose..... 61

6.21.2. Comments..... 61

6.21.3. Elements ..... 61

6.22 // SG6: . . . GID GOODS ITEM DETAILS..... 62

6.22.1. Purpose..... 62

6.22.2. Comments..... 62

6.22.3. Elements ..... 62

6.22.4. EDI example..... 62

6.23 // SG6: . . . FTX FREE TEXT ..... 63

6.23.1. Purpose..... 63

6.23.2. Comments..... 63

6.23.3. Elements ..... 63

6.23.4. EDI example..... 63

6.24 // SG6: . . . PIA ADDITIONAL PRODUCT ID..... 64

6.24.1. Purpose..... 64

6.24.2. Comments..... 64

6.24.3. Elements ..... 64

6.24.4. EDI example..... 64

6.25 // SG6: . . . MEA SEGMENT GROUP 7: MEASUREMENTS ..... 65

6.25.1. Purpose..... 65

6.25.2. Elements ..... 65

6.26 // SG6: . . . SG7: . . . MEA MEASUREMENTS ..... 66

6.26.1. Purpose..... 66

6.26.2. Comments..... 66

6.26.3. Elements ..... 66

6.26.4. EDI example..... 66

6.27 // SG6: . . . SGP SEGMENT GROUP 9: SPLIT GOODS PLACEMENT ..... 67

6.27.1. Purpose..... 67

6.27.2. Comments..... 67

6.27.3. Elements ..... 67

6.27.4. EDI example..... 67

6.28 // SG6: . . . SG9: . . . SGP SPLIT GOODS PLACEMENT ..... 68

6.28.1. Purpose..... 68

6.28.2. Elements ..... 68

6.28.3. EDI example..... 68

6.29 // SG6: . . . SG9: . . . MEA MEASUREMENTS ..... 69

6.29.1. Purpose..... 69

6.29.2. Comments..... 69

6.29.3. Elements ..... 69

6.29.4. EDI example..... 69

6.30 // SG6: . . . DGS SEGMENT GROUP 10: DANGEROUS GOODS ..... 70

6.30.1. Purpose..... 70

6.30.2. Comments..... 70

6.30.3. Elements ..... 70

6.31 // SG6: . . . SG10: . . . DGS DANGEROUS GOODS ..... 71

6.31.1. Purpose..... 71

6.31.2. Comments..... 71

6.31.3. Elements ..... 71

6.31.4. EDI example..... 72

6.32 // SG6: . . . SG10: . . . FTX FREE TEXT ..... 73

6.32.1. Purpose..... 73

6.32.2. Elements ..... 73

6.32.3. EDI example..... 73

6.33 // SG6: . . . SG10: . . . CTA SEGMENT GROUP 11: CONTACT INFORMATION ..... 74

6.33.1. Purpose..... 74

6.33.2. Elements ..... 74

6.34 // SG6: . . . SG10: . . . SG11: . . . CTA CONTACT INFORMATION ..... 75

6.34.1. Purpose..... 75

6.34.2. Comments..... 75

6.34.3. Elements ..... 75

6.34.4. EDI example..... 75

6.35 // SG6: . . . SG10: . . . SG11: . . . COM CONTACT INFORMATION ..... 76

6.35.1. Purpose..... 76

6.35.2. Comments..... 76

6.35.3. Elements ..... 76

6.35.4. EDI example..... 76

6.36 // EQD SEGMENT GROUP 13: EQUIPMENT DETAILS..... 77

6.36.1. Purpose..... 77

6.36.2. Elements ..... 77

6.37 // SG13: . . . EQD EQUIPMENT DETAILS..... 78

6.37.1. Purpose..... 78

6.37.2. Comments..... 78

6.37.3. Elements ..... 79

6.37.4. EDI example..... 79

6.38 // SG13: . . . RFF REFERENCE ..... 80  
 6.38.1. Purpose ..... 80  
 6.38.2. Comments ..... 80  
 6.38.3. Elements ..... 81  
 6.38.4. EDI example ..... 81  
 6.39 // SG13: . . . EQN NUMBER OF UNITS ..... 82  
 6.39.1. Purpose ..... 82  
 6.39.2. Comments ..... 82  
 6.39.3. Elements ..... 82  
 6.39.4. EDI example ..... 82  
 6.40 // SG13: . . . MEA MEASUREMENTS ..... 83  
 6.40.1. Purpose ..... 83  
 6.40.2. Comments ..... 83  
 6.40.3. Elements ..... 83  
 6.40.4. EDI example ..... 84  
 6.41 // SG13: . . . DIM DIMENSIONS ..... 85  
 6.41.1. Purpose ..... 85  
 6.41.2. Comments ..... 85  
 6.41.3. Elements ..... 85  
 6.41.4. EDI example ..... 85  
 6.42 // SG13: . . . TMP SEGMENT GROUP 14: TEMPERATURE ..... 86  
 6.42.1. Purpose ..... 86  
 6.42.2. Elements ..... 86  
 6.43 // SG13: . . . SG14: . . . TMP TEMPERATURE ..... 87  
 6.43.1. Purpose ..... 87  
 6.43.2. Comments ..... 87  
 6.43.3. Elements ..... 87  
 6.43.4. EDI example ..... 87  
 6.44 // SG13: . . . SEL SEAL NUMBER ..... 88  
 6.44.1. Purpose ..... 88  
 6.44.2. Comments ..... 88  
 6.44.3. Elements ..... 88  
 6.44.4. EDI example ..... 89  
 6.45 // SG13: . . . FTX FREE TEXT ..... 90  
 6.45.1. Purpose ..... 90  
 6.45.2. Comments ..... 90  
 6.45.3. Elements ..... 90  
 6.45.4. EDI example ..... 91  
 6.46 // SG13: . . . HAN HANDLING INSTRUCTIONS ..... 92  
 6.46.1. Purpose ..... 92  
 6.46.2. Comments ..... 92  
 6.46.3. Elements ..... 92  
 6.46.4. EDI example ..... 93  
 6.47 // SG13: . . . NAD SEGMENT GROUP 20: NAME AND ADDRESS ..... 94  
 6.47.1. Purpose ..... 94

6.47.2. Elements .....	94
6.48 // SG13: . . . SG20: . . . NAD NAME AND ADDRESS .....	95
6.48.1. Purpose .....	95
6.48.2. Comments .....	95
6.48.3. Elements .....	95
6.48.4. EDI example .....	97
6.49 // SG13: . . . SG20: . . . DTM DATE/TIME/PERIOD .....	98
6.49.1. Purpose .....	98
6.49.2. Comments .....	98
6.49.3. Elements .....	98
6.49.4. EDI example .....	99
6.50 // SG13: . . . SG20: . . . CTA CONTACT INFORMATION .....	100
6.50.1. Purpose .....	100
6.50.2. Comments .....	100
6.50.3. Elements .....	100
6.50.4. EDI example .....	100
6.51 // SG13: . . . SG20: . . . COM CONTACT INFORMATION .....	101
6.51.1. Purpose .....	101
6.51.2. Comments .....	101
6.51.3. Elements .....	101
6.51.4. EDI example .....	101
6.52 // SG13: . . . SG20: . . . RFF REFERENCE .....	102
6.52.1. Purpose .....	102
6.52.2. Elements .....	102
6.52.3. EDI example .....	102
6.53 // SG13: . . . SG20: . . . FTX FREE TEXT .....	103
6.53.1. Purpose .....	103
6.53.2. Comments .....	103
6.53.3. Elements .....	103
6.53.4. EDI example .....	103
6.54 // SG13: . . . SG20: . . . LOC PLACE/LOCATION IDENTIFICATION .....	104
6.54.1. Purpose .....	104
6.54.2. Comments .....	104
6.54.3. Elements .....	104
6.54.4. EDI example .....	104
6.55 // UNT MESSAGE TRAILER .....	105
6.55.1. Purpose .....	105
6.55.2. Elements .....	105
6.55.3. EDI example .....	105
6.56 // UNZ INTERCHANGE TRAILER .....	106
6.56.1. Purpose .....	106
6.56.2. Elements .....	106
6.56.3. EDI example .....	106
<b>7 // EDI EXAMPLE .....</b>	<b>107</b>





# 1 // Introduction

## 1.1 // Track changes

Version	Parts that change	Change description
25 <sup>th</sup> September 2012	--	Original version
November 19 <sup>th</sup> , 2012	Chapter 2.1 Minor corrections throughout the document	Modification in how export documents are linked, using the container's ISO type instead of the sequence number. Added several minor validations.
March 15 <sup>th</sup> , 2013	Chapters 3 and 6.45.2 6.7.2 Comments 6.14.2 Comments 6.26 SGP SG9 6.45.2 Comments 6.47.3 Elements 6.48.3 Elements	Revised validations about CLEANED_OF_DG and NOT_CLEARED_OF_DG instructions. The booking number is mandatory only for merchant haulage export. Release or acceptance data may not be indicated to generate only the release or acceptance order for that container. Clarification and examples of SGP segment. The booking number is changed for all containers of the document. The name of the driver is indicated in the CTA segment. Release and acceptance dates can also be included if there isn't shipping line.
May 2 <sup>nd</sup> , 2013	6.14.2 Comments	To replace the release or acceptance company its code or National Identification Number must be indicated.
December 18 <sup>th</sup> , 2013	6.47.3. Elements	Leasing Agencies added
May 28 <sup>th</sup> , 2014	Chapter 3 6.45.2 Comments	The particular instruction BOOKING_CHANGE will not be forwarded to any agent.
October 17 <sup>th</sup> , 2014	6.14.2. Comments	If it is an import or an export, merchant haulage, the Logistics Operator is not recognised by valenciaportpcs.net and the Transport Operator is not included then it is mandatory to include a contact with an email address in the Logistics Operator party.
May 26 <sup>th</sup> , 2015	1.6 // Related documents 6.47.3. Elements	Reference to appendix of leasing companies
August 19 <sup>th</sup> , 2015	6.14.2. Comments	The Transport Operator cannot be included when it is merchant haulage.
September 22 <sup>th</sup> ,	6.14.2. Comments	If it is an import, export, export

2015		cancellation or transfer, merchant haulage, the Logistics Operator is not recognised by valenciaportpcs.net and the Transport Operator is not included then it is mandatory to include a contact with an email address in the Logistics Operator party.
December 14th, 2015	6.17.2. Comments 6.34.2. Comments 6.50.2. Comments	It is not possible to repeat a contact detail for the same type of contact.
March 3rd, 2016	6.44.2 Comments	Changes related to the reefer container information.
March 29th, 2016	3. Details and Validations 3.2. Differences with the message IFTMIN (Complete UTD) 6.39. MEA Measurements 6.39.2. Comments 6.39.3. Elements 6.39.4. EDI example 6.45.2. Comments 6.45.3. Elements 7. EDI Example	Two new qualifiers added. The G qualifier indicates the gross weight and the VGM qualifier indicates if the gross weight is verified or not.  New additional instruction for the container "Terminal Weighing".
July 12th, 2016	3. Details and validations 6.7.2. Comments	The booking number is mandatory for export, merchant and carrier haulage.
June 21th, 2017	6.43.2 Comments	A minimum seal is mandatory in imports with full release in equipments that are not open size or platform.
Sep 5th, 2017	6.30.2. Comments 6.36.2. Comments	The PAV authorization number must be valid, an authorization for the berth number and container plate number must exist.  In an export operation the container plate number cannot be active in another document in which the same Container Provider and booking number is used with its acceptance confirmed.
Aug 29th, 2018	6.47.3 Elements	A new type of positioning for Weighing is added
December 7th, 2018	3. Details and Validations 6.45.2. Comments 6.45.3. Elements	New additional instruction for the container "Cold Treatment".
January 11 <sup>th</sup> , 2019	3. Details and Validations 6.45.2. Comments 6.45.3. Elements	New additional instruction for the container "Smart Container"

May 18 <sup>th</sup> , 2020	6.48.2 Comments 6.48.3 Elements 6.48.4 EDI example 7 EDI example	Proposed date by contracting company for release/acceptance orders (code qualifier 396) is now required data and will be considered as activation/validity date. The validity date with code qualifier 157 is not used anymore
03 Nov'20	6.9.2. Comments 6.9.3. Elements	New Next transport details group added to the Main transport
03 Nov'20	6.10.DTM Date/Time	New Requested departure date added to the Next transport details group
03 Nov'20	6.13.2. Comments 6.13.3. Elements	New Next discharge location group added to the Next transport details group
04 Nov'20	3. Details and validations 3.1 Codified data	Next transport details group added Terminal code added

(\*) *The track changes table features the parts of this document which have changed compared to the previous version.*

## 1.2 // Object

The object of this document is to define the user guide for the EDI format corresponding to the XML message for **sending** Release and/or Acceptance Orders, **XML message to which this COPARN is transformed.**

Release/Acceptance Orders are part of the **new** message flow which the valenciaportpcs.net portal has created to facilitate exchanges of documents concerned with the management of Valenciaport's Inland Transport system.

## 1.3 // Scope

The message of Release/Acceptance Orders is part of a set of messages created by valenciaportpcs.net to organise road transport between contracting parties, transport providers, container providers and release and acceptance companies.

This message is used so that the container provider can convey to (mainly) the release and acceptance companies the instructions to release and/or admit one or several containers owned by him. All containers must be associated to a single export (Booking number) or import (BL number) or transfer/transport movement. These release/acceptance instructions can also reach directly both the logistics operator that contracted the maritime transport, as well as the transport operator in charge of the inland transport.

With this message, the container provider will be able to send independently the release/acceptance orders, and valenciaportpcs.net will attempt to merge those documents with the appropriate transport instructions, presenting all involved agents with a **unified vision** of all documents related to a single inland transport expedition: the Unified Transport Document. This message, therefore, is especially applicable in the scenario of **merchant haulage**, where the container providers will not send transport instructions and only need to send the release and acceptance orders for depots and terminal operators to receive the authorization to manage their containers.

This guide can be used **exclusively** by agents who have a **sender** profile for Release and Acceptance Orders (Carriers and their Shipping Agents). Valenciaportpcs.net will process each Release/Acceptance Order contained in this message **independently**, and the agents involved in each document will receive an update to the associated Unified Transport Document, or each

independent Release/Acceptance Order; therefore, this message will never be received by anybody, it is a message than can only be sent to the platform.

## 1.4 // Contents

This guide is divided up into different chapters as shown below:

- Chapter 1 – Introduction
- Chapter 2 – Message flows involved in the process of contracting road transport and instructions about sending replacements and cancellations.
- Chapter 3 – Table featuring all the details contained in Release/Acceptance Orders, as well as remarks about the mandatory nature of certain details and other validations.
- Chapter 4 – General comments about message details, formats, lists used, identification of mandatory data
- Chapter 5 – General structure of the COPARN message (XSD schema).
- Chapter 6 – Details of the Release/Acceptance Orders structure for each of the elements that makes up the message.
- The last chapter contains an example of a complete Release/Acceptance Orders message.

## 1.5 // Abbreviations and acronyms

Término	Significado
AC	Acceptance Company
CC	Contracting Company, Contracting Party
CP	Container Provider
ISO	International Standards Organization
LO	Logistics Operator, Freight Forwarder
PAV	Port Authority of Valencia, or Valenciaport
PCS	valenciaportpcs.net
RC	Release Company
SA	Shipping Agent
SCAC	Standard Carrier Alpha Code
TA	Transport Agent
TO	Transport Operator
UN/LOCODE	United Nations Code for Trade and Transport Locations
UTD	Unified Transport Document
Code	Organization code in valenciaportpcs.net

## 1.6 // Related documents

The following documents describe the rest of the messages available in EDI format for the Inland Transport Service of valenciaportpcs.net:

- *PCS12-TRANS007\_\_ Visión General Transporte Fase 2*

- *PCS11-TRANS010\_\_Messaging User Guide IFTMIN.docx*
- *PCS11-TRANS012\_\_Messaging User Guide COPARN.docx*
- *PCS11-TRANS013\_\_Messaging User Guide CODECO.docx*
- *PCS11-TRANS014\_\_Messaging User Guide COPINO.docx*
- *PCS11-TRANS015\_\_Messaging User Guide APERAK.docx*
- *PCS15-TRANS001\_\_Appendix of Leasing Companies.docx*

## 2 // Business context and associated messaging

---

In this new version, valenciaportpcs.net's Inland Transport service is modelled on two types of documents:

1. **Transport Instructions:** Issued by the contracting party to the transport provider or operator, indicating a definite request for a transport service.

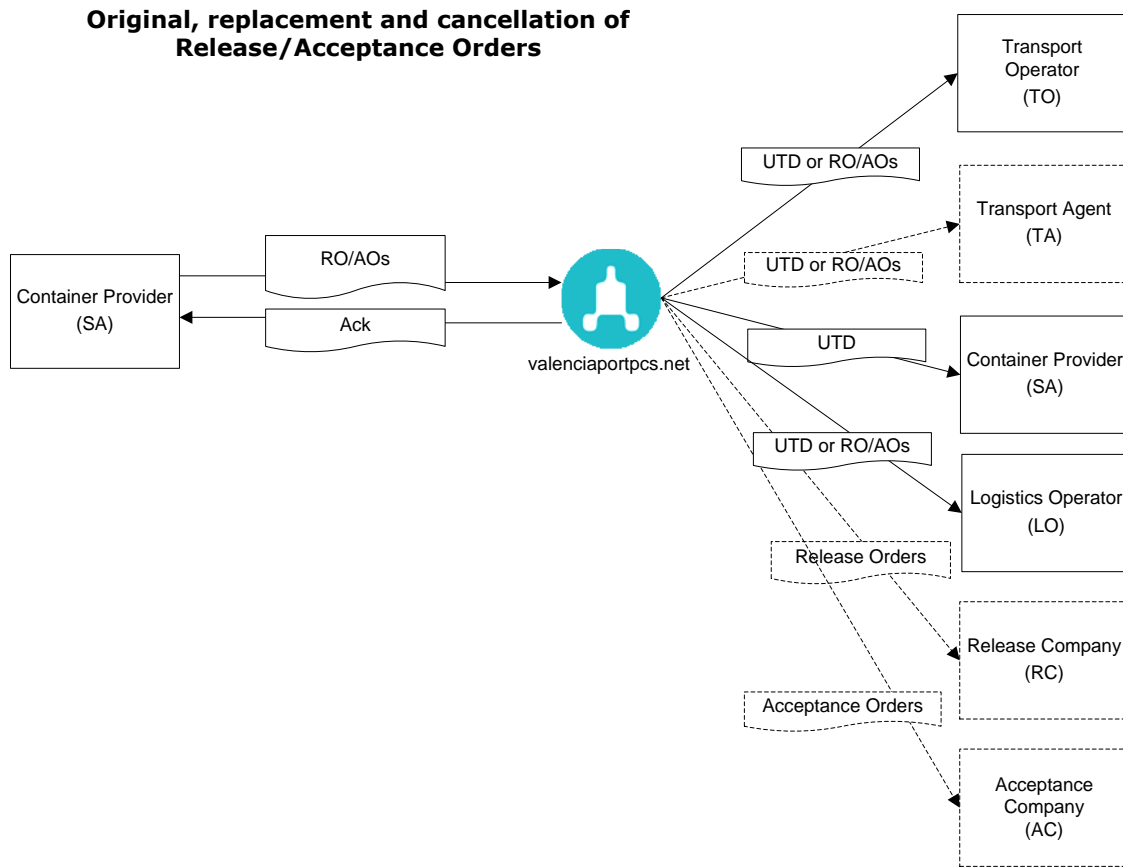
The Transport Instructions will be based on two different scenarios in the Valenciaport context according to whether the Ocean Carrier (or its Shipping Agent) **assigns** the road transport to the Logistics Operator or not (Merchant Haulage or Carrier Haulage). Either the Logistics Operator sends a request to the Shipping Agent for carrier haulage transport, or a Transport Agent is contracted by either of the two parties (according to whether Merchant Haulage or Carrier Haulage is used).

Therefore, the former concept of the Transport Request is now simply included as another part of the Transport Instructions.

2. **Release/acceptance orders:** Sent by the container provider (normally the Shipping Agent) to authorise the release and acceptance of the container in the depots as well as the port and rail terminals.

The release and acceptance orders can be generated together with the transport instructions (in a Complete UTD) when the scenario is carrier haulage and, therefore, contracting party and container provider are the same agent (the Carrier or its Shipping Agent). Additionally, they can also be sent independently of the transport instructions (generally in a merchant haulage scenario), and valenciaportpcs.net will try to "merge" such documents received from different agents in a UTD that includes all data associated to the same inland transport consignment.

## 2.1 // Message flow



When processing a Multiple Release/Acceptance Orders message, valenciaportpcs.net will attempt to merge **each order contained in the message** with an existing Transport Instructions document. If this integration is performed, and both documents are merged into a Unified Transport Document (UTD), updates of the UTD will be sent to each party involved in the document (Transport Operator, Transport Agent, Logistics Operator, or even the Container Provider if he was the sender of both documents and has sent them separately even when he could have done it together).

If, on the other hand, there is no integration of some or all Release/Acceptance Orders included in this message with another Transport Instructions document, each recipient of each Release/Acceptance Order will receive an update of this **independent** document (that is, a message of type Release/Acceptance Order, detailed in the document *PCS11-TRANS004\_Messaging User Guide Release and Acceptance Orders (XML)*, will be sent, and not a group message like the one described in this guide which is only an entry message to the platform, and never an exit message).

Release and Acceptance Companies (Container Depots and Terminals), as recipients of each Release/Acceptance Order, will continue to receive such documents independently as they do now.

Therefore, valenciaportpcs.net will attempt to associate each Release/Acceptance Order in this message with a Transport Instructions document, using the following references:

- PCS Document Number of the associated Transport Instructions
- Contracting party reference of the associated Transport Instructions + code of that agent
- If it is an import document, container number.

- If it is an export document, Booking number or Forwarder Reference Number + container ISO type (documents will be associated when container types are identical or at least **equivalent**, that is: same length (20, 40 or 45 feet) and height (standard or high-cube), and when it also coincides that the container in both documents is categorized as reefer or open-top.

If the Release/Acceptance Order includes the specific document that must be associated with it, through any of the references above, valenciaportpcs.net will search for that document and, after a few additional validations (**matching of involved agents and most relevant data fields**, validations which are described in the next chapter), it will integrate the Release/Acceptance Order being processed in the found UTD.

If the PCS document number has been included, and no document is found in the system that matches that reference or the document has been cancelled, the message will be rejected. For the rest of the search references, if no **active** documents are found, the message will be accepted but the Release/Acceptance Order will not be integrated with any Transport Instructions.

As it has been mentioned, apart from some of these association references matching between documents, certain very relevant data will be validated that is coincides in both documents or, if not, the message will be rejected.

As it will also be detailed in the following chapter, in the process of integrating documents (Transport Instructions and Release/Acceptance Orders) when there is ambiguity in the data specific precedence rules will be applied to define which agent's data has prevalence.

Finally, **document integration cannot be broken**. In other words, if a Transport Instructions and a Release/Acceptance Order have been integrated in a UTD, such integration cannot be rectified (that is, change the association references to break such integration, or substitute a Release/Acceptance Order already integrated in a container of a UTD by a different one). If the references provided were incorrect and this implied the erroneous integration of documents, one of them must be **cancelled** to break such integration.

Release/Acceptance Order **replacements** mean that all the details in each of the original documents are replaced by the new document, with the following exceptions:

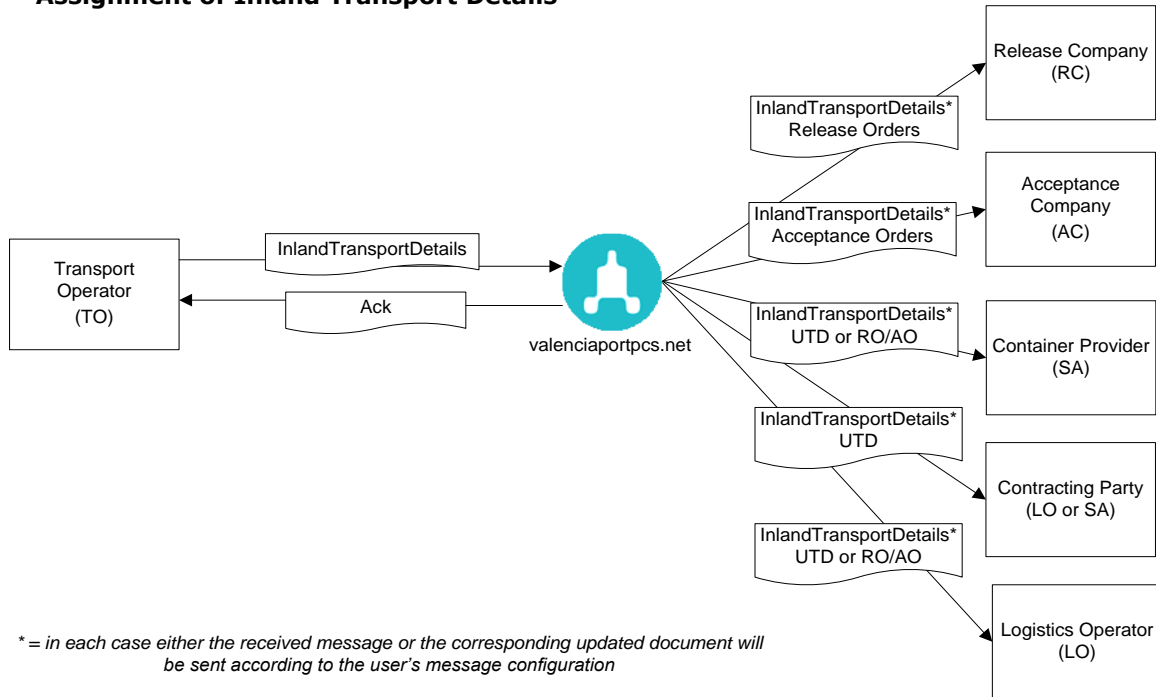
- The sender's reference and the bar codes cannot be modified and should be identical to the original (if they are not included in the replacement, they should be recovered from the original).
- No agent code can be changed, with the exception of Release/Acceptance Companies. If the sender of the order wishes to modify any of the remaining agent codes which where originally indicated, the order must be cancelled and another original sent with a new agent code.
- The only information which is maintained from the previous transport document are the details the original sender does not provide:
  - Actual release and acceptance date
  - Transport authorization number from the Transport Operator and from the Transport Agent
  - The following details from the original are also maintained if the sender does not indicate them in the replacement document (this information may previously have been provided by the Transport Agent or in the release/acceptance confirmation):
    - Container number
    - Vehicle plate numbers (trucks and trailers)
    - Driver details (name, national identity number, mobile)
    - Seals



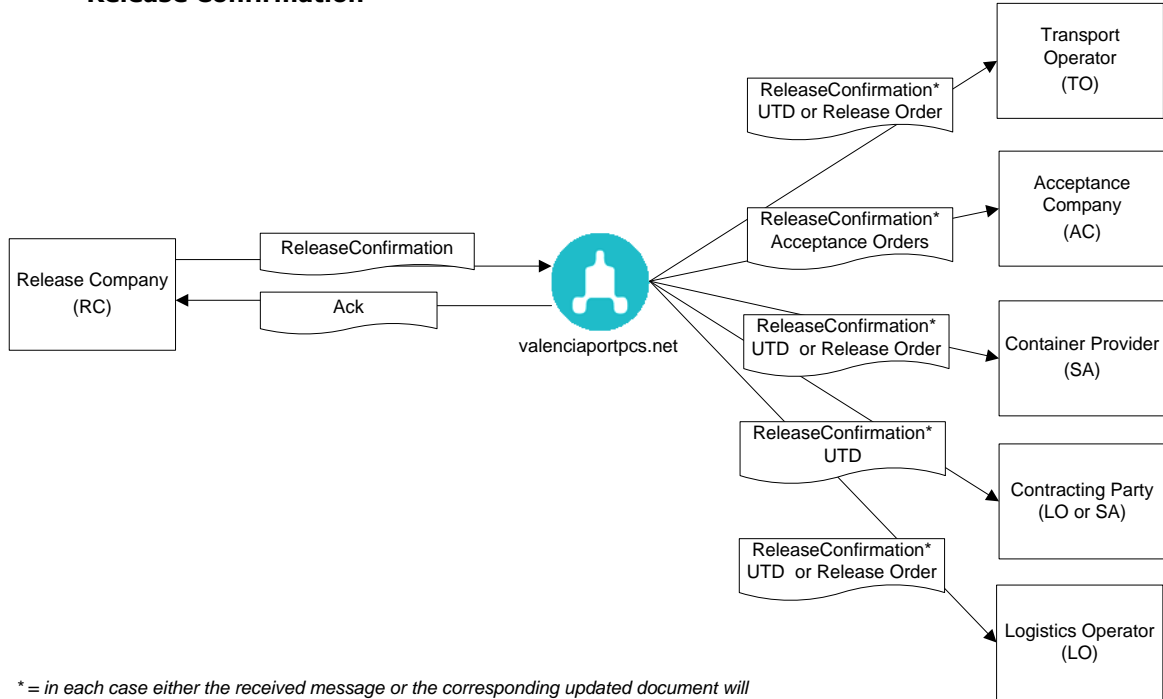
However, if the UTD sender provides any of these details in the replacement document, the previous details will be overwritten.

In addition to the messages the container provider sends to create, replace or cancel Release/Acceptance Orders, each document can also be **updated** by the transport provider (Transport Operator or Transport Agent) and by the companies which release and accept the containers (Depots and Terminals). The following diagrams show these additional message flows for the inland transport documents:

**Assignment of Inland Transport Details**

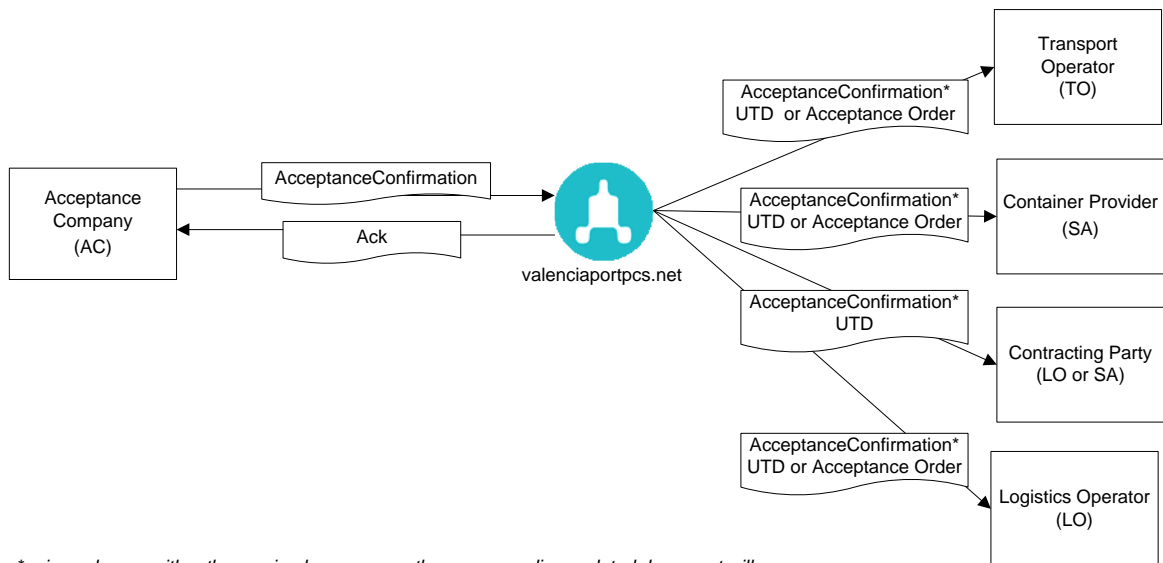


### Release Confirmation



*\* = in each case either the received message or the corresponding updated document will be sent according to the user's message configuration*

### Acceptance Confirmation



*\* = in each case either the received message or the corresponding updated document will be sent according to the user's message configuration*

When a document (be it a UTD or an independent Release/Acceptance Order) is updated, the agents involved in the flow will also receive this update. In general, the user can choose to receive the message which updated the document (for example, the Inland Transport Details sent by the Transport Operator/Agent to provide certain details about the transport service to be carried out). Alternatively, the system can add these details to the document and send a UTD or Release/Acceptance Order message with the new complete version of the document.

As already mentioned, the receivers of a UTD update will have the option to request valenciaportpcs.net to configure them in order to receive each UTD multi-container as **N**

**messages UTD with a single container each one of them.** Data common to all the UTD will be identical in each one of these messages, and each one of them will contain the detail of one of the N containers of the UTD.

### 3 // Details and Validations

The following table shows a list of all the details exchanged in this message, according to the message flow described in the previous section. In addition to the actual details, this table shows:

- Whether the details are mandatory or not, or whether some kind of validation is associated with them.
- Which agents are sent which data. The abbreviations used are CC (Contracting Company/Contracting Party), CP (Container Provider), TO/TA (Transport Operator/Transport Agent), RC (Release Company) and AC (Acceptance Company).
- Which agents are authorised to change details, either in the Transport Details Assignment (sent by the Transport Agent) or in the Release/Acceptance Confirmation (sent by Container Depots or Terminals). The assignments are identified in the TA column and the confirmations in the CF column.
- In a **merchant haulage** scenario, when valenciaportpcs.net merges the Transport Instructions sent by the CC and the Release/Acceptance Orders sent by the CP, there may be ambiguity between the data included by one agent and the other one. In such cases, the following table shows with an **X** the agent whose data takes precedence (and, hence, whose last modification will prevail in the Unified Transport Document that results from the integration). The data fields marked with an **X** must coincide in both documents, or the message will be rejected.

In the case of messages sent to the Release Company or to the Acceptance Company, if the container is empty when released/accepted neither goods details nor specific details which are only applicable to full containers are sent (except for details about previously transported dangerous goods or about oversize dimensions which can also affect the empty container, as well as details for reefer containers to prepare the **release** of an empty container). These details are marked with an X\*

In the Transport Details Assignment messages, the container number can only be modified **if the Shipping Agent which has sent the release/acceptance order authorises the transport agents to modify these details**. This is marked with an X\*

Details	CC	CP	TO/ TA	RC	AC	TA	CF	Remarks
Type of operation (export, import, transfer, transhipment, export cancellation)	X	X	X	X	X			Mandatory
Type of transport (merchant haulage, carrier haulage)	X	X	X	X	X			Mandatory
Rail transport indicator	X	X	X	X	X			
<b>Generic references</b>								
Booking number	X	X	X	X	X			Mandatory for export movements
Bill of Lading Number (BL)	X	X	X	X	X			Inclusion highly recommended, especially for imports

Details	CC	CP	TO/ TA	RC	AC	TA	CF	Remarks
Logistics Operator/Forwarder file number	X	X	X					
Involved parties (code, name, national identity number, document reference, street address, city, UNLOCODE, postal code, contact name and contact details, (mobile))								Code, national identity number and name are mandatory
Container Provider	X	X		X	X			Mandatory if it is a complete UTD, in which case the Container Provider must coincide (code/national identity number) with the Contracting Party.
Transport Operator	X	X	X	X	X	X		Mandatory. Can complete their details in the Transport Assignment
Release Company (for all containers in the message)	X	X	X	X				Mandatory if the Release Order is sent.
Acceptance company (for all containers in the message)	X	X	X		X			Mandatory if the Acceptance Order is sent.
Logistics operator	X	X	X					Mandatory for merchant haulage, recommended in all cases
<b>Road transport details</b>								
Transport Operator Authorization Number	X		X	X	X	X		
Transport Agent Authorization Number	X		X	X	X	X		
<b>Shipping origin details (unloading vessel)</b>								
Voyage number	X	X	X	X				
Berth request number	X	X	X	X				
Vessel code (call-sign)	X	X	X	X				
Vessel name	X	X	X	X				
<b>Shipping destination details (loading vessel)</b>								
Voyage number	X	X	X		X			
Berth request number	X	X	X		X			Mandatory for acceptance of full containers at terminals and depots that require this number, only if it has not been marked as Return to Terminal or rail transport. When indicated, the number is validated against the master table to check that the berth request number exists and is valid (the operation has not been completed, the vessel has not started loading/unloading)
Vessel code (call-sign)	X	X	X		X			
Vessel name	X	X	X		X			
<b>Ports</b>								

Details	CC	CP	TO/ TA	RC	AC	TA	CF	Remarks
Port of origin	X	X	X	X				Validated against the UNLOCODE master table
Loading port	X	X	X	X				Validated against the UNLOCODE master table
Unloading port	X	X	X		X			Mandatory for acceptance of full containers at terminals and depots that require it, only if it has not been marked as Return to Terminal or rail transport. Validated against the UNLOCODE master table
Destination port	X	X	X		X			Validated against the UNLOCODE master table
<b>Next transport details</b>								
Next transport mode	X	X	X		X			Optional for admission orders
Requested departure date	X	X	X		X			Can be filled if the next transport mode is rail
Next discharge location	X	X	X		X			Can be filled if the next transport mode is rail
<b>Remarks</b>								
General remarks from Container Provider	X	X	X	X	X			
General remarks to Transport Agent	X	X*	X					Shared by the TO and TA If they are included both in the Transport Instructions and in the Release/Acceptance Orders, they are added to the Unified Document
<b>For each container</b> (at least one container must be indicated)								
<b>Goods</b>								<b>One is always mandatory when a full container is indicated for release or acceptance</b>
Number of packages	X	X	X	X*	X*			
Type of packages (code and description) (Harmonised) ISO goods code	X	X	X	X*	X*			Validated against the master table
Goods description	X	X	X	X*	X*			Code or description mandatory
Gross weight	X	X	X	X*	X*			Mandatory
Dangerous goods details (UNDG code, IMDG class, packing group, port authorization number)	X	X	X	X*	X*			If any dangerous goods details are included, the UNDG code is mandatory Validated against the UN code master table
Contact name and contact details for dangerous goods	X	X	X	X*	X*			

Details	CC	CP	TO/ TA	RC	AC	TA	CF	Remarks
<b>Container</b>								
Plate number (import)	X	X	X	X	X	X*	X	Mandatory. Maximum length: 11 digits.
Plate number (all movements except import)	X	X	X	X	X	X*	X	Mandatory for transfer/transshipment of full containers and export cancellation. Maximum length: 11 digits.
Unique container reference or identifier (for example, an item or sequence number)	X	X	X	X	X	X	X	Mandatory.
Type (ISO code + ISO description)	X	X	X	X	X			Mandatory. Validated against the ISO code master table
Container state on release (full or empty)	X	X	X	X				Mandatory Consistent with the container state: full at release for import, and in the same condition on release/acceptance for transfer.
Container state on acceptance (full or empty)	X	X	X		X			Mandatory Consistent with the container state; full at acceptance for export, and in the same condition on release/acceptance for transfer.
Full container details (full container load (FCL), less than container load (LCL), full with other equipment or empty)	X	X	X	X*	X*			
Tare weight	X	X	X	X	X			Mandatory
Maximum weight	X	X	X	X	X			
Gross weight	X	X	X	X	X			
Verified gross weight indicator	X	X	X	X	X		X	
Oversize dimensions (front, back, left, right, height)	X	X	X	X*	X*			Cannot be informed for an empty container order
References to related document (document number or Forwarder Reference)	X	X	X					This references will be used to integrate each Release/Acceptance Order of this message to its associated Transport Instructions
<b>Inspections and Positioning Details</b>								
Goods inspection agency/agencies (Customs, Phytosanitary, SOIVRE, Animal Health, Foreign Health, and Border Inspection Post (generic inspection) or types of positioning (scanner, weighing or generic positioning)	X	X	X	X	X			
Inspection or positioning date/time	X	X	X	X	X			
Operation	X	X	X	X	X			Free text to explain the operation requested by the inspection or positioning

Details	CC	CP	TO/ TA	RC	AC	TA	CF	Remarks
<b>Leasing details</b>								Only included in orders where the container is empty
SCAC code of the leasing agency	X	X	X	X	X			
Name of the leasing agency	X	X	X	X	X			
Leasing reference	X	X	X	X	X			
<b>Additional instructions</b>								List of encoded instructions: each one will have a type code and text description
Reinforced container request	X	X	X	X	X			
Shuttle between terminals indicator	X	X	X	X	X			
Container owned by shipper indicator	X	X	X	X	X			
Cleaned of dangerous goods indicator	X	X	X		X			Only included in acceptance orders where the container is empty
Container with dangerous goods residues	X	X	X	X	X			Only included in orders where the container is empty
Cleanliness required	X	X	X	X	X			
Container to return to terminal	X	X	X	X	X			
Faulty container indicator	X	X	X	X	X			
Valid for flexitank	X	X	X	X	X			
Booking number changed	*	X	*	*	*			<b>This instruction is processed by the system, will not be forwarded to any agent</b>
Other additional instructions	X	X	X	X	X			Free text
Terminal Weighing	X	X	X	X	X			Only for acceptance orders of full containers
Cold Treatment	X	X	X	X	X			Not included for acceptance orders of empty containers
Smart Container	X	X	X	X	X			Included only for release orders of empty containers.
<b>Reefer container details</b>								
Connect reefer: in terminal and to truck	X	X	X	X*	X			Mandatory for reefer containers If these values indicate NO, the rest of the details should not be indicated Will only be sent to the RC or AC if the container is <b>full on release/acceptance</b>
Temperature settings and units (Celsius or Fahrenheit)	X	X	X	X*	X			Mandatory if the container must be connected
Vent settings (closed or open)	X	X	X	X*	X			
Air flow settings and units (Cubic meters or cubic feet)	X	X	X	X*	X			
Humidity percentage	X	X	X	X*	X			



Details	CC	CP	TO/ TA	RC	AC	TA	CF	Remarks
Humidifier request	X	X	X	X*	X			
Generator request	X	X	X	X*	X			
Request for controlled atmosphere and its settings (% of oxygen, nitrogen and CO <sub>2</sub> )	X	X	X	X*	X			
Additional temperature control instructions	X	X	X	X*	X			
<b>Container release details</b>								
Release Company	X	X	X	X				Mandatory if the Release Order is sent
Unique release reference	X	X	X	X		X	X	Should be unique for all the active release <b>and acceptance</b> orders from this Container Provider
Document number and reference to the associated Acceptance Order	X	X	X	X				Cross-reference to the acceptance order associated to this release order
Document number generated by the system	X	X	X	X		X	X	Must be sent empty in an original. The document numbers for the Transport Instructions, Release Order and Acceptance Order will be different.
Code and name of the container line at the terminal/depot (currently known as maritime line)	X	X	X	X				Mandatory for terminals. Validated against the master table
Assigned container list reference	X	X	X	X				This field is preferred by some Depots and Terminals to carry out bulk transfer of empty containers.
<del>Release valid from date</del>	<del>X</del>	<del>X</del>	<del>X</del>	<del>X</del>				<del>The release valid from date should not be later than the acceptance valid from date.</del>
Release expiration date	X	X	X	X				Release expiration date is set by the system when the document is sent based in release date proposed by the contracting party.
Release date proposed by the contracting party	X	X	X	X				The proposed release date should not be later than the proposed acceptance date.
Remarks to release company		X	X	X				
Bar code	X	X	X	X				Different from release and acceptance. This should be a 20-digit numeric code, starting with the 4 digits associated with each sender company.
<b>Road transport details</b>								
Truck plate number on release	X	X	X	X		X	X	
Trailer/s plate number/s on release	X	X	X	X		X	X	
Driver name, national identity number and phone number	X	X	X	X		X		

Details	CC	CP	TO/ TA	RC	AC	TA	CF	Remarks
<b>Container details</b>								
Seal numbers on release, and their provider (possible providers: Inspection, Ocean Carrier, Shipper, Terminal)	X	X	X	X		X	X	
<b>Container acceptance details</b>								
Acceptance Company	X	X	X	X				Mandatory if the Acceptance Order is sent
Unique acceptance reference	X	X	X		X	X	X	Should be unique for all the active acceptance <b>and release</b> orders from this Container Provider
Document number and reference to the associated Release Order	X	X	X	X				Cross-reference to the release order associated to this acceptance order
Document number generated by the system	X	X	X		X	X	X	The document numbers for the Transport Instructions, Release Order and Acceptance Order will be different.
Code and name of the container line at the terminal/depot (currently known as maritime line)	X	X	X		X			Mandatory for terminals. Validated against the master table
Assigned container list reference	X	X	X		X			This field is preferred by some Depots and Terminals to carry out bulk transfer of empty containers.
Acceptance valid from date	X	X	X	X				
Acceptance expiration date	X	X	X		X			Acceptance expiration date is set by the system when the document is sent based in acceptance date proposed by the contracting party.
Acceptance date proposed by the contracting party	X	X	X		X			
Remarks to acceptance company		X	X		X			
Bar code	X	X	X		X			Different from release and acceptance. This should be a 20-digit numeric code, starting with the 4 digits associated with each sender company.
<b>Road transport details</b>								
Truck plate number on acceptance	X	X	X		X	X	X	
Trailer/s plate number/s on acceptance	X	X	X		X	X	X	
Driver name, national identity number and phone number	X	X	X		X	X		
<b>Container details</b>								
Seal numbers on acceptance, and their provider (possible providers: Inspection, Ocean Carrier, Shipper, Terminal)	X	X	X		X	X	X	

### 3.1 // Encoded data

Some of the aforementioned details must be encoded, and are contrasted against valid code tables which are used by valenciaportpcs.net. The valid codes for each piece of information can be consulted via the Web Service, either to directly integrate the user's application with valenciaportpcs.net, or to obtain the most recent valid code lists for a specific piece of information.

This encoded data and the URL which contains the Web Method to consult these codes are listed below. The Web Service for all these queries is [www.valenciaportpcs.net/services/lookup.asmx](http://www.valenciaportpcs.net/services/lookup.asmx), i.e. each specific method always has this common root. To activate this, add "?op=" to the chain root, followed by the specific Web Method (for example, [www.valenciaportpcs.net/services/lookup.asmx?op=SearchLocations](http://www.valenciaportpcs.net/services/lookup.asmx?op=SearchLocations)). To avoid confusion, this table only features the Web Method names.

Information	URL
	<a href="http://www.valenciaportpcs.net/services/lookup.asmx?op=">www.valenciaportpcs.net/services/lookup.asmx?op=</a>
Port code	SearchLocations
Involved party code	SearchOrganizationsWithTicket
ISO goods code	SearchTARICGoodsCodes
UN dangerous goods code	SearchImdg
Container type	SearchIsoContainerTypes
Maritime line code	SearchML_MaritimeLines
Package type	SearchPackageTypes
Loading vessel berth request number	Go to Berth Request Queries at <a href="http://www.valenciaportpcs.net">www.valenciaportpcs.net</a>
Terminal code	SearchTerminalsAndLocations

More information can be obtained about each one (on-line documentation, returned data structure, etc.) by consulting the methods directly using a web browser.

In order to access the web methods which request a connection ticket the user must have previously activated the valenciaportpcs.net Login service ([www.valenciaportpcs.net/services/login.asmx?op=Login](http://www.valenciaportpcs.net/services/login.asmx?op=Login)), as a system user, and have obtained the ticket from this service to be able to subsequently make these queries.

### 3.2 // Differences with the message IFTMIN (Complete UTD)

In the first phase of the valenciaportpcs.net new Inland Transport service, the Shipping Agents still had the responsibility of sending complete documents with the Transport Instructions as well as the Release and Acceptance Orders, no matter if the service was carrier haulage or merchant haulage. This had been the procedure since the beginning of this service in valenciaportpcs.net, and even in the previous platform (the SIC).

With this second phase of the new version of the Inland Transport service, the Shipping Agents will be relieved from such responsibility which is not in line with the business **when the transport is merchant haulage**, and in this scenario they will only have to send the Release/Acceptance Orders. Therefore, the messages sent by Carriers or their Shipping Agents will have to be updated to the following:

- IFTMINs (Complete UTD message) for **carrier haulage** – With this message, both Transport Instructions and Release/Acceptance Orders can be sent at the same time, like currently.
- COPARNs (Release/Acceptance Orders) for **merchant haulage** – In this scenario, there is a choice of sending each Release/Acceptance Order independently (message **ReleaseOrder** and **AcceptanceOrder**), or to send a group message with several Release/Acceptance Orders (using the new message described in this document, **ReleaseAcceptanceOrders**).

If this new message is chosen, the current messaging integration with valenciaportpcs.net will have to be very slightly modified, since this new message is identical to the IFTMIN message with the following exceptions:

- Type of message (0010 UNH-0113, *Message type sub-function identification*), data field not sent in this message. Instead, the type of message is specified in 0020 BGM-1001, *Document name code*.
- **Removed** elements that exist in the IFTMIN message but that cannot be sent in this type of message or it will be rejected (the references correspond to the location of each data field in the message IFTMIN):
  - Ocean Carrier (SG8: 0480 TDT-C040, *Carrier*)
  - Closing Time valid date (0050 DTM)
  - References to other documents (SG3: 0200 RFF-C506.1153, code "ACE")
  - Parties "Contracting Party", "Shipper/Exporter" and "Importer" (SG12: 0600 NAD-3035, codes "HI", "EX" e "IM")
  - Contracting Party, Transport Operator and System remarks (0090 FTX-4451, codes "FCT", "FTO" y "SYS")
  - Customs status (SG38: 1770 FTX-4451, code "CCI")
  - The following additional instructions should not be included:
    - SPRAYED: fumigated container
    - SHORT\_PLATFORM
    - PNEUMATIC\_PLATFORM
    - LOWERING\_PLATFORM
    - PUNCTUALITY: punctuality required
    - LABOR\_CONTRACTED
    - WEIGHING: weighing and taring
    - DUMP\_TRUCK: dump truck required
  - Loading/Unloading places (SG38: 1880 NAD-3035, code "EC" and related data in following segments)
  - Release/Acceptance Company reference to the Release/Acceptance Order, and locators (SG38: 1780 RFF-C506.1153, codes "ATY", "ATX", "ILR", "ILA")
  - Closing Time valid date for Release and Acceptance Order, release/acceptance date estimated by Transport Operator, actual release/acceptance date (SG38:SG40 1890 DTM-C507.2005, codes 180, 395, 7)
  - Release Company remarks and Acceptance Company remarks (SG38: 1770 FTX-C107.4441, codes "FROM\_RELEASE\_C" y "FROM\_ACCEPTANCE\_C")
  - Inland transport voyage number (SG38: 1780 RFF-C506.1153, codes "VNR" y "VNA")

## 4 // Special considerations: format and content

### 4.1 // Status indicators

The status indicators ("M" and "C") form part of the UN/EDIFACT standard and indicate a minimum requirement to fulfil the needs of the message structure. These indicators are:

Value	Description
M	Mandatory
	This entity must appear in all messages.
C	Conditional
	This entity is only necessary if a particular event or situation occurs. It usually depends on specific business situations and is used by agreement between the parties to the transaction.

### 4.2 // Usage indicators

Usage indicators depend on the specific implementation of the message and therefore specify the conditional status indicators for this implementation. These indicators specify the agreed use for each element or entity, and thus are the indicators used in this document's tables. These indicators are:

Value	Description
M	Mandatory
	Indicates that the entity is mandatory according to the EDIFACT standard.
R	Required
	Indicates that the entity is mandatory in this implementation of the message.
D	Dependent
	Indicates that the use of the entity depends on a particular condition which is clearly defined in the implementation guide.
O	Optional
	Indicates that this entity is optional.
X	Not used
	Indicates that this entity is not to be used in this message implementation of the message. These elements are <del>crossed-out</del> in this guide.

### 4.3 // Other remarks

- The data tables for each segment also feature the **intermediate** data which are not used in this implementation of the message. However, all the data at the end of each segment which are not used have not been included for readability.
- The first column of the data tables for each segment shows the standard status indicators, and the penultimate column shows the use indicators (i.e. the specific use of each piece of data in this implementation of the guide).
- As in any specific implementation of a guide based on the EDI standard, not all the data that valenciaportpcs.net has used for this document interchange appear in the standard. Thus, some of the codes used in this guide do not appear in the standard.

## 5 // COPARN message structure

The COPARN message structure according to the UN/EDIFACT D2010B directory (on which these guidelines are based) is as follows:

Pos	Tag	Name	S	R
0010	<a href="#">UNH</a>	Message header	M	1
0020	<a href="#">BGM</a>	Beginning of message	M	1
0030	<a href="#">TMD</a>	Transport movement details	C	1
0040	<a href="#">DTM</a>	Date/time/period	C	9
0050	<a href="#">TSR</a>	Transport service requirements	C	9
0060	<a href="#">FTX</a>	Free text	C	99
0070	<a href="#">LOC</a>	Place/location identification	C	9
0080		----- Segment group 1 -----	C	9-----+
0090	<a href="#">RFF</a>	Reference	M	1
0100	<a href="#">DTM</a>	Date/time/period	C	9-----+
0110		----- Segment group 2 -----	C	9-----+
0120	<a href="#">TDT</a>	Transport information	M	1
0130	<a href="#">DTM</a>	Date/time/period	C	9
0140	<a href="#">RFF</a>	Reference	C	9
0150		----- Segment group 3 -----	C	9-----+
0160	<a href="#">LOC</a>	Place/location identification	M	1
0170	<a href="#">DTM</a>	Date/time/period	C	9-----++
0180		----- Segment group 4 -----	M	9-----+
0190	<a href="#">NAD</a>	Name and address	M	1
0200		----- Segment group 5 -----	C	9-----+
0210	<a href="#">CTA</a>	Contact information	M	1
0220	<a href="#">COM</a>	Communication contact	C	9-----+
0230	<a href="#">RFF</a>	Reference	C	9
0240	<a href="#">DTM</a>	Date/time/period	C	9-----+
0250		----- Segment group 6 -----	C	999-----+
0260	<a href="#">GID</a>	Goods item details	M	1
0270	<a href="#">HAN</a>	Handling instructions	C	9
0280	<a href="#">FTX</a>	Free text	C	9
0290	<a href="#">RFF</a>	Reference	C	9
0300	<a href="#">PIA</a>	Additional product id	C	9
0310		----- Segment group 7 -----	C	99-----+
0320	<a href="#">NAD</a>	Name and address	M	1
0330	<a href="#">DTM</a>	Date/time/period	C	9
0340	<a href="#">RFF</a>	Reference	C	9-----+
0350	<a href="#">MEA</a>	Measurements	C	9
0360	<a href="#">DIM</a>	Dimensions	C	9
0370		----- Segment group 8 -----	C	9-----+
0380	<a href="#">DOC</a>	Document/message details	M	1
0390	<a href="#">DTM</a>	Date/time/period	C	9
0400	<a href="#">LOC</a>	Place/location identification	C	9-----+
0410		----- Segment group 9 -----	C	999-----+
0420	<a href="#">SGP</a>	Split goods placement	M	1
0430	<a href="#">MEA</a>	Measurements	C	9-----+
0440		----- Segment group 10 -----	C	99-----+
0450	<a href="#">DGS</a>	Dangerous goods	M	1
0460	<a href="#">FTX</a>	Free text	C	9
0470	<a href="#">MEA</a>	Measurements	C	9

<u>0480</u>		----- Segment group 11 -----	C	9-----+
<u>0490</u>	<u>CTA</u>	Contact information	M	1
<u>0500</u>	<u>COM</u>	Communication contact	C	9-----+
<u>0510</u>		----- Segment group 12 -----	C	9-----+
<u>0520</u>	<u>TMP</u>	Temperature	M	1
<u>0530</u>	<u>RNG</u>	Range details	C	1-----+
<u>0540</u>		----- Segment group 13 -----	M	9999-----+
<u>0550</u>	<u>EQD</u>	Equipment details	M	1
<u>0560</u>	<u>RFF</u>	Reference	C	9
<u>0570</u>	<u>EQN</u>	Number of units	C	1
<u>0580</u>	<u>TMD</u>	Transport movement details	C	9
<u>0590</u>	<u>DTM</u>	Date/time/period	C	9
<u>0600</u>	<u>TSR</u>	Transport service requirements	C	9
<u>0610</u>	<u>LOC</u>	Place/location identification	C	9
<u>0620</u>	<u>MEA</u>	Measurements	C	9
<u>0630</u>	<u>DIM</u>	Dimensions	C	9
<u>0640</u>		----- Segment group 14 -----	C	9-----+
<u>0650</u>	<u>TMP</u>	Temperature	M	1
<u>0660</u>	<u>RNG</u>	Range details	C	1-----+
<u>0670</u>	<u>SEL</u>	Seal number	C	9
<u>0680</u>	<u>FTX</u>	Free text	C	9
<u>0690</u>	<u>PCD</u>	Percentage details	C	9
<u>0700</u>		----- Segment group 15 -----	C	99-----+
<u>0710</u>	<u>DGS</u>	Dangerous goods	M	1
<u>0720</u>	<u>FTX</u>	Free text	C	9
<u>0730</u>	<u>MEA</u>	Measurements	C	9
<u>0740</u>		----- Segment group 16 -----	C	9-----+
<u>0750</u>	<u>CTA</u>	Contact information	M	1
<u>0760</u>	<u>COM</u>	Communication contact	C	9-----+
<u>0770</u>	<u>MOA</u>	Monetary amount	C	9
<u>0780</u>	<u>GOR</u>	Governmental requirements	C	9
<u>0790</u>	<u>EQA</u>	Attached equipment	C	1
<u>0800</u>	<u>COD</u>	Component details	C	1
<u>0810</u>	<u>HAN</u>	Handling instructions	C	9
<u>0820</u>		----- Segment group 17 -----	C	9-----+
<u>0830</u>	<u>DAM</u>	Damage	M	1
<u>0840</u>	<u>COD</u>	Component details	C	1-----+
<u>0850</u>		----- Segment group 18 -----	C	9-----+
<u>0860</u>	<u>TDT</u>	Transport information	M	1
<u>0870</u>	<u>DTM</u>	Date/time/period	C	9
<u>0880</u>	<u>RFF</u>	Reference	C	9
<u>0890</u>		----- Segment group 19 -----	C	9-----+
<u>0900</u>	<u>LOC</u>	Place/location identification	M	1
<u>0910</u>	<u>DTM</u>	Date/time/period	C	9-----+
<u>0920</u>		----- Segment group 20 -----	C	9-----+
<u>0930</u>	<u>NAD</u>	Name and address	M	1
<u>0940</u>	<u>DTM</u>	Date/time/period	C	1
<u>0950</u>	<u>CTA</u>	Contact information	C	1
<u>0960</u>	<u>COM</u>	Communication contact	C	1
<u>0970</u>	<u>RFF</u>	Reference	C	9-----+
<u>0980</u>	<u>CNT</u>	Control total	C	1
<u>0990</u>	<u>UNT</u>	Message trailer	M	1

## 5.1 // Summary table

The following table only shows the COPARN standard segments used in this implementation of the guide. The maximum repetitions and mandatory nature shown in this summary table specifies whether there are any differences between this particular implementation and the standard.

0005	UNB	Interchange Header	M	1	
0010	UNH	Message Header	M	1	
0020	BGM	Beginning of Message	M	1	
0030	TMD	Transport Movement Details	€ M	1	
0060	FTX	Free Text	C	<del>99</del> Unlimited	
0080		Segment Group 1: RFF- <del>DTM</del>	C		9
0090	RFF	Reference	M	1	
0110		Segment Group 2: TDT- <del>DTM</del> -RFF-SG03	C		9
0120	TDT	Transport Information	M	1	
0140	RFF	Reference	C	9	
0150		Segment Group 3: LOC- <del>DTM</del>	C		9
0160	LOC	Place/Location Identification	M	1	
0180		Segment Group 4: NAD-SG5-RFF- <del>DTM</del> - LOC	M		9
0190	NAD	Name and Address	M	1	
0200		Segment Group 5: CTA-COM	C		<del>9</del> Unlimited
0210	CTA	Contact Information	M	1	
0220	COM	Communication Contact	C	9	
0230	RFF	Reference	C	9	
0240	LOC	Place/Location Identification	C	<del>9</del> 1	
0250		Segment Group 6: GID-HAN-FTX-RFF-PIA-SG7- <del>SG8</del> -SG9-SG10	C		999
0260	GID	Goods Item Details	M	1	
0280	FTX	Free Text	C	<del>9</del> 1	
0300	PIA	Additional Product Id	C	<del>9</del> 1	
0310		Segment Group 7: NAD- <del>DTM</del> -RFF-MEA-DIM	C		<del>99</del> 1
0350	MEA	Measurements	€ M	<del>9</del> 1	
0410		Segment Group 9: SGP-MEA	C		999
0420	SGP	Split Goods Placement	M	1	
0430	MEA	Measurements	M	1	
0440		Segment Group 10: DGS-FTX- <del>MEA</del> -SG11- <del>SG12</del>	C		<del>99</del> 1
0450	DGS	Dangerous Goods	M	1	
0460	FTX	Free Text	C	<del>9</del> 1	
0480		Segment Group 11: CTA-COM	C		<del>9</del> Unlimited
0490	CTA	Contact Information	M	1	
0500	COM	Communication Contact	C	9	
0540		Segment Group 13: EQD-RFF-EQN-TMD- <del>DTM</del> -TSR-LOC-MEA-DIM-SG14-SEL-FTX-HAN- <del>SG15</del> - <del>SG16</del> - <del>SG17</del> - <del>SG18</del> - <del>SG19</del> -SG20	€ M		<del>9999</del> Unlimited
0550	EQD	Equipment Details	M	1	
0560	RFF	Reference	C	<del>9</del> 99	
0570	EQN	Number of Units	€ M	1	
0620	MEA	Measurements	C	9	
0630	DIM	Dimensions	C	9	
0640		Segment Group 14: TMP- <del>RNG</del>	C		<del>9</del> 1
0650	TMP	Temperature	M	1	
0670	SEL	Seal Number	C	<del>9</del> Unlimited	
0680	FTX	Free Text	C	<del>9</del> Unlimited	



0690	HAN	Handling Instructions	C	± Unlimited	
0920		Segment Group 20: NAD-DTM-CTA-COM-RFF	C		9
0930	NAD	Name and Address	M	1	
0940	DTM	Date/Time/Period	C	± 5	
0950	CTA	Contact Information	C	1	
0960	COM	Communication Contact	C	± 9	
0970	RFF	Reference	C	9	
0980	FTX	Free Text	C	9	
0990	LOC	Place/Location Identification	C	9 1	
1000	UNT	Message Trailer	M	1	
1010	UNZ	Interchange Trailer	M	1	

## 6 // COPARN message elements

### 6.1 // UNB – Interchange Header

**Segment:** **UNB** Interchange Header  
**Position:** 0005  
**Group:**  
**Level:** 0  
**Usage:** Mandatory  
**Max Use:** 1

#### 6.1.1. Purpose

Initial group of elements used to identify and specify the message sender, recipient and date sent.

#### 6.1.2. Comments

- The message sender (*Sender identification*) must coincide with the *Container Provider* party defined in the SG4 – NAD (Name and Address) element group.
- The *Sender identification* element must be the sending organisation's valenciaportpcs.net code, or Company VAT number (or National Identity Number). If the Company VAT number is used and there is more than one company registered with valenciaportpcs.net with the same VAT number, the “extended” VAT number provided by valenciaportpcs.net should be used to avoid confusion.

#### 6.1.3. Elements

	<u>Data Element</u>	<u>Component Element</u>	<u>Name</u>	<u>Attributes</u>	
M	S001		SYNTAX IDENTIFIER	O	
M		0001	Syntax identifier	O	an..6
			UNOA	<i>Indicating the use of level 'A' character set.</i>	
M		0002	Syntax version number	O	n1
			2	<i>Indicating the use of level 'A' character set.</i>	
M	S002		INTERCHANGE SENDER	M	
M		0004	Sender identification	M	an..35
				<i>Name code of the message sender.</i>	
				Code or VAT number which identifies the message sender	
X		0007	Identification Code Qualifier	E	an..4
X		0008	Interchange sender internal identification	E	an..14
M	S003		INTERCHANGE RECIPIENT	M	
M		0010	Recipient identification	M	an..35
				<i>Name code of the message recipient.</i>	
				Code or VAT number which identifies the message recipient	
				Accepted values which can be sent to valenciaportpcs.net:	
				<ul style="list-style-type: none"> <li>VALENCIAPORT</li> </ul>	
X		0007	Identification Code Qualifier	E	an..4
X		0014	Interchange Recipient Internal Identification	E	an..14
M	S004		DATE/TIME OF PREPARATION	M	
M		0017	Date	M	n6
				Date the message is sent, in YYMMDD format	
M		0019	Time	M	n4
				Time the message is sent, in HHMM format	
M	S005	0020	Interchange control reference	M	an..14

## 6.1.4. EDI example

UNB++USER+VALENCIAPORT+110101:1708+Interchange ref'

## 6.2 // UNH – Message Header

Segment: **UNH** Message Header  
 Position: 0010  
 Group:  
 Level: 0  
 Usage: Mandatory  
 Max Use: 1

### 6.2.1. Purpose

Group of elements used to identify a message and indicate its type.

### 6.2.2. Comments

- Each message sent by the user to valenciaportpcs.net must have a unique message number.

### 6.2.3. Elements

	Data Element	Component Element	Name	Attributes
M	0062		MESSAGE REFERENCE NUMBER	M   an..14
			Unique reference assigned by the sender to identify the message.	
M	S009		MESSAGE IDENTIFIER	M
			Element group to identify the type, version, etc. of the interchanged message.	
M		0065	Message type identifier	M   an..6
			COPARN	Container announcement message.
M		0052	Message type version number	O   an..3
			D	Draft version/UN/EDIFACT Directory.
M		0054	Message type release number	M   an..3
			10B	Release 2010 – B
M		0051	Controlling agency	O   an..2
			UN	UN/CEFACT
R		0057	Association assigned code	M   an..6
			This code indicates the agency maintaining the Message Implementation Guideline and the version of that Guideline which has been used. Any agency may place a code in this element (General Recommendation D4/G5 refers).	
			VP-TT	Valenciaport, Inland Transport service (TT)

### 6.2.4. EDI example

UNH+USER0123456789+COPARN:D:10B:UN:VP-TT '

### 6.3 // BGM – Beginning of Message

Segment: **BGM** Beginning of Message  
 Position: 0020  
 Group:  
 Level: 0  
 Usage: Mandatory  
 Max Use: 1

#### 6.3.1. Purpose

Group of elements used to identify the document that contains this message and the message function.

#### 6.3.2. Comments

- The document number (*Document number*) is automatically generated by valenciaportpcs.net.
- The document number format generated by valenciaportpcs.net is as follows: **CCCCYYMMDDnnnnnnnn**, where **CCCC** is the PCS code of the document sender (the Contracting Company), **YYMMDD** is the date the document was created (year, month, day), and the rest (**nnnnnnnn**) is a sequential number which is reinitiated at the start of each year.
- When the message function is a replacement or cancellation, the message sender must identify the message it wishes to replace/cancel with the document number (*Document number*), or with the Container Provider reference. In a replacement, the last reference cannot be modified.
- You cannot replace a canceled or completed document (that is, the release or acceptance has been confirmed).

#### 6.3.3. Elements

	Data Element	Component Element	Name	Attributes	
R	C002		DOCUMENT/MESSAGE NAME	M	
R		1001	Document name code	M	an..3
			Type of message Accepted values:		
			<ul style="list-style-type: none"> <li>• <b>264:</b> Release/Acceptance Orders (<i>transport equipment movement instruction</i>)</li> </ul>		
X		1131	Code list identification code	E	an..3
X		3055	Code list responsible agency code	E	an..3
Q		1000	Document name	E	an..35
R	C106		DOCUMENT/MESSAGE IDENTIFICATION	C	
			Element group to identify the document by its number and version.		
R		1004	Document number	C	an..35
			Reference number assigned by the sender to the document.		
			Document number		
X		1056	Version	O	an..9
			1.0		
X		1060	Revision number	E	an..6
R	1225		MESSAGE FUNCTION CODE	M	an..3
			Message function Accepted values:		
			<ul style="list-style-type: none"> <li>• <b>9:</b> original</li> </ul>		

	<ul style="list-style-type: none"><li>• <b>5:</b> replacement</li><li>• <b>1:</b> cancellation</li></ul>
--	--

### 6.3.4. EDI example

BGM+264+:1.0+9'

## 6.4 // TMD Transport Movement Details

**Segment:** **TMD** Transport Movement Details  
**Position:** 0030  
**Group:**  
**Level:** 0  
**Usage:** Conditional Mandatory  
**Max Use:** 1

### 6.4.1. Purpose

Group of elements used to specify transport details, and especially the contracting conditions.

### 6.4.2. Elements

	<u>Data Element</u>	<u>Component Element</u>	<u>Name</u>	<u>Attributes</u>	
⊖	C219		MOVEMENT TYPE	€	
⊖		8335	Movement type description code	€	an..3
X		8334	Movement type description	€	an..35
X	8332		EQUIPMENT PLAN DESCRIPTION	€	an..26
<b>R</b>	<b>8341</b>		<b>HAULAGE ARRANGEMENTS CODE</b>	<b>M</b>	<b>an..3</b>
			<i>Contractual conditions of the transport</i>		
			Code which identifies the type of transport. Accepted values:		
					<ul style="list-style-type: none"> <li>• 1: Carrier haulage</li> <li>• 2: Merchant haulage</li> </ul>

### 6.4.3. EDI example

TMD+++2'

## 6.5 // FTX – Free Text

**Segment:** **FTX** Free Text  
**Position:** 0060  
**Group:**  
**Level:** 1  
**Usage:** Conditional (Optional)  
**Max Use:** 99 Unlimited

### 6.5.1. Purpose

Group of elements used to indicate remarks and coded instructions.

### 6.5.2. Comments

- Each remark must specify its type and the remark text.

### 6.5.3. Elements

<u>Data Element</u>	<u>Component Element</u>	<u>Name</u>	<u>Attributes</u>	
M	4451	TEXT SUBJECT CODE QUALIFIER	M	an..3
		<i>Code to specify the purpose of the text.</i>		
		Code which identifies the type of remarks Accepted values:		
		<ul style="list-style-type: none"> <li>• <b>FCP:</b> (From Container Provider). This type of remark is sent to all agents included in the document.</li> <li>• <b>TTO:</b> To Transport Operator and Road Carrier. This type of remark is sent only to the Transport Operator and subcontracted Transport Agent, as well as to the Logistics Operator when transport is Merchant Haulage.</li> </ul>		
X	4453	FREE TEXT FUNCTION CODE	C	an..3
	<del>C107</del>	<del>TEXT REFERENCE</del>		
M		4441 Free text description code	M	an..17
		1131 Code list identification code	C	an..17
		3055 Code list responsible agency code	C	an..3
O	C108	TEXT LITERAL	M	
		<i>Free text literal.</i>		
M		4440 Free text value	M	an..512 an..350
		Free text to include the remark		

### 6.5.4. EDI example

FTX+FCT++ +Container provider remarks'



## 6.6 // RFF Segment Group 1: Reference

**Group:** **RFF** Segment Group 1: Reference  
**Position:** 0080  
**Group:**  
**Level:** 1  
**Usage:** Conditional (Optional)  
**Max Use:** 9

### 6.6.1. Purpose

Group of elements which contains different references associated with the document. These references are described in their own specific segment (next chapter).

### 6.6.2. Elements

		<b>Data Component</b>			
		<b><u>Element</u></b>	<b><u>Element Name</u></b>	<b><u>Attributes</u></b>	
M	0090	RFF	Reference	M	1
⊖	0100	DTM	Date/Time/Period	⊖	9

## 6.7 // SG1: . . . RFF Reference

**Segment:** **RFF** Reference  
**Position:** 0090 (Trigger Segment)  
**Group:** Segment Group 1 (Reference) Conditional (Optional)  
**Level:** 1  
**Usage:** Mandatory  
**Max Use:** 1

### 6.7.1. Purpose

Elements used to include the different references associated with the document.

### 6.7.2. Comments

- The booking number (code *BN*) is **mandatory** for export movements, although it should be included for all movements.
- The BL number (code *BL*) should also be added in import documents.
- References with the same code cannot be repeated.

### 6.7.3. Elements

	<u>Data Element</u>	<u>Component Element</u>	<u>Name</u>	<u>Attributes</u>
M	C506		REFERENCE	M
			<i>To indicate the references assigned to the document.</i>	
M		1153	Reference function code qualifier	M an..3
			<i>Code to identify the meaning of the reference.</i>	
			Code which identifies the reference type Accepted values:	
			<ul style="list-style-type: none"> <li>• <b>BN:</b> Booking number</li> <li>• <b>BL:</b> BL number</li> <li>• <b>AHY:</b> Forwarder reference number</li> </ul>	
R		1154	Reference identifier	€ M an..35
			<i>Value of the reference.</i>	

### 6.7.4. EDI example

RFF+BN:Booking number'

## 6.8 // TDT Segment Group 2: Details of Transport

**Group:** **TDT** Segment Group 2: Details of Transport  
**Position:** 0110  
**Group:**  
**Level:** 1  
**Usage:** Conditional (Advised)  
**Max Use:** 9

### 6.8.1. Purpose

Group of elements which contains details about the transport, mainly about the shipping before and/or after the inland transport service.

### 6.8.2. Elements

	<u>Data</u>	<u>Component</u>		<u>Attributes</u>		
	<u>Element</u>	<u>Element</u>	<u>Name</u>			
M	0120	TDT	Details of Transport	M	1	
⊖	<del>0130</del>	<del>DTM</del>	<del>Date/Time/Period</del>	⊖	<del>9</del>	
O	0140	RFF	Reference	C	9	
	0150		Segment Group 3: Place/Location Identification	C		99

## 6.9 // SG2: . . . TDT Details of Transport

<b>Segment:</b>	<b>TDT</b> Details of Transport	
<b>Position:</b>	0120 (Trigger Segment)	
<b>Group:</b>	Segment Group 2 (Details of Transport)	Conditional (Advised)
<b>Level:</b>	1	
<b>Usage:</b>	Mandatory	
<b>Max Use:</b>	1	

### 6.9.1. Purpose

Elements used to include details about the transport, mainly about the shipping before and/or after the inland transport service.

### 6.9.2. Comments

- When the *Transport Stage Code Qualifier* value is 1 (inland transport details), this element is only repeated to report that the inland transport is to be carried out by rail (*Mode of Transport = 2*) and that the other details (both in this element and in the subordinate elements) must not be filled in as they only refer to maritime shipping.
- When the Transport Stage Code Qualifier value is 30 (next transport details), this element is only repeated to report that the inland transport next to the main transport is to be carried out by rail (Mode of Transport = 2) or by road (Mode of Transport = 3), and the rest of data should not be filled as long as they only refer shipping details. Only reported for acceptance orders.
- The shipping details previous to the inland transport (discharging vessel) are only interchanged in the Release Order whilst shipping details after inland transport (loading vessel) are only interchanged in the Acceptance Order.

### 6.9.3. Elements

	<u>Data Element</u>	<u>Component Element</u>	<u>Name</u>	<u>Attributes</u>
M	8051		TRANSPORT STAGE CODE QUALIFIER	M   an..3
			<i>Code to specify the transport stage to which the element group refers.</i>	
			Code which identifies which type of transport this data group refers to. Accepted values: <ul style="list-style-type: none"> <li>• 1: Inland transport</li> <li>• 21: Shipping before inland transport (discharging vessel and its itinerary)</li> <li>• 22: Shipping after inland transport (loading vessel and its itinerary)</li> <li>• 30: Inland transport after the main transport</li> </ul>	
O	8028		CONVEYANCE REFERENCE NUMBER	C   an..17
			Voyage number	
R	C220		MODE OF TRANSPORT	C
			<i>Method of transport code or name. Code preferred.</i>	
R		8067	Transport mode name code	C   an..3
			Transport mode Accepted values: <ul style="list-style-type: none"> <li>• 2: Rail transport</li> <li>• 3: Road transport</li> </ul>	
X		8066	Transport mode name	C   an..17
⊖	C001		TRANSPORT MEANS	€
⊖		8179	Transport means description code	€   an..8

⊖		8178	Transport means description	€	an..17
×	C040		CARRIER	€	
×	8101		TRANSIT DIRECTION INDICATOR CODE	€	an..3
×	C401		EXCESS TRANSPORTATION INFORMATION	€	
×		8457	Excess transportation reason code	M	an..3
×		8459	Excess transportation responsibility code	M	an..3
×		7130	Customer authorisation identifier	€	an..17
<b>O</b>	<b>C222</b>		<b>TRANSPORT IDENTIFICATION</b>	<b>C</b>	
			<i>To identify the means of transport.</i>		
<b>O</b>		8213	Transport means identification name identifier	C	an..35 an..9
			Vessel call-sign		
⊖		1131	Code list identification code	€	an..3
⊖		3055	Code list responsible agency code	€	an..3
<b>O</b>		<b>8212</b>	<b>Transport means identification name</b>	<b>C</b>	<b>an..35</b>
			Vessel name		

### 6.9.4. EDI example

TDT+21+573W+++++Call-sign:::Vessel name'

## 6.10 // DTM – Date/Time Period

**Segment:** **DTM** Date/Time/Period  
**Position:** 0130  
**Group:** *Segment Group 2 (Date/Time/Period) Conditional (Optional)*  
**Level:** 2  
**Usage:** Conditional  
**Max Use:** 9

### 6.10.1. Purpose

Elements used to include the proposed date for the next inland transport.

### 6.10.2. Elements

	<u>Data Element</u>	<u>Component Element</u>	<u>Name</u>	<u>Attributes</u>
M	C507		DATE/TIME/PERIOD	C
M		2005	Date or time or period function code qualifier	M an..3
			<i>Function of the date.</i>	
		133	<b>RequestedDepartureDate</b>	
			Value keeping the requested date for the Next transport, which only will be used when in the TDT segment (group2), the next transport mode is by rail (TDT+30++2')	
R		2380	Date or time or period value	M an..35
			<i>Value of the date/time.</i>	
R		2379	Date or time or period format code	C an..3
			<i>Format of the date/time.</i>	
		203	<b>CCYYMMDDHHMM</b>	
			<i>Calendar date: C=Century; Y=Year; M=Month; D=Day, H=Hour, MM=Minute</i>	

### 6.10.3. EDI example

DTM+133:201101010745:203'

## 6.11 // SG2: . . . RFF Reference

<b>Segment:</b>	<b>RFF</b> Reference	
<b>Position:</b>	0140 (Trigger Segment)	
<b>Group:</b>	Segment Group 2 (Details of Transport)	Conditional (Advised)
<b>Level:</b>	2	
<b>Usage:</b>	Conditional	
<b>Max Use:</b>	9	

### 6.11.1. Purpose

To indicate the discharging/loading vessel's berth request number.

### 6.11.2. Comments

- When this reference is indicated in the shipping origin data group, it refers to the discharging vessel's berth request number. When it is indicated in the shipping destination data group, it refers to the loading vessel's berth request number.
- The loading vessel's berth request number must be indicated **if the container is full on acceptance, the Acceptance Company is a terminal (or certain depots which use this information) and the specific Return to Terminal Instruction has not been indicated and is not marked as rail transport.**
- If the acceptance terminal has to position an empty container for loading, the loading vessel's berth request number must be indicated. Otherwise, the terminal will place the container in the empty stockpiles.
- When a berth request code is indicated, this number will be checked to make sure it is a valid number for the PAV, it is associated to the terminal indicated as the Acceptance Company, and to ensure that the vessel has not yet started loading containers.

### 6.11.3. Elements

	<u>Data Element</u>	<u>Component Element</u>	<u>Name</u>	<u>Attributes</u>
M	C506		REFERENCE	M
			<i>To indicate the references assigned to the document.</i>	
M		1153	Reference function code qualifier	M an..3
			<i>Code to identify the meaning of the reference.</i>	
			Code which identifies the reference type Accepted values: <ul style="list-style-type: none"> <li>• <b>ZCN:</b> Berth request number</li> </ul>	
R		1154	Reference identifier	€ M an..35
			<i>Value of the reference.</i>	

### 6.11.4. EDI example

RFF+ZCN:1201012345'

## 6.12 // SG2: . . . LOC Segment Group 3: Place/Location Identification

**Group:** **LOC** Segment Group 3: Place/Location Identification  
**Position:** 0150  
**Group:** Segment Group 2 (Details of Transport) Conditional (Advised)  
**Level:** 2  
**Usage:** Conditional (Optional)  
**Max Use:** 99

### 6.12.1. Purpose

Group of elements which contains details about locations associated with the aforementioned type of transport.

### 6.12.2. Elements

		Data Component			
	<u>Element</u>	<u>Element</u>	<u>Name</u>	<u>Attributes</u>	
M	0160	LOC	Place/Location Identification	M	1
⊖	0170	DTM	Date/Time/Period	⊖	9



## 6.13 // SG2: . . . SG3: . . .LOC Place/Location Identification

<b>Segment:</b>	<b>LOC</b> Place/Location Identification	
<b>Position:</b>	0160 (Trigger Segment)	
<b>Group:</b>	Segment Group 3 (Place/Location Identification)	Conditional
	(Optional)	
<b>Level:</b>	2	
<b>Usage:</b>	Mandatory	
<b>Max Use:</b>	1	

### 6.13.1. Purpose

Elements which contain details about locations (ports) associated with the aforementioned type of transport.

### 6.13.2. Comments

- The port of origin and last loading port should only be indicated when repeating the TDT group associated with the shipping data previous to inland transport (discharging vessel). The next discharge port and final destination port should only be indicated when repeating the TDT group associated with the shipping data after inland transport (loading vessel).
- Port types cannot be repeated. The UNLOCODE or the name of each port must be indicated.
- The UNLOCODE must be valid.

The next discharge port (*Location Function Code Qualifier = 152*) must be indicated **if the container is full on acceptance, the acceptance company is a Terminal (or certain depots which use this information) and the specific Return to Terminal Instruction has not been indicated and is not marked as rail transport.**

### 6.13.3. Elements

<u>Data Element</u>	<u>Component Element</u>	<u>Name</u>	<u>Attributes</u>
M	3227	LOCATION FUNCTION CODE QUALIFIER	M   an..3
		<i>Code to identify the function of the location.</i>	
		Code which identifies the port types. Accepted values: When in the TDT segment (group 2) , the next transport mode is by rail (TDT+30++2'): <ul style="list-style-type: none"> <li>• 11: Next discharge location code</li> </ul> Else: <ul style="list-style-type: none"> <li>• 65: Final destination port</li> <li>• 76: Port of origin</li> <li>• 152: Next discharge port</li> <li>• 277: Last loading port</li> </ul>	
O	C517	LOCATION IDENTIFICATION	€ M
		<i>Identification of the location.</i>	
O		3225 Location name code	C   an..35 an..25
		<i>UN/LOCODE code of the name of the location.</i>	
		<i>NextDischargeLocation</i> <i>ADIF code of the discharge terminal, which should only be used when the next discharge location code is 11</i>	
⊖		1131 Code list identification code	€   an..3
⊖		3055 Code list responsible agency code	€   an..3
O		3224 Location name	C   an..256

					an..70
<i>Name of the location.</i>					

### 6.13.4. EDI example

```

LOC+76+ESVLC:::VALENCIA'
LOC+11+65012'
    
```

## 6.14 // NAD Segment Group 4: Name and Address

**Group:** **NAD** Segment Group 4: Name and Address  
**Position:** 0180  
**Group:**  
**Level:** 1  
**Usage:** Mandatory  
**Max Use:** 9

### 6.14.1. Purpose

Group of elements which contains the agents or parties involved in the document.

### 6.14.1. Elements

		<b>Data Component</b>		<b>Attributes</b>		
	<b>Element</b>	<b>Element</b>	<b>Name</b>			
M	0190	NAD	Name and Address	M	1	
	0200		Segment Group 5: Contact Information	C	9	
C	0230	RFF	Reference	C	9	

## 6.15 // SG4: . . . NAD Name and Address

<b>Segment:</b>	<b>NAD</b> Name and Address	
<b>Position:</b>	0190 (Trigger Segment)	
<b>Group:</b>	Segment Group 4 (Name and Address)	Mandatory
<b>Level:</b>	1	
<b>Usage:</b>	Mandatory	
<b>Max Use:</b>	1	

### 6.15.1. Purpose

Element which contains the details of one of the agents or parties involved in the document, including their contact details.

### 6.15.2. Comments

- If the valenciaportpcs.net code for an involved party (*Party Identifier*) is indicated, it must be a valid code.
- At least one of the following three fields must be included for each party: the valenciaportpcs.net code (*Party Identifier*), the name (*Name*) or the National Identity Number (*indicated in the reference subsegment*).
- The sender of the document must be included and given a code. This means that there must be a Container Provider (*CW* code in the *Party Function Code Qualifier* field) and its valenciaportpcs.net code (*Party Identifier*) or National Identity Number (*indicated in the reference subsegment*) must be indicated.
- If a transport operator is coded, it must be configured as a release/acceptance orders recipient in valenciaportpcs.net. If it isn't, the message will not be rejected, but a remark will be added to the response message indicating that no copy of the document has been sent to that agent.
- The Release Company (*PW* code in the *Party Function Code Qualifier* field) **or** the Acceptance Company (*DP* code in the *Party Function Code Qualifier* field) must also be included. Release and Acceptance Companies can be included in this data group or individually for each container.
  - If a Release/Acceptance Company is included here, valenciaportpcs.net will copy it to all containers where a specific Release/Acceptance Company is not indicated.
  - The Release or Acceptance Order will only be deemed to have been sent when the corresponding company and **its correct code** (PCS code or National Identity Number) have been included. In any other case, the system would not be able to send the release/acceptance instructions to the corresponding company and the order would thus be deemed not to have been sent.
  - The Release or Acceptance Order will be generated only when the corresponding company (and its name, code or National Identity Number), has been included. **If the Release Company is not included the Release Order will not be generated. If the Acceptance Company is not included the Acceptance Order will not be generated.** If **its correct code** (PCS code or National Identity Number) have been included, the order will be sent to the corresponding company; in any other case, the system would not be able to send the release/acceptance instructions to the corresponding company, but it will be sent to other parties according to established message flow.

- To change the Release or Acceptance Company on a replacement, the code or National Identity Number of the new company must be included. Otherwise the previous company will be preserved.
  - The Release Company must be included if any release data has been included, i.e., if any data has been included in the following segments:
    - 0560 RFF having *Reference function code qualifier* = *AAK, AAU, LSR, CVR, TPR* o *TRR*.
    - 0670 SEL having *Seal Type Code* = *REL*
    - 0680 FTX having *Free text description code* = *TO\_RELEASE\_C*
    - 0930 NAD having *Party Function Code Qualifier* = *PWR, PW* o *GAR*
  - The Acceptance Company must be included if any acceptance data has been included, i.e., if any data has been included in the following segments:
    - 0560 RFF having *Reference function code qualifier* = *AAJ, DQ, LSA, CVA, TPA* o *TRA*.
    - 0670 SEL having *Seal Type Code* = *ACC*
    - 0680 FTX having *Free text description code* = *TO\_ACCEPTANCE\_C*
    - 0930 NAD having *Party Function Code Qualifier* = *DPR, DP* o *GAA*
  - If a Release and/or Acceptance Company is coded, it must be configured as a Release/Acceptance Order recipient in valenciaportpcs.net. If it isn't, the message will not be rejected, but a remark will be added to the response message indicating that no copy of the document has been sent to that agent.
  - If it is merchant haulage document, the Logistics Operator (*FW* code in the *Party Function Code Qualifier* field), and its code (PCS code or National Identity Number) must be included, and it cannot coincide with the Container Provider. Besides when it is merchant haulage the Transport Operator cannot be included.
  - When carrier haulage is used, it is advisable to include the name and especially the code or National Identity Number of the Logistics Operator.
  - It is mandatory to include at least one recipient of the Release/Acceptance Order (Release/Acceptance Company, Logistics Operator or Transport Operator) recognised by valenciaportpcs.net (PCS code or National Identity Number)
  - The parties involved cannot be repeated.
  - The reference to the Contracting Party's document must be unique for each document which is active in valenciaportpcs.net.
  - If the function of the message is "Replace", the code of any previously identified parties involved in the transport cannot be modified, with the exception of the release and acceptance companies. Thus, the following agent codes cannot be modified.
    - CW (CONTAINER\_PROVIDER)
    - FB (TRANSPORT\_OPERATOR)
    - FW (LOGISTICS\_OPERATOR)
- If the Release or Acceptance Company are modified in a replacement, valenciaportpcs.net will send a cancellation to the previous company and an original for the new company.
- If it is an import, export, export cancellation or transfer, merchant haulage, the Logistics Operator is not recognised by valenciaportpcs.net and the Transport Operator is not included then it is mandatory to include a contact with an email address in the Logistics Operator party.

### 6.15.3. Elements

	Data Element	Component Element	Name	Attributes	
M	3035		<b>PARTY FUNCTION CODE QUALIFIER</b>	M	an..3
			<i>Code to identify the function carried out by the specified party.</i>		
			Code which identifies the type of agent or involved party. Specifies the role that the company involved plays in contracting road transport. Accepted values: <ul style="list-style-type: none"> <li>• <b>CW:</b> Container Provider (Equipment Owner)</li> <li>• <b>FB:</b> Transport Operator (Freight Transport Company)</li> <li>• <b>PW:</b> Release Company (Dispatch party)</li> <li>• <b>DP:</b> Release Company (Delivery party)</li> <li>• <b>FW:</b> Logistics Operator (Freight Forwarder)</li> </ul>		
X	C082		<b>PARTY IDENTIFICATION DETAILS</b>	C	
			<i>To identify the specified party.</i>		
X		3039	<b>Party identifier</b>	M	an..35
			Code assigned by valenciaportpcs.net to this agent or involved party (maximum size used: an..4)		
X		1131	Code list identification code	C	an..3
X		3055	Code list responsible agency code	C	an..3
X	C058		<b>NAME AND ADDRESS</b>	C	
			<i>Used for unstructured name and address details, if appropriate</i>		
X		3124	Name and address line	M	an..35
			<i>Free text (minimum one line)</i>		
X		3124	Name and address line	C	an..35
X		3124	Name and address line	C	an..35
X		3124	Name and address line	C	an..35
X		3124	Name and address line	C	an..35
R	C080		<b>PARTY NAME</b>	C	
			<i>To specify the name of the party.</i>		
M		3036	<b>Party name line</b>	M	an..35
			Name of the agent or involved party (divided up, if necessary, in the five repetitions of the same element)		
O		3036	<b>Party name line</b>	C	an..35
O		3036	<b>Party name line</b>	C	an..35
O		3036	<b>Party name line</b>	C	an..35
O		3036	<b>Party name line</b>	C	an..35
⊖		3045	Party name format code	C	an..3
X	C059		<b>STREET</b>	C	
			<i>To specify the address or postal code.</i>		
X		3042	<b>Street and number or post office box</b>	M	an..35
			Address of the agent or involved party (street, number, and other details, except the city and postal code, divided up, if necessary, in the four repetitions of the same element)		
X		3042	<b>Street and number or post office box</b>	C	an..35
X		3042	<b>Street and number or post office box</b>	C	an..35
X		3042	<b>Street and number or post office box</b>	C	an..35
X	3164		<b>CITY NAME</b>	C	an..35
			<i>Name of the city.</i>		
X	C819		<b>COUNTRY SUB ENTITY DETAILS</b>	C	
X		3229	Country sub-entity name code	C	an..9
X		1131	Code list identification code	C	an..3
X		3055	Code list responsible agency code	C	an..3
X		3228	Country sub-entity name	C	an..35
X	3251		<b>POSTAL IDENTIFICATION CODE</b>	C	an..17
			<i>Postal/zip code.</i>		

### 6.15.4. EDI example

NAD+CW+USER++Container provider+Container provider's address+City++46000'

## 6.16 // SG4: . . . CTA Segment Group 5: Contact Information

**Segment:** **CTA** Contact Information  
**Position:** 0200  
**Group:** Segment Group 4 (Name and Address) Conditional  
**Level:** 2  
**Usage:** Conditional  
**Max Use:** 9 Unlimited

### 6.16.1. Purpose

Group of elements which contains the contact details of the agent or involved party.

### 6.16.2. Elements

	<b>Data Element</b>	<b>Component Element</b>	<b>Component Name</b>	<b>Attributes</b>	
M	0210	CTA	Contact Information	C	1
C	0220	COM	Communication Contact	C	9



## 6.17 // SG4: . . . SG5: . . . CTA Contact Information

**Segment:** **CTA** Contact Information  
**Position:** 0210 (Trigger Segment)  
**Group:** Segment Group 5 (Contact Information) Mandatory  
**Level:** 2  
**Usage:** Mandatory  
**Max Use:** 1

### 6.17.1. Purpose

Group of elements which contains a contact name for the agent or involved party.

### 6.17.2. Comments

- The contact name must be indicated.
- Contacts with the same name for the contact person cannot be repeated.

### 6.17.3. Elements

<u>Data Element</u>	<u>Component Element</u>	<u>Name</u>	<u>Attributes</u>	
3139		CONTACT FUNCTION CODE	C	an..3
C056		DEPARTMENT OR EMPLOYEE DETAILS	C	
		<i>Code and/or name of a contact such as a department or employee.</i>		
	3413	Department of employee identification	C	an..17
	3412	Department of employee	M	an..256 an..35
		<i>Name of a contact, such as a department or employee.</i>		

### 6.17.4. EDI example

CTA++:Contact name'

## 6.18 // SG4: . . . SG5: . . . COM Communication Contact

**Segment:** **COM** Communication Contact  
**Position:** 0220  
**Group:** Segment Group 5 (Contact Information) Conditional  
**Level:** 2  
**Usage:** Conditional  
**Max Use:** 9

### 6.18.1. Purpose

Element which contains the types of contact details for the contact name.

### 6.18.2. Comments

- Both the type of contact and the contact details must be indicated.
- It is not possible to repeat a contact detail for the same type of contact.

### 6.18.3. Elements

	Data Element	Component Element	Name	Attributes
M	C076		COMMUNICATION CONTACT	C an..3
			<i>Communication number of a department or employee in a specified channel.</i>	
R		3148	Communication number	M an..512 an..70
			Contact name's phone number or e-mail address	
R		3155	Communication number code qualifier	M an..3
			Code which identifies the type of contact details Accepted values: <ul style="list-style-type: none"> <li>• TE: phone number</li> <li>• AL: mobile number</li> <li>• FX: fax</li> <li>• EML: e-mail address</li> </ul>	

### 6.18.4. EDI example

COM+96 123 4567:TE'

## 6.19 // SG4: . . . RFF Reference

**Segment:** **RFF** Reference  
**Position:** 0230 (Trigger Segment)  
**Group:** Segment Group 4 (Name and Address) Mandatory  
**Level:** 2  
**Usage:** Conditional  
**Max Use:** 9

### 6.19.1. Purpose

Element which contains different references associated with the agent or involved party.

### 6.19.2. Elements

	<u>Data Element</u>	<u>Component Element</u>	<u>Name</u>	<u>Attributes</u>
M	C506		REFERENCE	M
			<i>To indicate the references assigned to the document.</i>	
M		1153	Reference function code qualifier	M an..3
			<i>Code to identify the meaning of the reference.</i>	
			Code which identifies the reference type Accepted values: <ul style="list-style-type: none"> <li>• <b>ARA:</b> National Identity Number</li> <li>• <b>ANJ:</b> Transport authorisation number (this only needs to be indicated for the Transport Operator or the Transport Agent)</li> <li>• <b>CAW:</b> Internal document reference of each agent</li> </ul>	
R		1154	Reference identifier	€ M an..35
			<i>Value of the reference.</i>	

### 6.19.3. EDI example

RFF+ARA:B01234567'

## 6.20 // SG4: . . . LOC Place/Location Identification

**Segment:** **LOC** Place/Location Identification  
**Position:** 0240 (Trigger Segment)  
**Group:** Segment Group 4 (Name and Address)  
**Level:** 2  
**Usage:** Conditional  
**Max Use:** 9 1

### 6.20.1. Purpose

This element contains the coded location (UNLOCODE) of the city from the previous party address

### 6.20.2. Comments

- This group of elements does not exist in the EDI standard for the COPARN message, but is included in this guide for specific valenciaportpcs.net business reasons.

### 6.20.3. Elements

	<u>Data Element</u>	<u>Component Element</u>	<u>Name</u>	<u>Attributes</u>	
M	3227		LOCATION FUNCTION CODE QUALIFIER	M	an..3
			<i>Code to identify the function of the location.</i>		
			Code which identifies the city location. Accepted values:		
			<ul style="list-style-type: none"> <li>26: City</li> </ul>		
O	C517		LOCATION IDENTIFICATION	€ M	
			<i>Identification of the location.</i>		
O		3225	Location name code	C	an..25 an..5
			<i>UN/LOCODE code of the name of the location.</i>		

### 6.20.4. EDI example

LOC+26+ESVLC'

## 6.21 // GID Segment Group 6: Goods Item Details

**Group:** **GID** Segment Group 6: Goods Item Details  
**Position:** 0250  
**Group:**  
**Level:** 1  
**Usage:** Conditional (Advised)  
**Max Use:** 999

### 6.21.1. Purpose

Group of elements which contains goods item details.

### 6.21.2. Comments

- When the container is full on release or acceptance, at least one of the goods items in the container must be indicated. However, no goods should be indicated if the container is empty on release and acceptance.
- If the container is empty on release and acceptance, no goods should be informed except if only Dangerous Goods data is indicated (to signal that the empty container contains residues)

### 6.21.3. Elements

	<u>Data Element</u>	<u>Component Element</u>	<u>Name</u>	<u>Attributes</u>		
M	0260	GID	Goods Item Details	M	1	
<del>Q</del>	<del>0270</del>	<del>HAN</del>	<del>Handling Instructions</del>	<del>C</del>	<del>1</del>	
D	0280	FTX	Free Text	C	9	
<del>D</del>	<del>0290</del>	<del>RFF</del>	<del>Reference</del>	<del>C</del>	<del>9</del>	
O	0300	PIA	Additional Product Id	C	9	
	0310		Segment Group 7: Measurements	C		99
			<del>Segment Group 8</del>			
			<del>Segment Group 9</del>			
	0440		Segment Group 10: Dangerous Goods	C		99
	0480		Segment Group 11: Communication Contact	C		9

## 6.22 // SG6: . . . GID Goods Item Details

<b>Segment:</b>	<b>GID</b> Goods Item Details	
<b>Position:</b>	0260 (Trigger Segment)	
<b>Group:</b>	Segment Group 6 (Goods Item Details)	Conditional (Advised)
<b>Level:</b>	1	
<b>Usage:</b>	Mandatory	
<b>Max Use:</b>	1	

### 6.22.1. Purpose

Element which contains details about one of the goods items.

### 6.22.2. Comments

- The sequential goods item number is mandatory and cannot be repeated for different goods items in the same container. If the document contains more than one container, the goods sequence number may be repeated provided that the goods are not included in the same container (the container in which are included is indicated in the SGP segment).
- The package type code (*Package type description code*) must be valid.

### 6.22.3. Elements

	Data Element	Component Element	Name	Attributes	
R	1496		GOODS ITEM NUMBER	€ M	n..5
			<i>This should specify a sequential number to identify the individual goods item.</i>		
R	C213		NUMBER AND TYPE OF PACKAGES	C	
R		7224	Number of packages	C	n..8
D		7065	Package type description code	C	an..17 an..3
			<i>Recommend use of UN/ECE Recommendation 21, Annex V, alphabetic code</i>		
X		1131	Code list identification code	€	an..3
D		3055	Code list responsible agency code	€	an..3
D		7064	Type of packages	C	an..35
			<i>Description of the package type</i>		

### 6.22.4. EDI example

GID+1+100:PX:Pallets'

## 6.23 // SG6: . . . FTX Free Text

<b>Segment:</b>	<b>FTX</b> Free Text	
<b>Position:</b>	0280	
<b>Group:</b>	Segment Group 6 (Goods Item Details)	Conditional (Advised)
<b>Level:</b>	2	
<b>Usage:</b>	Conditional (Dependent)	
<b>Max Use:</b>	9 1	

### 6.23.1. Purpose

Element which contains the goods item description.

### 6.23.2. Comments

- The goods item code or description must be indicated.

### 6.23.3. Elements

	<u>Data Element</u>	<u>Component Element</u>	<u>Name</u>	<u>Attributes</u>
M	4451		TEXT SUBJECT CODE QUALIFIER	M an..3
			<i>Code to specify the purpose of the text.</i>	
		AAA	Goods description	
			Goods item description Plain language description of the nature of a goods item sufficient to identify it for customs, statistical or transport purposes.	
X	4453		TEXT FUNCTION CODE	C an..3
O	C107		TEXT REFERENCE	O
M		4441	Free text description code	M an..17
			<i>Code specifying free form text.</i>	
			Value not used in this repetition of the FTX segment	
		1131	Code list identification code	C an..3
		3055	Code list responsible agency code	C an..3
O	C108		TEXT LITERAL	C M
			<i>Free text literal.</i>	
M		4440	Free text value	M an..512 an..350
			<i>Free text, minimum one line. Description of the goods.</i>	

### 6.23.4. EDI example

FTX+AAA+++Goods description'

## 6.24 // SG6: . . . PIA Additional Product Id

**Segment:** **PIA** Additional Product Id  
**Position:** 0300  
**Group:** Segment Group 6 (Goods Item Details) Conditional (Advised)  
**Level:** 2  
**Usage:** Conditional (Optional)  
**Max Use:** 9 1

### 6.24.1. Purpose

Element which contains the TARIC code (or similar) for the goods item.

### 6.24.2. Comments

- The goods item code or description must be indicated. If the goods code is indicated, it must be a valid code.
- Even though the maximum length of the goods code is 10 digits, currently such code is validated against a master table where all codes are 4 digits long. Therefore, all goods codes must be 4 digits long.

### 6.24.3. Elements

	Data Element	Component Element	Name	Attributes	
%	4347		PRODUCT ID FUNCTION QUALIFIER	M	an..3
M	C212		ITEM NUMBER IDENTIFICATION	M	
			<i>To identify the product. Goods identification for a specified source.</i>		
R		7140	Item number	C	an..35 an..10
			TARIC code (or similar) for the type of goods		

### 6.24.4. EDI example

PIA++6907'



## 6.25 // SG6: . . . MEA Segment Group 7: Measurements

**Group:** **MEA** Segment Group 21: Measurements  
**Position:** 0310  
**Group:** Segment Group 6 (Goods Item Details) Conditional (Advised)  
**Level:** 2  
**Usage:** Conditional  
**Max Use:** 99 1

### 6.25.1. Purpose

Element which contains the gross weight of the goods.

### 6.25.2. Elements

		<b>Data</b>	<b>Component</b>		
		<b>Element</b>	<b>Element</b>	<b>Name</b>	<b>Attributes</b>
M	0350	MEA	Measurements	M	1

## 6.26 // SG6: . . . SG7: . . . MEA Measurements

**Segment:** **MEA** Measurements  
**Position:** 0350 (Trigger Segment)  
**Group:** Segment Group 7 (Measurements) Conditional (Dependent)  
**Level:** 2  
**Usage:** Conditional Mandatory  
**Max Use:** 9 1

### 6.26.1. Purpose

Element which contains the gross weight of the goods.

### 6.26.2. Comments

- The gross weight of the goods must be indicated.

### 6.26.3. Elements

	<u>Data Element</u>	<u>Component Element</u>	<u>Name</u>	<u>Attributes</u>	
M	6311		MEASUREMENT ATTRIBUTE CODE	M	an..3
R	C502		MEASUREMENT DETAILS	€ M	
R		6313	Measured attribute code	€ M	an..3
			General recommendation D4/G42 refers. Code to specify the measured attribute.		
			<b>G</b>		Gross Weight
X		6321	Measurement significance code	€	an..3
€		6155	Non-discrete measurement name code	€	an..17
X		6154	Non-discrete measurement name	€	an..70
R	C174		VALUE/RANGE	€ M	
			To specify the measurement value.		
M		6411	Measurement unit code	M	an..3
			To specify the unit of measurement.		
			<b>KGM</b>		Kilograms
R		6314	Measurement value	€ M	an..18
			Gross weight of the goods		

### 6.26.4. EDI example

MEA++G+KGM:21000'

## 6.27 // SG6: . . . SGP Segment Group 9: Split Goods Placement

**Group:** **SGP** Segment Group 9: Split Goods Placement  
**Position:** 0410  
**Group:** Segment Group 6 (Goods Item Details) Conditional (Advised)  
**Level:** 2  
**Usage:** Conditional  
**Max Use:** 999

### 6.27.1. Purpose

Group of elements which contains the distribution of goods items in different containers.

### 6.27.2. Comments

- If the document contains more than one container, the distribution of each goods item in the different containers included in the document must be indicated.

### 6.27.3. Elements

	<u>Data Element</u>	<u>Component Element</u>	<u>Name</u>	<u>Attributes</u>		
M	0420	SGP	Split Goods Placement	M	1	
	0430	MEA	Measurements	C	9	

### 6.27.4. EDI example

A goods group included in different containers can be indicated repeating the goods group (this is the format valenciaportpcs.net always uses in its output messages):

```

GID+1+10:Co1:::PackageType'
FTX+AAA+++Goods description 1'
MEA++G+KGM:2000'
SGP+1+10'

GID+1+10:Co1::: PackageType
FTX+AAA+++Goods description 1'
MEA++G+KGM:2000'
SGP+2+10'
    
```

Alternatively, it can be indicated using multiple SGP segments in the same goods group:

```

GID+1+20:Co1::: PackageType
FTX+AAA+++ Goods description 1'
SGP+1+10'
MEA++G+KGM:2000'
SGP+2+10'
MEA++G+KGM:2000'
    
```

## 6.28 // SG6: . . . SG9: . . . SGP Split Goods Placement

**Segment:** **SGP** Split Goods Placement  
**Position:** 0420 (Trigger Segment)  
**Group:** Segment Group 9 (Split Goods Placement) Conditional (Dependent)  
**Level:** 2  
**Usage:** Mandatory  
**Max Use:** 1

### 6.28.1. Purpose

Element which indicates which container the goods are included in, and how many packages (out of the total) are included in this container.

### 6.28.2. Elements

	Data Element	Component Element	Name	Attributes	
M	C237		EQUIPMENT IDENTIFICATION	M	
M		8260	Equipment Identification number	C	an..17
			Container sequence number, NOT Plate number		
M		1131	Code list identification code	E	an..17
M		3055	Code list responsible agency code	E	an..3
M		2107	Country name code	E	an..3
M	7224		NUMBER OF PACKAGES	C	n..8
			Number of packages included in this container		

### 6.28.3. EDI example

SGP+1+50'

## 6.29 // SG6: . . . SG9: . . . MEA Measurements

**Segment:** **MEA** Measurements  
**Position:** 0430 (Trigger Segment)  
**Group:** Segment Group 9 (Split Goods Placement) Conditional (Dependent)  
**Level:** 2  
**Usage:** Mandatory  
**Max Use:** 1

### 6.29.1. Purpose

Element which contains the weight distribution of the goods in the container.

### 6.29.2. Comments

- If gross weight is not included here, and there isn't more than one SGP segment for this goods group, it is the indicated in the good's MEA segment.

### 6.29.3. Elements

	<u>Data Element</u>	<u>Component Element</u>	<u>Name</u>	<u>Attributes</u>	
M	6311		MEASUREMENT ATTRIBUTE CODE	M	an..3
R	C502		MEASUREMENT DETAILS	€ M	
R		6313	Measured attribute code	€ M	an..3
			<i>General recommendation D4/G42 refers. Code to specify the measured attribute.</i>		
			G		Gross Weight
X		6321	Measurement significance code	€	an..3
C		6155	Non-discrete measurement name code	C	an..17
			Value not used for this FTX segment iteration		
X		6154	Non-discrete measurement name	€	an..70
R	C174		VALUE/RANGE	€ M	
			<i>To specify the measurement value.</i>		
M		6411	Measurement unit code	M	an..3
			<i>To specify the unit of measurement.</i>		
			KGM		Kilograms
R		6314	Measurement value	€ M	an..18
			Gross weight of the goods in this container		

### 6.29.4. EDI example

MEA++G+KGM:11000'

## 6.30 // SG6: . . . DGS Segment Group 10: Dangerous Goods

**Group:** **DGS** Segment Group 10: Dangerous Goods  
**Position:** 0440  
**Group:** Segment Group 6 (Goods Item Details) Conditional (Advised)  
**Level:** 2  
**Usage:** Conditional (Dependent)  
**Max Use:** 99 1

### 6.30.1. Purpose

Group of elements which contains dangerous goods details.

### 6.30.2. Comments

- Dangerous goods details are also interchanged in an empty container Acceptance Order, **unless** a Specific Instruction has been issued to certify that the empty acceptance container has been cleaned of dangerous goods.

### 6.30.3. Elements

		<b>Data Component</b>				
	<b><u>Element</u></b>		<b><u>Element Name</u></b>	<b><u>Attributes</u></b>		
M	0450	DGS	Dangerous Goods	M	1	
R	0460	FTX	Free Text	C	99	
	0470		Segment Group 11: Contact Information	C		9
			<del>Segment Group 12</del>			

## 6.31 // SG6: . . . SG10: . . . DGS Dangerous Goods

**Segment:** **DGS** Dangerous Goods  
**Position:** 0450 (Trigger Segment)  
**Group:** Segment Group 10 (Dangerous Goods) Conditional (Dependent)  
**Level:** 2  
**Usage:** Mandatory  
**Max Use:** 1

### 6.31.1. Purpose

Element which contains dangerous goods details.

### 6.31.2. Comments

- The UN code (*UNDG number*) is mandatory and must be valid.
- The PAV authorization number (*Permission for transport code*) must coincide with all the dangerous goods included in a single container
- The PAV authorization number must be valid, an authorization for the berth number and container plate number must exist.
- No dangerous goods information should be included if the “Empty container cleaned of dangerous goods” additional instruction is included

### 6.31.3. Elements

	Data Element	Component Element	Name	Attributes	
R	8273		<b>DANGEROUS GOODS REGULATIONS CODE</b> <i>Code specifying a dangerous goods regulation.</i>	C	an..3
			IMD		IMO IMDG code
R	C205		<b>HAZARD CODE</b> <i>To identify the code of the dangerous goods.</i>	C	
M		8351	<b>Hazard code identification</b> <i>IMDG Class Number. Dangerous goods code. IMO Class.</i>	M C	an..7
E		8078	Hazard substance/item/page number	E	an..7
E		8092	Hazard code version number	E	an..10
O	C234		<b>UNDG INFORMATION</b> <i>Information on dangerous goods, taken from the United Nations Dangerous Goods classification.</i>	E M	
R		7124	<b>UNDG number</b> <i>United Nations Dangerous Goods (UNDG) identifier The unique serial number assigned within the United Nations to substances and articles contained in a list of the dangerous goods most commonly carried.</i>	E M	n..4
X		7088	Dangerous goods flashpoint	E	an..8
D	C223		<b>DANGEROUS GOODS SHIPMENT FLASHPOINT</b>	E	
O	8339		<b>PACKING GROUP CODE</b> <i>Code specifying the level of danger for which the packaging must cater.</i>	C	an..3
E	8364		EMS NUMBER	E	an..6
E	8410		MFAG	E	an..4
E	8126		TREM CARD IDENTIFIER	E	an..10
E	C235		<b>HAZARD IDENTIFICATION PLACARD DETAILS</b>	E	
E		8158	Hazard identification number upper par	E	an..4
E		8186	Hazard identification number lower par	E	an..4
E	C236		<b>DANGEROUS GOODS LABEL</b>	E	

⊖	8255		PACKING INSTRUCTION CODE	⊖	an..3
⊗	8179		CATEGORY OF MEANS OF TRANSPORT CODE	⊖	an..3
<b>X</b>	<b>8211</b>		<b>PERMISSION FOR TRANSPORT CODE</b>	<b>C</b>	<del>an..3</del> an..12
			<i>Code specifying the authorisation for the transportation of hazardous cargo.</i>		
			Port Authority of Valencia authorisation number for transporting this dangerous cargo.		

### 6.31.4. EDI example

DGS+IMD+1.1D+1004+1++++ PAV auth. '



## 6.32 // SG6: . . . SG10: . . . FTX Free Text

<b>Segment:</b>	<b>FTX</b> Free Text
<b>Position:</b>	0460
<b>Group:</b>	Segment Group 10 (Dangerous Goods) Conditional (Dependent)
<b>Level:</b>	3
<b>Usage:</b>	Conditional (Advised)
<b>Max Use:</b>	9 1

### 6.32.1. Purpose

Element which contains the dangerous goods description.

### 6.32.2. Elements

Data Element		Component Element	Name	Attributes	
M	4451		TEXT SUBJECT CODE QUALIFIER	M	an..3
<i>Code to specify the purpose of the text.</i>					
		AAA	<i>Goods description</i>		
Goods item description Plain language description of the nature of a goods item sufficient to identify it for customs, statistical or transport purposes.					
X	4453		TEXT FUNCTION CODE	€	an..3
O	C107		TEXT REFERENCE	O	
M		4441	Free text description code	M	an..17
<i>Code specifying free form text.</i>					
Value not used in this repetition of the FTX segment					
€		<del>1131</del>	<del>Code list identification code</del>	€	<del>an..3</del>
€		<del>3055</del>	<del>Code list responsible agency code</del>	€	<del>an..3</del>
O	C108		TEXT LITERAL	€ M	
<i>Free text literal.</i>					
M		4440	Free text value	M	an..512 an..350
<i>Free text, minimum one line. Description of the dangerous goods.</i>					

### 6.32.3. EDI example

FTX+AAA+++Dangerous goods description'

## 6.33 // SG6: . . . SG10: . . . CTA Segment Group 11: Contact Information

**Segment:** **CTA** Contact Information  
**Position:** 0480  
**Group:** Segment Group 10 (Dangerous Goods)      Conditional  
**Level:** 3  
**Usage:** Conditional  
**Max Use:** 9 Unlimited

### 6.33.1. Purpose

Group of elements which contains the contact details for dangerous goods.

### 6.33.2. Elements

	<u>Data Element</u>	<u>Component Element</u>	<u>Name</u>	<u>Attributes</u>	
M	0490	CTA	Contact Information	C	1
C	0500	COM	Communication Contact	C	9

## 6.34 // SG6: . . . SG10: . . . SG11: . . . CTA Contact Information

**Segment:** **CTA** Contact Information  
**Position:** 0490 (Trigger Segment)  
**Group:** Segment Group 11 (Contact Information) Mandatory  
**Level:** 3  
**Usage:** Mandatory  
**Max Use:** 1

### 6.34.1. Purpose

Element which contains a contact name for the dangerous goods.

### 6.34.2. Comments

- The contact name must be indicated.
- Contacts with the same name for the contact person cannot be repeated.

### 6.34.3. Elements

<u>Data Element</u>	<u>Component Element</u>	<u>Name</u>	<u>Attributes</u>	
3139		CONTACT FUNCTION CODE	C	an..3
C056		DEPARTMENT OR EMPLOYEE DETAILS	C	
		<i>Code and/or name of a contact such as a department or employee.</i>		
	3413	Department of employee identification	C	an..17
	3412	Department of employee	M	an..256 an..35
		<i>Name of a contact, such as a department or employee.</i>		

### 6.34.4. EDI example

CTA++:Contact name'

## 6.35 // SG6: . . . SG10: . . . SG11: . . . COM Contact Information

**Segment:** **COM** Communication Contact  
**Position:** 0500  
**Group:** Segment Group 11 (Contact Information) Conditional  
**Level:** 4  
**Usage:** Conditional  
**Max Use:** 9

### 6.35.1. Purpose

Element which contains the types of contact details for the contact name.

### 6.35.2. Comments

- Both the type of contact and the contact details must be indicated.
- It is not possible to repeat a contact detail for the same type of contact.

### 6.35.3. Elements

	<u>Data Element</u>	<u>Component Element</u>	<u>Name</u>	<u>Attributes</u>	
M	C076		COMMUNICATION CONTACT	C	an..3
			<i>Communication number of a department or employee in a specified channel.</i>		
R		3148	Communication number	M	an..512 an..70
			Contact name's phone number or e-mail address		
R		3155	Communication number code qualifier	M	an..3
			Code which identifies the type of contact details Accepted values:		
			<ul style="list-style-type: none"> <li>• TE: phone number</li> <li>• AL: mobile number</li> <li>• FX: fax</li> <li>• EML: e-mail address</li> </ul>		

### 6.35.4. EDI example

COM+96 123 4567:TE'

## 6.36 // EQD Segment Group 13: Equipment Details

**Group:** **EQD** Segment Group 13: Equipment Details  
**Position:** 0540  
**Group:**  
**Level:** 1  
**Usage:** Conditional Mandatory  
**Max Use:** 9999 1

### 6.36.1. Purpose

Group of elements which contains detailed information about the container included in the Release or Acceptance Order.

### 6.36.2. Elements

	<u>Data Element</u>	<u>Component Element</u>	<u>Name</u>	<u>Attributes</u>		
M	0550	EQD	Equipment Details	M	1	
D	0560	RFF	Reference	C	9-99	
D	0570	EQN	Number of Units	C	1	
Ø	0580	TMD	Transport Movement Details	Ø	1	
Ø	0590	DTM	Date/Time/Period	Ø	9	
Ø	0600	TSR	Transport service requirements	Ø	9	
Ø	0610	LOC	Place Location Identification	Ø	9	
O	0620	MEA	Measurements	C	9	
D	0630	DIM	Dimensions	C	9	
	0640		Segment Group 14:	C		9
O	0650	TMP	Temperature	M	1	
O	0670	SEL	Seal Number	C	9	
O	0680	FTX	Free Text	C	9	
O	0690	HAN	Handling Instructions	C	1	
			Segment Group 15:			
			Segment Group 16:			
			Segment Group 17:			
			Segment Group 18:			
			Segment Group 19:			
	0920		Segment Group 20:	C		9
O	0930	NAD	Name and address	M	1	
O	0940	DTM	Date/Time/Period	C	1	
O	0950	CTA	Contact information	C	1	
O	0960	COM	Communication contact	C	1	
O	0970	RFF	Reference	C	9	
O	0980	FTX	Free Text	C	9	

## 6.37 // SG13: . . . EQD Equipment Details

<b>Segment:</b>	<b>EQD</b> Equipment Details	
<b>Position:</b>	0550 (Trigger Segment)	
<b>Group:</b>	Segment Group 13 (Equipment Details)	Conditional (Dependent)
<b>Level:</b>	1	
<b>Usage:</b>	Mandatory	
<b>Max Use:</b>	1	

### 6.37.1. Purpose

Element which contains detailed information about the container.

### 6.37.2. Comments

- The container plate number must be indicated for all types of operations except for exports and transfers/transhipments of **empty** containers.
- The plate numbers must not be repeated in different containers in the same message.
- In an import operation the container plate number cannot be active in another document in which the same Release Company is used.
- In an export operation the container plate number cannot be active in another document in which the same Container Provider and booking number is used with its acceptance confirmed.
- The ISO code for the type of container (*Equipment Size and Type*) must be indicated and must be valid as per the ISO 6346 standard.
- The operation type (*Equipment Status Code*) must be indicated and must be the same for all the containers included in the document. However, if it does not coincide, the message will not be rejected. However, **the operation type indicated for the first container will be used as the operation type for all the containers.**
  - Transfers consist of full or empty containers being moved between container depots and/or terminals without being loaded/discharged during this process.
  - Transhipments are a type of transfer between vessels (i.e. from terminal to terminal). Thus it is important to indicate the loading berth number at the acceptance terminal.
  - Export cancellations occur when an Inland Transport Export operation has been carried out and the full container is already at a terminal ready to be loaded, but an error or last minute cancellation (by the customer) of the shipment, or a customs issue, or any other reason mean that the full container has to be removed from the terminal. Therefore, it becomes an operation which releases a full container and accepts (generally) an empty container, after this has been emptied at the customer's facilities.
- The container status (*Full or Empty Indicator Code*) with code '4' (empty) is only allowed on orders of an empty container. The rest of the codes are only allowed on orders of a full container.
- If the container is empty on Release or Acceptance, no reefer details will be sent to the Release or Acceptance Company (except to the Release Company of the **empty** container, in which case reefer details are sent to facilitate the configuration of the container to be handed out).

### 6.37.3. Elements

	Data Element	Component Element	Name	Attributes
M	8053		<b>EQUIPMENT TYPE CODE QUALIFIER</b> <i>Code to qualify the type of equipment.</i>	M C an..3
			CN Container	
D	C237		<b>EQUIPMENT IDENTIFICATION</b>	C
D		8260	<b>Equipment Identification number</b>	C an..17 an..11
			Container plate number	
X		1131	Code list identification code <i>Code identifying a user or association maintained code list.</i>	E an..3
D		3055	Code list responsible agency code <i>Code specifying the agency responsible for a code list.</i>	E an..3
X		3207	Country name code	E an..3
D	C224		<b>EQUIPMENT SIZE AND TYPE</b>	E M
O		8155	<b>Equipment size and type description code</b> ISO container type, as per the ISO 6346 standard	E M an..10 an..4
E		1131	Code list identification code	E an..3
E		3055	Code list responsible agency code	E an..3
O		8154	<b>Equipment size and type description</b> Description of the type of container	C an..35
E	8077		EQUIPMENT SUPPLIER CODE	E an..3
O	8249		<b>EQUIPMENT STATUS CODE</b> Code which identifies the type of operation. Accepted values: <ul style="list-style-type: none"> <li>• 3: import</li> <li>• 2: export</li> <li>• 6: transshipment</li> <li>• 10: transfer (positioning)</li> <li>• 15: export cancellation (returned)</li> </ul>	E M an..3
O	8169		<b>FULL OR EMPTY INDICATOR CODE</b> Specific details about the full container Accepted values: <ul style="list-style-type: none"> <li>• 8: full container load (FCL)</li> <li>• 7: less than container load (LCL)</li> <li>• 2: full with other equipment</li> <li>• 4: empty</li> <li>• 5: full</li> </ul>	C an..3

### 6.37.4. EDI example

EQD+CN+ABCU5466894+4332:::HIGH CUBE++3+7'

## 6.38 // SG13: . . . RFF Reference

<b>Segment:</b>	<b>RFF</b> Reference	
<b>Position:</b>	0560	
<b>Group:</b>	Segment Group 13 (Equipment Details)	Conditional (Dependent)
<b>Level:</b>	2	
<b>Usage:</b>	Conditional	
<b>Max Use:</b>	9 99	

### 6.38.1. Purpose

Element which contains references associated with the container.

### 6.38.2. Comments

- If the release or acceptance reference is indicated, it must be unique for all the active Release **and** Acceptance Orders for this Container Provider. This reference cannot be modified in a replacement.
- The bar code (*BarCode*) must be exactly 20 digits, which must all be numbers.
  - If no bar code is indicated, the system will automatically generate one for each new Release or Acceptance Order. This information is given to the Order sender in the acceptance message.
  - If this information is given, it must start with a numeric code assigned to each organisation and must be unique for each new document (Release and Acceptance Order: no two bar codes can be repeated in the system). Request your numeric code from the User Service Desk.
  - Additionally, if the bar code is generated by the user, it must end in an **even** number.
  - The bar code must be printed using Code 128 charset C.
  - The bar code cannot be modified in a replacement.
- The document number for the Release and Acceptance Order is automatically generated by valenciaportpcs.net. It is supplied in the reply message (APERAK) and should be left blank in the original. It can be used to identify a specific document when subsequent replacements or cancellations are sent.
- The document number format generated by valenciaportpcs.net is as follows: **CCCCYYMMDDnnnnnnnn**, where *CCCC* is the PCS code of the document sender (the Contracting Company), *YYMMDD* is the date the document was created (year, month, day), and the rest (*nnnnnnnn*) is a sequential number which is reinitiated at the start of each year.
- The references RDN and FDR are used to integrate each Release/Acceptance Order included in this message with a Transport Instructions document, using the following data fields:
  - PCS document number of the related Transport Instructions (reference RDN)
  - Reference of the Transport Instructions contracting party (reference FDR) + code of that agent (Logistics Operator in the header NAD segment)

If the Release/Acceptance Order includes the specific document it must be integrated with, using any of the two references above, valenciaportpcs.net will look for that document and, after validating certain key data (involved agents coincide, mainly), it will integrate the Release/Acceptance Order into the Unified Transport Document.



### 6.38.3. Elements

Data Element		Component Element	Name	Attributes	
M	C506		REFERENCE	M	
<i>To indicate the references assigned to the document.</i>					
M		1153	Reference function code qualifier	M	an..3
<i>Code to identify the meaning of the reference.</i>					
Code which identifies the reference type Accepted values: <ul style="list-style-type: none"> <li>• <b>AAK:</b> Container provider reference on the Release Order (dispatch order number)</li> <li>• <b>AAJ:</b> Container provider reference on the Acceptance Order (delivery order number)</li> <li>• <b>AAU:</b> Document number assigned by the system to the Release Order (dispatch note number)</li> <li>• <b>DQ:</b> Document number assigned by the system to the Acceptance Order (delivery note number)</li> <li>• <b>LSR:</b> Release Order bar code</li> <li>• <b>LSA:</b> Acceptance Order bar code</li> <li>• <b>CVR:</b> Reference to a container list for bulk transfer of empty containers, for the Release Order</li> <li>• <b>CVA:</b> Reference to a container list for bulk transfer of empty containers, for the Acceptance Order</li> <li>• <b>TPR:</b> Truck plate number on the Release Order</li> <li>• <b>TPA:</b> Truck plate number on the Acceptance Order</li> <li>• <b>TRR:</b> Trailer plate number on the Release Order</li> <li>• <b>TRA:</b> Trailer plate number on the Acceptance Order</li> <li>• <b>RDN:</b> PCS number of the related document</li> <li>• <b>FDR:</b> Logistics operator reference on the related document</li> </ul>					
R		1154	Reference identifier	€ M	an..35
<i>Value of the reference.</i>					

### 6.38.4. EDI example

RFF+AAK:Release Order Reference'

## 6.39 // SG13: . . EQN Number of Units

**Segment:** **EQN** Number of Units  
**Position:** 0570 (Trigger Segment)  
**Group:** Segment Group 13 (Equipment Details) Conditional (Dependent)  
**Level:** 1  
**Usage:** ~~Conditional~~ Mandatory  
**Max Use:** 1

### 6.39.1. Purpose

Element which contains the item number for each container in the group of containers included in the document.

### 6.39.2. Comments

- The item number for each container must be indicated. This number identifies each container in a multi-container UTD and gives it a unique reference even when container plate numbers are not indicated (for example, in export operations where a specific container is not chosen until the empty one is released).
- The item numbers must not be repeated in different containers in the same message.

### 6.39.3. Elements

	Data Element	Component Element	Name	Attributes	
M	C523		NUMBER OF UNITS DETAILS	M	
C		6350	Units Quantity	M	n..15 an..10
			Item number or unique container reference		
X		6353	Unit type code qualifier	C	an..3

### 6.39.4. EDI example

EQN+1'

## 6.40 // SG13: . . . MEA Measurements

<b>Segment:</b>	<b>MEA</b> Measurements
<b>Position:</b>	0620
<b>Group:</b>	Segment Group 13 (Equipment Details)      Conditional (Dependent)
<b>Level:</b>	2
<b>Usage:</b>	Conditional
<b>Max Use:</b>	10

### 6.40.1. Purpose

Element which contains the container weights and certain dimensions only associated with reefer containers.

### 6.40.2. Comments

- The container tare must be indicated.
- The measurement unit (*Measurement Unit Code*) is mandatory for weights and air flow.
- If the container is not a reefer container (according to its ISO type), all data about reefer instructions will be ignored.
- The G qualifier indicates the container gross weight in kilograms.
- The VGM qualifier indicates the container verified gross mass in kilograms.
- Only one qualifier (G or VGM) must be indicated. In case of having both, the first one will be ignored.
- When orders are generated, the verified gross weight qualifier is only valid in acceptance orders if the acceptance container is indicated as full and the operation type is export, transfer or transshipment. This means that the qualifier is ignored in import (although the acceptance container status is full), transfer and transshipment of empty containers. Is the release container status is different from the acceptance container status then the gross weight is moved to the end with the full container, leaving the tare in the empty end.

### 6.40.3. Elements

	<u>Data Element</u>	<u>Component Element</u>	<u>Name</u>	<u>Attributes</u>	
M	6311		MEASUREMENT ATTRIBUTE CODE	M	an..3
R	C502		MEASUREMENT DETAILS	€ M	
R		6313	Measured attribute code	€ M	an..3
			Code which identifies the measurements specified in this element repetition Accepted values: <ul style="list-style-type: none"> <li>• <b>MW:</b> Maximum weight</li> <li>• <b>T:</b> Tare weight</li> <li>• <b>AAO:</b> humidity percentage</li> <li>• <b>AAS:</b> air flow</li> <li>• <b>AVI:</b> ventilation</li> <li>• <b>ZO:</b> oxygen percentage for controlled atmosphere</li> <li>• <b>ZN:</b> nitrogen percentage for controlled atmosphere</li> <li>• <b>ZC:</b> carbon dioxide percentage for controlled atmosphere</li> </ul>		
X		6321	Measurement significance code	€	an..3
C		6155	Non-discrete measurement name code	C	an..17
			Codes to specify non-discrete measurements Accepted ventilation values (measured attribute code = AVI)		

			<ul style="list-style-type: none"> <li>• <b>18:</b> vents open</li> <li>• <b>8:</b> vents closed</li> </ul>		
X		6154	Non-discrete measurement name	€	an..70
R	<b>C174</b>		<b>VALUE/RANGE</b>	€ M	
			<i>To specify the measurement value.</i>		
M		<b>6411</b>	<b>Measurement unit code</b>	M C	an..3
			<i>To specify the unit of measurement.</i>		
			Code which specifies the particular type of free text or coded value. Accepted weight values (measured attribute code = G, MW, T) <ul style="list-style-type: none"> <li>• <b>KGM:</b> kilograms</li> </ul> Accepted air flow values (measured attribute code = AAS) <ul style="list-style-type: none"> <li>• <b>MTQ:</b> cubic meters</li> <li>• <b>FTQ:</b> cubic feet</li> </ul>		
R		<b>6314</b>	<b>Measurement value</b>	€ M	an..18
			Measurement value indicated for weights, humidity percentage, air flow and oxygen, nitrogen and carbon dioxide percentages for controlled atmospheres (not used for ventilation)		

### 6.40.4. EDI example

MEA++T+KGM:20000'

With verified gross mass:

MEA++VGM+KGM:19425'

## 6.41 // SG13: . . DIM Dimensions

**Segment:** **DIM** Dimensions  
**Position:** 0630 (Trigger Segment)  
**Group:** Segment Group 13 (Equipment Details) Conditional (Dependent)  
**Level:** 2  
**Usage:** Conditional  
**Max Use:** 9

### 6.41.1. Purpose

Elements which contains a container's oversized dimensions.

### 6.41.2. Comments

- If the container is not an open container (according to its ISO type), all data related to oversized dimensions will be ignored.

### 6.41.3. Elements

	Data Element	Component Element	Name	Attributes
M	6145		<b>DIMENSION QUALIFIER</b>	M an..3
			<i>To specify the type of off standard dimension indicated.</i>	
			5	<i>Off Standard Dimension Front</i>
			6	<i>Off Standard Dimension Back</i>
			7	<i>Off Standard Dimension Right</i>
			8	<i>Off Standard Dimension Left</i>
			13	<i>Off Standard Dimension Height</i>
M	C211		<b>DIMENSIONS</b>	M
			<i>To specify the dimension value and unit.</i>	
M		6411	<b>Measurement unit code</b>	M C an..3
			CMT	Centimetre
O		6168	<b>Length dimension</b>	M n..15 n..18
			<i>To specify the value of a length dimension.</i>	

### 6.41.4. EDI example

DIM+6+CMT:920'

## 6.42 // SG13: . . . TMP Segment Group 14: Temperature

**Group:** **TMP** Segment Group 14: Temperature  
**Position:** 0640  
**Group:** Segment Group 13 (Equipment Details) Conditional (Advised)  
**Level:** 2  
**Usage:** Conditional (Dependent)  
**Max Use:** 9 1

### 6.42.1. Purpose

Group of elements which contains reefer container temperature settings.

### 6.42.2. Elements

		<b>Data Component</b>				
	<b><u>Element</u></b>	<b><u>Element</u></b>	<b><u>Name</u></b>	<b><u>Attributes</u></b>		
M	0650	TMP	Temperature	M	1	
€	0660	RNG	Range details	€	1	

## 6.43 // SG13: . . . SG14: . . . TMP Temperature

**Segment:** **TMP** Temperature  
**Position:** 0650  
**Group:** Segment Group 14 (Temperature) Conditional (Dependent)  
**Level:** 3  
**Usage:** Mandatory  
**Max Use:** 1

### 6.43.1. Purpose

Element which contains reefer container temperature settings.

### 6.43.2. Comments

- If the container is not a reefer container (according to its ISO type), all data about reefer instructions will be ignored.

### 6.43.3. Elements

	<u>Data Element</u>	<u>Component Element</u>	<u>Name</u>	<u>Attributes</u>
M	6245		TEMPERATURE QUALIFIER	M an..3
			2	Transport temperature
O	C239		TEMPERATURE SETTING	C M
R		6246	Temperature setting value	C M n15 n3
			<i>If the temperature value is negative the minus (-) sign must be transmitted in DE 6246.</i>	
R		6411	Measurement unit code	C M an..8 an..3
			CEL	Celsius
			FAH	Fahrenheit

### 6.43.4. EDI example

TMP+2+4.0:CEL'

## 6.44 // SG13: . . . SEL Seal Number

<b>Segment:</b>	<b><u>SEL</u></b> Seal Number	
<b>Position:</b>	0670	
<b>Group:</b>	Segment Group 13 (Equipment Details)	Conditional (Dependent)
<b>Level:</b>	2	
<b>Usage:</b>	Conditional	
<b>Max Use:</b>	9 Unlimited	

### 6.44.1. Purpose

Elements which contains container seals.

### 6.44.2. Comments

- It is mandatory to send at least a release seal if it is an import, whose release is full in equipments that are not open size or platform.

Seals are updated as follows:

- After a replacement or update (Inland Transport Details or Confirmation message), all seals (both release and acceptance) are replaced by the seals in the new message, except if they are empty in the new message in which case the existing seals in the document are maintained.
- After a Release Confirmation, not only the release seals are replaced by the ones in the Confirmation message, but for transfers and transshipments also the acceptance seals are replaced by the release seals included in the Confirmation message (once again, only if new seals are included, if they aren't the existing ones are maintained).

### 6.44.3. Elements

	<u>Data Element</u>	<u>Component Element</u>	<u>Name</u>	<u>Attributes</u>	
R	9308		SEAL NUMBER	€ M	an..10 an..35
			<i>The identification number of a seal attached to the equipment.</i>		
O	C215		SEAL ISSUER	€ M	
O		9303	Sealing party code	€ M	an..3
			Seal provider Accepted values: <ul style="list-style-type: none"> <li>CU: inspection</li> <li>CA: carrier</li> <li>SH: shipper</li> <li>TO: terminal</li> </ul>		
X		1131	Code list identification code	€	an..3
X		3055	Code list responsible agency code	€	an..3
Ø		9302	Sealing party name	€	an..35
Ø	4517		SEAL CONDITION CODE	€	an..3
X	C208		IDENTITY NUMBER RANGE	€	
X		7402	Object identifier	M	an..35
X		7402	Object identifier	€	an..35
C	4525		SEAL TYPE CODE	€ M	an..3
			Value used to define whether the seals exist on container release or acceptance Accepted values:		



	<ul style="list-style-type: none"><li>• <b>REL:</b> on container release</li><li>• <b>ACC:</b> on container acceptance</li></ul>
--	--

#### 6.44.4. EDI example

SEL+987654+CA+++REL'

## 6.45 // SG13: . . . FTX Free Text

<b>Segment:</b>	<b>FTX</b> Free Text
<b>Position:</b>	0680
<b>Group:</b>	Segment Group 13 (Equipment Details)      Conditional (Dependent)
<b>Level:</b>	2
<b>Usage:</b>	Conditional
<b>Max Use:</b>	9 Unlimited

### 6.45.1. Purpose

Element which contains container release/acceptance remarks and other (coded) instructions.

### 6.45.2. Comments

- If the container is a reefer container (according to its ISO type) it is mandatory to indicate if the container must be connected or not, except for Acceptance Orders of empty containers.
- If the container is a reefer container (according to its ISO type) and it is a merchant haulage, the indicator value (truck connected or not connected) will be ignored.
- If the container is a reefer container (according to its ISO type) and it is a carrier haulage, it is mandatory to indicate if the container must be connected or not to the truck, except for Acceptance Orders of empty containers.
- If the container is a reefer container, and it must be connected in a terminal, then it is mandatory to indicate the temperature (*segment TMP*)
- If the container is not a reefer container (according to its ISO type), all data about reefer instructions will be ignored.
- The status of the container on release and acceptance (whether it is full or empty at any given time) must be indicated.
- The status of the container on release and acceptance must be consistent with the type of operation: full on release for imports, full on acceptance for exports and the same state as on release/acceptance for transfers and transshipments.

### 6.45.3. Elements

<u>Data Element</u>	<u>Component Element</u>	<u>Name</u>	<u>Attributes</u>
M	4451	TEXT SUBJECT CODE QUALIFIER	M an..3
		<i>Code to specify the purpose of the text.</i>	
		Code which identifies the general types of free text. Accepted values: <ul style="list-style-type: none"> <li>• <b>AAI:</b> General information</li> <li>• <b>AEB:</b> Reefer container temperature control instructions</li> <li>• <b>AGK:</b> Equipment status (full/empty)</li> </ul>	
X	4453	FREE TEXT FUNCTION CODE	€ an..3
O	C107	TEXT REFERENCE	O
M	4441	Free text description code	M an..17
		<i>Code specifying free form text.</i>	
		Code which specifies the particular type of free text or coded value. Accepted values for Text Subject Code Qualifier = AAI <ul style="list-style-type: none"> <li>• <b>TO_RELEASE_C:</b> to release company. This type of remark is sent both to the Release Company and to the Transport Operator and Transport Agent (since they will print the Release Order).</li> <li>• <b>TO_ACCEPTANCE_C:</b> to acceptance company. This type of remark</li> </ul>	

		<p>is sent both to the Acceptance Company and to the Transport Operator and Transport Agent (since they will print the Release Order).</p> <p>Accepted values for Text Subject Code Qualifier = AEB</p> <ul style="list-style-type: none"> <li>• <b>CONNECT_TRUCK:</b> connect reefer to truck</li> <li>• <b>CONNECT_TERM:</b> connect reefer in terminal</li> <li>• <b>NO_CONNECT_TRUCK:</b> Do not connect reefer to truck</li> <li>• <b>NO_CONNECT_TERM:</b> Do not connect reefer in terminal</li> <li>• <b>HUMIDIFIER:</b> humidifier indicator</li> <li>• <b>GENERATOR_SET:</b> generator request</li> <li>• <b>REEFER_INSTRUCTS:</b> additional reefer instructions</li> </ul> <p>Accepted values for Text Subject Code Qualifier = AGK</p> <ul style="list-style-type: none"> <li>• <b>RELEASE_FULL:</b> full on release</li> <li>• <b>RELEASE_EMPTY:</b> empty on release</li> <li>• <b>ACCEPTANCE_FULL:</b> full on acceptance</li> <li>• <b>ACCEPTANCE_EMPTY:</b> empty on acceptance</li> </ul>			
⊖		1131	Code list identification code	€	an..17
⊖		3055	Code list responsible agency code	€	an..3
<b>O</b>	<b>C108</b>		<b>TEXT LITERAL</b>	<b>O</b>	
<i>Free text literal.</i>					
<b>M</b>		<b>4440</b>	<b>Free text value</b>	<b>M-C</b>	an..512 an..350
Free text to include the remark (not necessary if it is a coded remark which does not require any additional information)					

### 6.45.4. EDI example

```
FTX+AGK++RELEASE_EMPTY'
FTX+AGK++ACCEPTANCE_FULL'
FTX+AAI++TO_RELEASE_C+Remarks for the release company'
FTX+AEB++CONNECT_TRUCK'
```

## 6.46 // SG13: . . . HAN Handling Instructions

<b>Segment:</b>	<b>HAN</b>	<b>Handling Instructions</b>
<b>Position:</b>	0690	
<b>Group:</b>	Segment Group 13 (Equipment Details)	Conditional (Dependent)
<b>Level:</b>	2	
<b>Usage:</b>	Conditional (Optional)	
<b>Max Use:</b>	4 Unlimited	

### 6.46.1. Purpose

Element which contains additional instructions.

### 6.46.2. Comments

- This segment does not exist in this position in standard EDI for the COPARN message. However, it is included in this guide for specific valenciaportpcs.net business reasons. It occupies the PCD (Percentage Details) segment, which is not used by this specific implementation.
- If additional instructions are included, the type of instructions must be indicated.
- Additional instructions cannot be repeated, except for the 'CUS' instruction which may be repeated as long as each repetition has a different description.
- The additional instruction CDG can only be included when the container is empty on acceptance (this instruction is intended for Acceptance Orders of import operations of dangerous goods).
- The additional instructions CDG and RDG cannot be informed at the same time. These instructions cannot be informed if the container is full on acceptance and release.
- The additional instruction that indicates a change in the Booking Number ('BCH') is useful in the context of merchant haulage: valenciaportpcs.net will copy that change to all documents associated with this one (both the Transport Instructions if this Release/Acceptance Order is integrated in a UTD, and the "opposed" Release/Acceptance Order which belongs to the same transport operation). If this additional instruction is not included, and that reference is changed in a replacement message, it will be rejected if the Release/Acceptance Order has already been integrated in a UTD, since the change of that reference could involve the document to be associated with a different UTD and such new associations are not permitted. This instruction is processed by the system, will not be forwarded to any agent. **IMPORTANT: If this instruction is indicated in any container, the booking number will be changed for all containers in the document, including those without this instruction.**
- The additional instruction requesting the container weighing in the Terminal ('TWE') will be included only in the generated acceptance order as long as the container is full in the acceptance. It will be ignored in case of being empty.
- The additional instruction that indicates Cold Treatment ('CTR') will be allowed only for reefer containers.
- The additional instruction that indicates Smart Container ('SMC') will be allowed just for empty containers in Release Orders.

### 6.46.3. Elements

	<u>Data Element</u>	<u>Component Element</u>	<u>Name</u>	<u>Attributes</u>
C	C524		HANDLING INSTRUCTIONS	€ M
C		4079	Handling instruction description code	€ M an..3

		Additional instructions type Accepted values: <ul style="list-style-type: none"> <li>• <b>REI:</b> reinforced container</li> <li>• <b>SHU:</b> shuttle between Noatum-MSTC terminals</li> <li>• <b>SHO:</b> shipper-owned container</li> <li>• <b>CDG:</b> empty container cleaned of dangerous goods – only used in Acceptance Orders</li> <li>• <b>RDG:</b> empty container with dangerous goods residues</li> <li>• <b>CLE:</b> cleanliness</li> <li>• <b>RTT:</b> return to terminal</li> <li>• <b>FAU:</b> faulty container</li> <li>• <b>FLX:</b> valid for flexitank</li> <li>• <b>BCH:</b> Booking number changed</li> <li>• <b>CUS:</b> other additional instructions (custom)</li> <li>• <b>TWE:</b> terminal weighing</li> <li>• <b>CTR:</b> cold treatment</li> <li>• <b>SMC:</b> smart container</li> </ul>			
X		1131	Code list identification code	€	an..3
X		3055	Code list responsible agency code	€	an..3
<b>C</b>		<b>4078</b>	<b>Handling instruction description</b>	<b>C</b>	<b>an..512</b> <b>an..175</b>
			Description of the additional instructions		

### 6.46.4. EDI example

HAN+RE:::Reinforced container'

## 6.47 // SG13: . . . NAD Segment Group 20: Name and Address

**Group:** **NAD** Segment Group 20: Name and Address  
**Position:** 0920  
**Group:** Segment Group 13 (Equipment Details) Conditional (Dependent)  
**Level:** 2  
**Usage:** Conditional  
**Max Use:** 9

### 6.47.1. Purpose

Group of elements which contains information about agents and locations associated with the container.

### 6.47.2. Elements

		Data Component		Attributes	
	Element	Element	Name		
M	0930	NAD	Name and Address	M	1
C	0940	DTM	Date/Time/Period	C	1
C	0950	CTA	Contact information	C	1 9
C	0960	COM	Communication contact	C	1 9
C	0970	RFF	Reference	C	9
C	0980	FTX	Free Text	C	9

## 6.48 // SG13: . . . SG20: . . . NAD Name and Address

<b>Segment:</b>	<b>NAD</b> Name and Address
<b>Position:</b>	0930 (Trigger Segment)
<b>Group:</b>	Segment Group 20 (Name and Address)      Conditional (Optional)
<b>Level:</b>	2
<b>Usage:</b>	Mandatory
<b>Max Use:</b>	1

### 6.48.1. Purpose

Element which contains information about an agent or location associated with the container.

### 6.48.2. Comments

- Only one repetition of each type (Party Function Code Qualifier) of involved party can be indicated, except for inspection and positioning locations.
- If a Release Company (*Party Function Code Qualifier* with code *PWR*) or Acceptance Company (*Party Function Code Qualifier* with code *DPR*) is included for this container, the equivalent data at document level (header NAD segment) will be ignored
  - *Note:* So as not to modify the meaning of the codes PW and DP in previous versions of this message (used exclusively to include the maritime line for release and acceptance of the container), these new codes (PWR and DPR) have been created to indicate the “real” Release and Acceptance companies for the container.
- If the container is on hire but the leasing agency is unknown, any name can be indicated as the leasing agency name (for example, "LEASING").
- If positioning and inspection details are included, the location and the date of the operation must be indicated. There cannot be two positioning or inspection entries with the same location, date and operation.
- If the release or acceptance company is a PAV Terminal, the container line or shipping line code must be indicated and must be valid for this Terminal.

### 6.48.3. Elements

	<u>Data Element</u>	<u>Component Element</u>	<u>Name</u>	<u>Attributes</u>
M	3035		PARTY FUNCTION CODE QUALIFIER	M   an..3
			<i>Code to identify the function carried out by the specified party.</i>	
			Code which identifies the type of agent or involved party. Accepted values:	
			<ul style="list-style-type: none"> <li>• <b>TO:</b> Container leasing company</li> <li>• <b>FO:</b> Inspection or positioning location</li> <li>• <b>PW:</b> Release Company (Dispatch party) – This repetition is used to inform the Shipping Line and the dates associated with the Release Order</li> <li>• <b>DP:</b> Acceptance Company (Delivery party) – This repetition is used to inform the Shipping Line and the dates associated with the Acceptance Order</li> <li>• <b>PWR:</b> Release Company specific (real) for this container</li> <li>• <b>DPR:</b> Acceptance Company specific (real) for this container</li> <li>• <b>GAR:</b> Transport Agent on the Release Order – This repetition is used to indicate the driver's contact details</li> <li>• <b>GAA:</b> Transport Agent on the Acceptance Order – This repetition is used to indicate the driver's contact details</li> </ul>	
X	C082		PARTY IDENTIFICATION DETAILS	C

			<i>To identify the specified party.</i>		
X		3039	<b>Party identifier</b>	M	an..35
			This element is used in the following cases: <ul style="list-style-type: none"> <li>• For the leasing company (function code TO). In this case, the company's SCAC code must be indicated. Accepted values in appendix of leasing companies (see section 1.6// Related documents)</li> <li>• For inspection and positioning locations (function code FO). In this case, the inspection or positioning location code must be indicated. Accepted values:                         <ul style="list-style-type: none"> <li>• <b>GENERIC_INSPECTION:</b> Border Inspection Post</li> <li>• <b>CUSTOMS</b></li> <li>• <b>PHYTOSANITARY</b></li> <li>• <b>SOIVRE:</b> Foreign Trade Inspection Centre</li> <li>• <b>ANIMAL_HEALTH</b></li> <li>• <b>FOREIGN_HEALTH</b></li> <li>• <b>GENERIC_POSITIONING</b></li> <li>• <b>SCANNER</b></li> <li>• <b>WEIGHING</b></li> </ul> </li> <li>• For the "not real" release or acceptance company (function codes PW or DP). In this case, the container line or shipping line code used by the terminals at the PAV must be indicated. For the "real" Release and Acceptance Companies (function codes PWR and DPR), this field will include the PCS code.</li> </ul>		
X		1131	Code list identification code	€	an..3
X		3055	Code list responsible agency code	€	an..3
X	C058		NAME AND ADDRESS	€	
R	C080		<b>PARTY NAME</b>	C	
			<i>To specify the name of the party.</i>		
M		3036	<b>Party name line</b>	M	an..35
			Name of the agent or involved party (divided up, if necessary, in the five repetitions of the same element) In this case, the name of the "real" Release or Acceptance Company, the name of the leasing company or the name of the shipping line, according to the type of involved party.		
O		3036	<b>Party name line</b>	C	an..35
O		3036	<b>Party name line</b>	C	an..35
O		3036	<b>Party name line</b>	C	an..35
O		3036	<b>Party name line</b>	C	an..35
€		3045	Party name format code	€	an..3
X	C059		<b>STREET</b>	C	
			<i>To specify the address or postal code.</i>		
X		3042	<b>Street and number or post office box</b>	M	an..35
			Address of the agent or involved party (street, number, and other details, except the city and postal code, divided up, if necessary, in the four repetitions of the same element). This is only used for the "real" Release or Acceptance Company and the subcontracted Transport Agent and for the loading/discharge location address		
X		3042	<b>Street and number or post office box</b>	C	an..35
X		3042	<b>Street and number or post office box</b>	C	an..35
X		3042	<b>Street and number or post office box</b>	C	an..35
X	3164		<b>CITY NAME</b>	C	an..35
			<i>Name of the city/town.</i>		
			This is only used for the "real" Release or Acceptance Company and the subcontracted Transport Agent and for the loading/discharge location address		
X	C819		COUNTRY SUB-ENTITY DETAILS	€	
X	3251		<b>POSTAL IDENTIFICATION CODE</b>	C	an..17



	<i>Postal/zip code.</i>
	This is only used for the “real” Release or Acceptance Company and the subcontracted Transport Agent and for the loading/discharge location address

#### 6.48.4. EDI example

NAD+PWR+++Release company+Street number N+City+46000'

## 6.49 // SG13: . . . SG20: . . . DTM Date/Time/Period

**Segment:** **DTM** Date/Time/Period  
**Position:** 0940  
**Group:** Segment Group 20 (Name and Address) Conditional (Optional)  
**Level:** 3  
**Usage:** Conditional  
**Max Use:** 4 5

### 6.49.1. Purpose

Group of elements used to indicate dates and times associated with inspection/positioning, release or admission (i.e. only used in the repetition of the previous NAD element when the involved party code is indicated as Inspection/Positioning Location, Release Company or Acceptance Company).

### 6.49.2. Comments

- The release/acceptance valid from date will be ignored and proposed date will be considered instead.
- The release/acceptance expiration date will be ignored and calculated by Valenciaportpcs.net taking as reference the proposed date. In case of fill this dateshould not be later than the acceptance expiration date. In an original document, these dates cannot be earlier than the date on which the document was sent).
- The proposed release/acceptance date should not be later than the proposed acceptance date. In an original document this data will be required, and these past dates cannot be earlier than the date on which the document was sent. This date will be considered as activation/validity date for the order.
- Release or acceptance dates can be included without including shipping line name or code.

### 6.49.3. Elements

	<u>Data Element</u>	<u>Component Element</u>	<u>Name</u>	<u>Attributes</u>
M	C507		DATE/TIME/PERIOD	C
M		2005	Date or time or period function code qualifier	M an..3
<i>Function of the date.</i>				
Code which identifies the indicated date/time types.				
Accepted values according to the type of coded party in the previous NAD element:				
<ul style="list-style-type: none"> <li>• For inspection and positioning locations (function code FO):                             <ul style="list-style-type: none"> <li>• <b>7:</b> Inspection/positioning date (effective date/time)</li> </ul> </li> <li>• For the release or acceptance company (function codes PW or DP):                             <ul style="list-style-type: none"> <li>• <del>157: Start date of validity of the Release/Acceptance Order (validity start date/time)</del></li> <li>• <b>36:</b> Release or acceptance expiry date (expiry date/time). This date is automatically filled by Valenciaportpcs.net.</li> <li>• <b>396:</b> Release or acceptance date proposed by the contracting company (requested equipment positioning date/time). This date will be considered as</li> </ul> </li> </ul>				

		activation/validity date for the order.		
<b>R</b>		<b>2380</b>	<b>Date or time or period value</b>	<b>M</b>   <b>an..35</b>
<i>Value of the date/time.</i>				
<b>R</b>		<b>2379</b>	<b>Date or time or period format code</b>	<b>C</b>   <b>an..3</b>
<i>Format of the date/time.</i>				
		<b>203</b>	<b>CCYYMMDDHHMM</b>	
<i>Calendar date: C=Century; Y=Year; M=Month; D=Day, H=Hour, MM=Minute</i>				

### 6.49.4. EDI example

DTM+7:201101011530:203'

Example of group SG20 NAD including release dates without maritime line:

NAD+PW'  
DTM+396:201101051530:203'

## 6.50 // SG13: . . . SG20: . . . CTA Contact Information

**Segment:** **CTA** Contact Information  
**Position:** 0950 (Trigger Segment)  
**Group:** Segment Group 20 (Name and Address) Conditional (Optional)  
**Level:** 3  
**Usage:** Conditional  
**Max Use:** 1

### 6.50.1. Purpose

This element contains the name of the contact of the “real” Release or Acceptance Company or the name of the driver on container release and acceptance.

### 6.50.2. Comments

- The contact name must be indicated.
- Contacts with the same name for the contact person cannot be repeated.

### 6.50.3. Elements

Data Element	Component Element	Name	Attributes	
3139		CONTACT FUNCTION CODE	C	an..3
C056		DEPARTMENT OR EMPLOYEE DETAILS	C	
<i>Code and/or name of a contact such as a department or employee.</i>				
	3413	Department of employee identification	C	an..17
	3412	Department of employee	M	an..256 an..35
<i>Name of a contact, such as a department or employee.</i>				

### 6.50.4. EDI example

CTA++:Contact name'

## 6.51 // SG13: . . . SG20: . . . COM Contact Information

**Segment:** **COM** Communication Contact  
**Position:** 0960  
**Group:** Segment Group 20 (Name and Address) Conditional (Optional)  
**Level:** 3  
**Usage:** Conditional  
**Max Use:** 4 9

### 6.51.1. Purpose

Element which contains the type of contact details for the contact name.

### 6.51.2. Comments

- If this group is used to include the driver’s contact details on container release or acceptance, only their mobile number can be indicated.
- Both the type of contact and the contact details must be indicated.
- It is not possible to repeat a contact detail for the same type of contact.
- The contact name must be indicated in the previous CTA segment.

### 6.51.3. Elements

	<u>Data Element</u>	<u>Component Element</u>	<u>Name</u>	<u>Attributes</u>
M	C076		COMMUNICATION CONTACT	C an..3
			<i>Communication number of a department or employee in a specified channel.</i>	
R		3148	Communication number	M an..512 an..70
			Contact name’s phone number or e-mail address	
R		3155	Communication number code qualifier	M an..3
			Code which identifies the type of contact details Accepted values: <ul style="list-style-type: none"> <li>• TE: phone number</li> <li>• AL: mobile number</li> <li>• FX: fax</li> <li>• EML: e-mail address</li> </ul>	

### 6.51.4. EDI example

COM+96 123 4567:TE'

## 6.52 // SG13: . . . SG20: . . . RFF Reference

**Segment:** **RFF** Reference  
**Position:** 0970 (Trigger Segment)  
**Group:** Segment Group 20 (Name and Address) Conditional (Optional)  
**Level:** 3  
**Usage:** Conditional  
**Max Use:** 9

### 6.52.1. Purpose

Element which contains different references associated with the agent or involved party.

### 6.52.2. Elements

	Data Element	Component Element	Name	Attributes
M	C506		REFERENCE	M
			<i>To indicate the references assigned to the document.</i>	
M		1153	Reference function code qualifier	M an..3
			<i>Code to identify the meaning of the reference.</i>	
			Code which identifies the reference type indicated.	
			Accepted values according to the type of coded party in the previous NAD element:	
			<ul style="list-style-type: none"> <li>• For the leasing company (function code TO):                             <ul style="list-style-type: none"> <li>• <b>AKV:</b> Leasing company reference (lease contract reference)</li> </ul> </li> <li>• For the Transport Agent on the Release or Acceptance Order (function codes GAR and GAA):                             <ul style="list-style-type: none"> <li>• <b>ARA:</b> Driver's National Identity Number</li> </ul> </li> </ul>	
R		1154	Reference identifier	€ M an..35
			<i>Value of the reference.</i>	

### 6.52.3. EDI example

RFF+ARA:B01234567'

## 6.53 // SG13: . . . SG20: . . . FTX Free Text

**Segment:** **FTX** Free Text  
**Position:** 0980  
**Group:** Segment Group 20 (Name and Address) Conditional (Optional)  
**Level:** 3  
**Usage:** Conditional  
**Max Use:** 9

### 6.53.1. Purpose

Element which contains free-text remarks.

### 6.53.2. Comments

- This group of elements does not exist in standard EDI for the COPARN message, but is included in this guide for specific valenciaportpcs.net business reasons. Its only function is to provide information about a particular inspection or positioning operation to be carried out (i.e. function = FO of the corresponding NAD element).

### 6.53.3. Elements

	<u>Data Element</u>	<u>Component Element</u>	<u>Name</u>	<u>Attributes</u>	
M	4451		TEXT SUBJECT CODE QUALIFIER	M	an..3
			<i>Code to specify the purpose of the text.</i>		
			Code which identifies the general types of free text. Accepted values:		
			<ul style="list-style-type: none"> <li><b>AAI:</b> General information</li> </ul>		
X	4453		FREE TEXT FUNCTION CODE	C	an..3
O	C107		TEXT REFERENCE	O	
M		4441	Free text description code	M	an..17
			<i>Code specifying free form text.</i>		
			Code which specifies the particular type of free text or coded value. Accepted values:		
			<ul style="list-style-type: none"> <li><b>OPERATION:</b> details of the inspection or positioning operation</li> </ul>		
⊖		1131	Code list identification code	C	an..17
⊖		3055	Code list responsible agency code	C	an..3
O	C108		TEXT LITERAL	O	
			<i>Free text literal.</i>		
M		4440	Free text value	M-C	an..512 an..75
			Free text to describe the inspection or positioning operation		

### 6.53.4. EDI example

FTX+AAI++OPERATION+Inspection operation'

## 6.54 // SG13: . . . SG20: . . . LOC Place/Location Identification

**Segment:** **LOC** Place/Location Identification  
**Position:** 0990  
**Group:** Segment Group 20 (Name and Address) Conditional (Optional)  
**Level:** 3  
**Usage:** Conditional  
**Max Use:** 9 1

### 6.54.1. Purpose

This element contains the coded location (UNLOCODE) of the city from the “real” Release or Acceptance Company address

### 6.54.2. Comments

- This group of elements does not exist in the EDI standard for the IFTMIN message, but is included in this guide for specific valenciaportpcs.net business reasons.

### 6.54.3. Elements

Data Element		Component Element	Name	Attributes	
M	3227		LOCATION FUNCTION CODE QUALIFIER	M	an..3
			<i>Code to identify the function of the location.</i>		
			Code which identifies the city location. Accepted values:		
			• 26: City		
O	C517		LOCATION IDENTIFICATION	€ M	
			<i>Identification of the location.</i>		
O		3225	Location name code	C	an..25 an..5
			<i>UN/LOCODE code of the name of the location.</i>		

### 6.54.4. EDI example

LOC+26+ESVLC'



## 6.55 // UNT Message Trailer

**Segment:** **UNT** Message Trailer  
**Position:** 1000  
**Group:**  
**Level:** 0  
**Usage:** Mandatory  
**Max Use:** 1

### 6.55.1. Purpose

Closing element of the message.

### 6.55.2. Elements

	Data Element	Component Element	Name	Attributes	
M	0074		NUMBER OF SEGMENTS IN A MESSAGE	M	n..6
M	0062		MESSAGE REFERENCE NUMBER	M	an..14
			<i>Should match DE 0062 in the UNH</i>		

### 6.55.3. EDI example

UNT+15+107589475213'

## 6.56 // UNZ Interchange Trailer

**Segment:** **UNZ** Interchange Trailer  
**Position:** 1010  
**Group:**  
**Level:** 0  
**Usage:** Mandatory  
**Max Use:** 1

### 6.56.1. Purpose

Closing element of the interchange.

### 6.56.2. Elements

	<u>Data Element</u>	<u>Component Element</u>	<u>Name</u>	<u>Attributes</u>	
M	0036		Interchange control count	M	n..6
M	0020		Interchange control reference	M	an..14
			<i>Should match DE S005 in the UNB</i>		

### 6.56.3. EDI example

UNZ+1+Interchange ref'

## 7 // EDI example

The following example aims to serve as a **reference** for sending a complete Release/Acceptance Orders message in EDI format. Logically, the organization codes are not valid codes. Imaginary codes have been used for demonstration purposes. We have not aimed to use logical message content from a business point of view. Sometimes details which would never be used in real life have been used, but once again, the idea is to demonstrate all the possible message elements that may exist.

```

UNB++USER+VALENCIAPORT+110320:0101+MessageNumber'
UNH+MessageNumber+COPARN:D:10B:UN:VP-TT'
BGM+264+PCSDocumentNumber:1.0+9'
TMD+++2'
FTX+FCP+++Observaciones del Proveedor del Equipamiento'
FTX+TTO+++Observaciones para el Transportista'
RFF+BN:BookingNumber1'
RFF+BL:BLNumber1'
RFF+AHY:ForwarderFileNumber1'
TDT+1++2'
TDT+21+Nº de viaje+++++Call1:::Buque de descarga'
RFF+ZCN:1201100000'
LOC+76+UNLO1:::Puerto de origen'
LOC+277+UNLO2:::Puerto de carga'
TDT+22+Nº de viaje+++++Call2:::Buque de carga'
RFF+ZCN:1201100001'
LOC+152+UNLO3:::Puerto de descarga'
LOC+65+UNLO4:::Puerto de destino'
NAD+CW+PCS3++Proveedor del Equipamiento+Dirección del Proveedor del Equipam:iento+City3++46000'
CTA++:Persona de contacto'
COM+91234563:TE'
COM+666123453:AL'
COM+91000123:FX'
COM+email3@email.com:EML'
RFF+ARA:NIF3'
RFF+CAW:Ref. del Proveedor de Eq'
NAD+FB+PCS2++Operador de Transporte+Dirección del Operador de Transport:e+City2++46000'
CTA++:Persona de contacto'
COM+91234567:TE'
COM+666123456:AL'
COM+91000123:FX'
COM+email@email.com:EML'
CTA++:Otro contacto'
COM+91234563:TE'
COM+666123453:AL'
COM+91000123:FX'
COM+email3@email.com:EML'
RFF+ARA:NIF2'
RFF+CAW:Ref del Operador de Transporte'
RFF+ANJ:Nº de autorización de transporte'
NAD+PW+PCS4++Empresa de Entrega+Dirección de la Empresa de Entrega+City4++46000'
RFF+ARA:NIF4'
RFF+CAW:DocumentReference4'
NAD+DP+PCS5++Empresa de Admisión+Dirección de la Empresa de Admisión+City5++46000'
CTA++:Name4'
COM+91234563:TE'
RFF+ARA:NIF5'
RFF+CAW:DocumentReference5'
NAD+FW+PCS6++Operador Logístico'
RFF+ARA:NIF6'
GID+1+1000:Co1:::Tipo de paquete'

```

FTX+AAA+++Descripción de la mercancía 1'  
 PIA++CODEG'  
 MEA++G+KGM:1001'  
 SGP+1+1000'  
 DGS+IMD+IMDGCI1+UND1++1+++++0123456'  
 FTX+AAA+++Mercancía peligrosa'  
 CTA++:Contacto MMPP'  
 COM+phone:TE'  
 GID+2+1000:Co1:::Tipo de paquete'  
 FTX+AAA+++Descripción de la mercancía 2'  
 PIA++CODEG'  
 MEA++G+KGM:1001'  
 SGP+1+1000'  
 EQD+CN+SENU5027004+ISO1:::Tipo de contenedor 1++3+8'  
 RFF+LSR:12345678901234567890'  
 RFF+CVR:List1'  
 RFF+TPR:M-0000-XX'  
 RFF+TRR:V-0000-ZZ'  
 EQN+1'  
 MEA++MW+KGM:3000'  
 MEA++T+KGM:2000'  
 MEA++VGM+KGM:21050'  
 MEA++AAO+:98'  
 MEA++AAS+FTQ:17'  
 MEA++AVI::8'  
 MEA++ZN+:14'  
 MEA++ZC+:15'  
 TMP+2+-15:CEL'  
 SEL+Precinto+CA+++REL'  
 SEL+Precinto+CA+++ACC'  
 SEL+Precinto 2+TO+++ACC'  
 FTX+AAI++TO\_RELEASE\_C+Observaciones para la Empresa de Entrega'  
 FTX+AAI++TO\_ACCEPTANCE\_C+Observaciones para la Empresa de Admisión'  
 FTX+AEB++CONNECT\_TRUCK'  
 FTX+AEB++CONNECT\_TERM'  
 FTX+AEB++HUMIDIFIER'  
 FTX+AEB++GENERATOR\_SET'  
 FTX+AEB++REEFER\_INSTRUCTS+Instrucciones Adicionales Control de Temperatura'  
 FTX+AGK++RELEASE\_EMPTY'  
 FTX+AGK++ACCEPTANCE\_FULL'  
 HAN+SHO:::SHIPPER\_OWNED'  
 HAN+CUS:::CUSTOM'  
 HAN+CDG:::CLEANED\_OF\_DG'  
 HAN+REL:::REINFORCED'  
 NAD+TO+SCA1++Empresa de leasing'  
 RFF+AKV:Ref de leasing'  
 NAD+FO+SCANNER'  
 DTM+7:201103200601:203'  
 FTX+AAI++OPERATION+Operación en el escaner'  
 NAD+FO+CUSTOMS'  
 DTM+7:201103200808:203'  
 FTX+AAI++OPERATION+Operación en Aduanas'  
 NAD+FO+SOIVRE'  
 DTM+7:201103200807:203'  
 FTX+AAI++OPERATION+Operación en el SOIVRE'  
 NAD+PW+SCAC++Línea marítima a la entrega'  
 DTM+396:201103180201:203'  
 NAD+DP+SCAC++Línea marítima a la admisión'  
 DTM+396:201103180201:203'  
 NAD+GAR'  
 CTA++:Nombre del chófer'  
 COM+PhoneNumber1:AL'  
 RFF+ARA:NIF'  
 NAD+GAA'

CTA++:Nombre del chófer'  
COM+PhoneNumber1:AL'  
RFF+ARA:NIF'  
UNT+112+MessageNumber'  
UNZ+1+MessageNumber'



**valenciaport**  **pcs.net**  
Port Community System

User Service Desk  
Avenida Muelle del Turia, s/n  
46024 Valencia  
Tel. No.: + 00 34 902 884 424  
RCI: 10001

[www.valenciaportpcs.net](http://www.valenciaportpcs.net)  
[cau@valenciaportpcs.net](mailto:cau@valenciaportpcs.net)