

# COPRAR EDIFACT User Guide

**valenciaport**  **pcs.net**  
P o r t C o m m u n i t y S y s t e m

## Change Control

VERSION	CHANGED SECTIONS	CHANGE DESCRIPTION	CHANGE DATE
1.1	All	Initial version	14/09/2005
1.2	EQD	Container status 62 (shuttle transshipment) has been added	06/07/2006
	EQD/NAD	SLS (shipping line service) has been added for transshipment operations	
	EQD/LOC	New ports have been added: 76 (original port of loading), 68 (second optional port of discharge), 170 (final port of discharge) for export; 76 (original port of loading, replace previous 7 qualifier), 7 (place of destination) for import	
	EQD/TDT/LOC	Final port of discharge (170) has been added	
	TDT	SLS (shipping line service) has been added	25/09/2006
1.3	Receiver	The COPLIS sender could not be the carrier's agent . The COPORD sender could not be the vessel's agent. The COPLIS receiver could not be the vessel's agent	10/10/2007
	Cancellations	Document is cancelled automatically by the system	
	Replacements	Marítima Valenciana admits replacement function	
		Carrier's agent (NAD "CG") is not mandatory in EquipmentDetails.	
2.0	EQD/TMP/RNG	Decimals in temperature are admitted	11/06/2011
2.1	EQD/FTX	Stowing instructions added	18/12/2013
2.2	EQD/MEA	VGM (Verified Gross Mass) code attribute added	30/03/2016
2.3	EQD/FTX	Stowing code added (VP)	16/05/2017

## Índice

<b>1 // INTRODUCTION</b> .....	<b>5</b>
1.1 // PURPOSE .....	5
1.2 // GENERAL .....	5
1.3 // CONTENTS .....	6
1.4 // REFERENCE DOCUMENTS .....	6
1.5 // SHORTHANDS .....	6
1.6 // STATUS INDICATORS AND USAGE INDICATORS .....	7
<b>2 // MESSAGING</b> .....	<b>8</b>
<b>3 // COPRAR CONTAINER DISCHARGE/LOADING ORDER MESSAGE</b> .....	<b>9</b>
3.1 // INTRODUCTION: .....	9
3.2 // CANCELLATIONS .....	10
<b>4 // SEGMENT UNB</b> .....	<b>11</b>
<b>5 // SEGMENT UNH</b> .....	<b>12</b>
<b>6 // SEGMENT BGM</b> .....	<b>13</b>
<b>7 // SEGMENT DTM</b> .....	<b>15</b>
<b>8 // SEGMENT RFF</b> .....	<b>16</b>
<b>9 // SEGMENT GROUP TDT-RFF</b> .....	<b>17</b>
<b>10 // SEGMENT TDT</b> .....	<b>18</b>
<b>11 // SEGMENT RFF</b> .....	<b>20</b>
<b>12 // SEGMENT LOC</b> .....	<b>21</b>
<b>13 // SEGMENT DTM</b> .....	<b>23</b>
<b>14 // SEGMENT NAD</b> .....	<b>24</b>
<b>15 // SEGMENT CTA</b> .....	<b>26</b>
<b>16 // SEGMENT COM</b> .....	<b>27</b>
<b>17 // SEGMENT GROUP EQD-RFF-LOC-MEA-DIM-SG7-SEL-FTX-DGS-SG10-NAD</b> .....	<b>28</b>
<b>18 // SEGMENT EQD</b> .....	<b>29</b>
<b>19 // SEGMENT RFF</b> .....	<b>31</b>
<b>20 // SEGMENT EQN</b> .....	<b>32</b>
<b>21 // SEGMENT TMD</b> .....	<b>33</b>
<b>22 // SEGMENT DTM</b> .....	<b>34</b>
<b>23 // SEGMENT LOC</b> .....	<b>35</b>
<b>24 // SEGMENT MEA</b> .....	<b>38</b>
<b>25 // SEGMENT DIM</b> .....	<b>39</b>
<b>26 // SEGMENT GROUP TMP-RNG</b> .....	<b>40</b>
<b>27 // SEGMENT TMP</b> .....	<b>41</b>

28 // <b>SEGMENT RNG</b> .....	42
29 // <b>SEGMENT SEL</b> .....	43
30 // <b>SEGMENT FTX</b> .....	44
31 // <b>SEGMENT DGS</b> .....	46
32 // <b>SEGMENT FTX</b> .....	48
33 // <b>SEGMENT CTA</b> .....	49
34 // <b>SEGMENT COM</b> .....	50
35 // <b>SEGMENT EQA</b> .....	51
36 // <b>SEGMENT HAN</b> .....	52
37 // <b>SEGMENT GROUP TDT-DTM-RFF-LOC</b> .....	53
38 // <b>SEGMENT TDT</b> .....	54
39 // <b>SEGMENT DTM</b> .....	57
40 // <b>SEGMENT RFF</b> .....	58
41 // <b>SEGMENT LOC</b> .....	59
42 // <b>SEGMENT NAD</b> .....	61
43 // <b>SEGMENT CNT</b> .....	63
44 // <b>SEGMENT UNT</b> .....	64
45 // <b>SAMPLES</b> .....	65
1.1 // COPORD .....	65
1.2 // COPLIS .....	65

## 1 // Introduction.

---

### 1.1 // Purpose

This user manual is a subset of the implementation guide of the UN/EDIFACT message version 2.0 published by the SMDG User Group for Shipping Lines and Container Terminals.

Valenciaportpcs.net recognises the full copyright of the contents of the manual published by SMDG user group. For the easy understanding of the particularities of the use of this message in the valenciaportpcs.net scenario, this manual reproduces the contents of the SMDG user manual taking into account the provision made by SMDG allowing, without previous consent, to copy the manual.

The user manual published by SMDG is based upon the UN/EDIFACT D.00B directory and the ITIGG document "Principles and Rules for the implementation of transport EDI messages – Transport Equipment Movements – Maritime-related container messages", version 1.3.1, dated September 1996.

The SMDG User Manual provides guidance as to the recommended usage of codes, qualifiers, data elements, composites, segments and groups of segments in the D.00B COPRAR message. The intention is to assist developers to ensure consistent use of the COPRAR message throughout the worldwide trade and transport community. This manual defines the particularities adopted by valenciaportpcs.net for the use of the COPRAR message within the port community of Valenciaport.

### 1.2 // General.

#### *Formal definition*

*"A message to order to the container terminal that the containers specified have to be discharged from a seagoing vessel or have to be loaded into a seagoing vessel. This message is part of a total set of container-related messages. These messages serve to facilitate the intermodal handling of containers by streamlining the information exchange. The business scenario for the container messages is clarified in a separate document, called "Guide to the scenario of EDIFACT container messages".*

The COPRAR message is used to transmit an order to load containers on or discharge containers from a seagoing vessel. This message is commonly sent by the shipping line (or it's agent) to the terminal operator handling the vessel.

In addition to containers to be loaded or discharged, the COPRAR message may also be used to transmit details on containers that are to be shifted on board the vessel or containers that are to be discharged and reloaded (restowed) onto the vessel.

The COPRAR message will also be used to transmit the list of containers that shall be loaded on or discharged from a seagoing vessel among different carriers that are operating the same vessel through joint service agreements. In this context, this message is commonly sent by the shipping line (or it's agent) that has a joint service agreement to the shipping line (or it's agent) that is operating the vessel.

COPRAR message is referred in this guide in this line:

COPLIS message is sent by the carrier's agent to the vessel's agent in order to inform about the containers to be loaded or discharged into/from a vessel. These messages are jointed by the vessel's agent in order to sent the COPORD message to the container terminal.

Marítima Valencia will reply to the COPORD message with an Aperak message, accepting or rejecting it.

Maritima Valenciana can receive COPLIS messages from carrier's agents if the vessel's agent haven't got rights in Valenciaportpcs.net for sending COPORD document.

Cancellations and replacements are possible for COPLIS and COPORD documents if the associated [COPORD or] COARRI documents not exist in the system. In this case the document identifier must be the same one than the identifier in original function.

### 1.3 // Contents

This documents consists of:

- Chapter 1 Introduction.
- Chapter 2 Messaging between actors.
- Chapter 3 COPRAR message structure
- Chapter 4 Samples.

### 1.4 // Reference documents.

<b>User Group for Shipping Lines and Container Terminals (SMDG)</b>	<ul style="list-style-type: none"> <li>• <i>COPRAR User Manual. Version 2.0. March 2003</i></li> </ul>
<b>United Nations Directories for Electronic Data Interchange for Administration, Commerce and Transport (UN/EDIFACT)</b>	<ul style="list-style-type: none"> <li>• <i>COPRAR Version D Release 00B</i></li> </ul>

### 1.5 // Shorthands

<b>APV</b>	<i>Autoridad Portuaria de Valencia</i>
<b>ISO</b>	<i>International Organization for Standardization</i>
<b>M</b>	<i>Mandatory</i>
<b>O</b>	<i>Optional</i>
<b>UN/EDIFACT</b>	<i>United Nations Directories for Electronic Data Interchange for Administration, Commerce and Transport</i>
<b>SMDG</b>	<i>User Group for Shipping Lines and Container Terminals</i>
<b>UN/LOCODE</b>	<i>United Nations Code for Trade and Transport Locations</i>
<b>CM</b>	<i><u>Cargo Agent</u></i>
<b>CB</b>	<i>Vessel's Agent</i>
<b>CN</b>	<i><u>Carriers's agent</u></i>
<b>COPLIS</b>	<i>Equipment list sent by the carrier's agent</i>
<b>COPORD</b>	<i>Charge/ Discharge list sent by the vessel's operator</i>

## 1.6 // STATUS INDICATORS AND USAGE INDICATORS.

### Status Indicators

Status Indicators (“M” and “C”) form part of the UN/EDIFACT standard and indicate a minimum requirement to fulfil the needs of the message structure. They are not adequate for implementation purposes. The Status Indicators are :

<u>Value</u>	<u>Description</u>
M	Mandatory The entity marked as such must appear in all messages, and apply to these messages as well as to any associated implementation guidelines (and consequently is also a Usage Indicator).
C	Conditional The entity is used by agreement between trading partners.

### Usage Indicators

Usage Indicators are implementation–related indicators that further detail the use of “Conditional” Status Indicators. Usage Indicators are applied at all levels of the guidelines and shown adjacent to data items such as segment groups, segments, composite data elements and simple data elements. They dictate the agreed usage of the data items or entities. The Usage Indicators are :

<u>Value</u>	<u>Description</u>
M	Mandatory Indicates the item is mandatory in the UN/EDIFACT message.
R	Required Indicates the item must be transmitted in this implementation.
D	Dependent Indicates that the use of the item is depending on a well-defined condition or set of conditions. These conditions must be clearly specified in the relevant implementation guideline.
O	Optional Indicates that this item is at the need or discretion of both trading partners.
X	Not Used Indicates that this item is not to be used in this implementation.

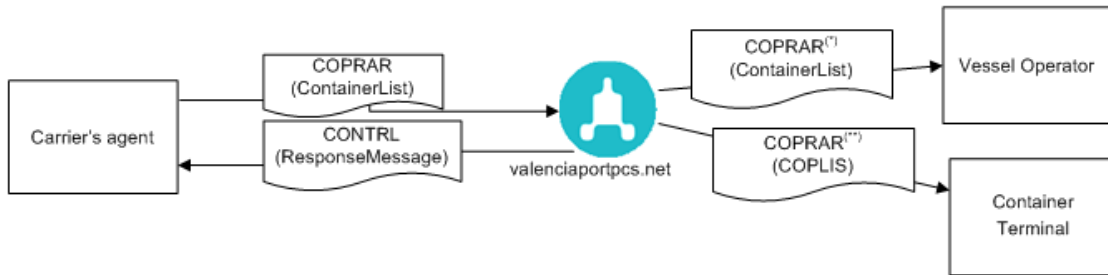
Where an item within a segment group, segment or composite data element is marked with Usage Indicators “M” or “R”, but the segment group, segment or composite data element has been marked “O” or “D” (or for that matter “X”), the item is only to be transmitted when the segment group, segment or composite of which it is a part, is used.

The Mandatory and Required usage of a segment group, segment or composite data element indicated in the SMDG guide is not altered in this user manual. The TMP and TDT segments are an exception of this rule where some Required elements have been changed to Optional. However the Optional or Dependent usage may be altered and specified as Not Used in this user manual. This change implies that, although the segment group, segment or composite data element is allowed to appear in the message, the transaction never has to rely in this information and has to be ignored.

Other particularities included in this user manual are some element restrictions required for the proper handling of this message or the selection of a subset of allowed codes/qualifiers to be used in the message. All these differences will be marked in red in the manual.

## 2 // Messaging

### Original, replace and cancellation for COPRAR-COPLIS sent by goods agent



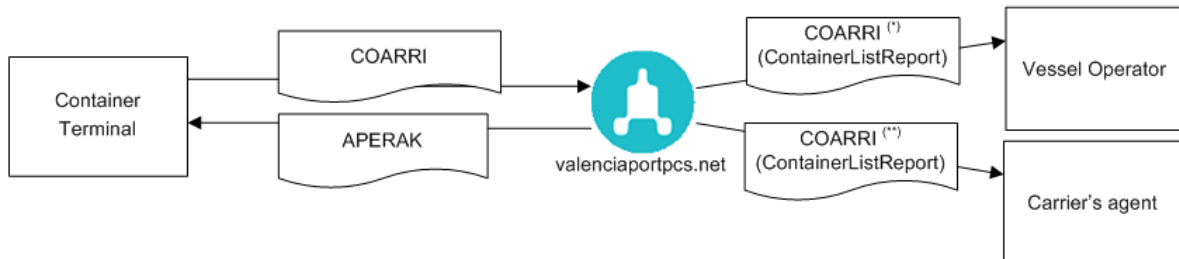
(\*) If CB is not working with Valenciaportpcs.net, the COPRAR sent by CM is forwarded directly to the Stevedoring Company  
 CONTRL(ResponseMessage) will be always sent by valenciaportpcs.net in response to some received message, acknowledging o rejecting it.

### Original, replace and cancellation for COPRAR-COPORD sent by vessel operator



CONTRL(ResponseMessage) will be always sent by valenciaportpcs.net in response to some received message, acknowledging o rejecting it.

### Original and replace for COARRI sent by stevedoring company



(\*\*) CM will only receive his containers if they demand it



## 3 // COPRAR Container Discharge/Loading Order Message

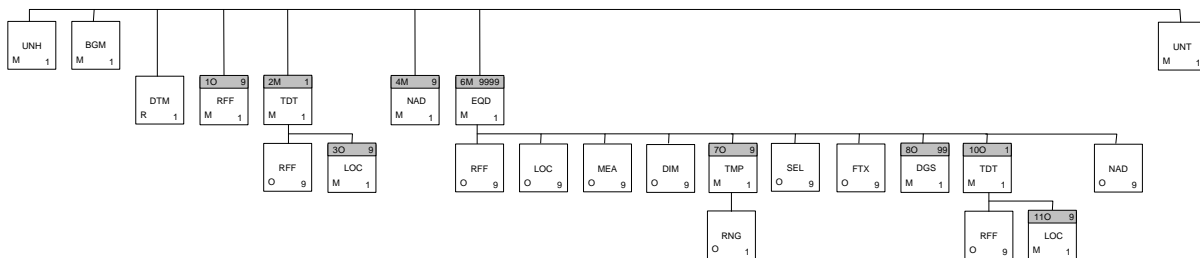
### 3.1 // Introduction:

A message to order to the container terminal that the containers specified have to be discharged from a seagoing vessel or have to be loaded into a seagoing vessel.

This message is part of a total set of container-related messages. These messages serve to facilitate the intermodal handling of containers by streamlining the information exchange. The business scenario for the container messages is clarified in a separate document, called: 'Guide to the scenario of EDIFACT container messages'.

<u>Pos. No.</u>	<u>Seg. ID</u>	<u>Name</u>	<u>Req. Des.</u>	<u>Max.Use</u>	<u>Group Repeat</u>	<u>Notes and Comments</u>
M		UNB	Interchange Header	M	1	
M	0010	UNH	Message Header	M	1	
M	0020	<u>BGM</u>	Beginning of Message	M	1	
R	0030	DTM	Date/Time/Period	C	9	
O	0050	Segment Group 1: RFF		C	9	
M	0060	RFF	Reference	M	1	
M	0080	Segment Group 2: TDT-RFF-SG3		M	1	
M	0090	<u>TDT</u>	Details of Transport	M	1	
O	0110	<u>RFF</u>	Reference	C	9	
O	0120	Segment Group 3: LOC-DTM		C	9	
M	0130	LOC	Place/Location Identification	M	1	
<del>X</del>	<del>0140</del>	<del>DTM</del>	<del>Date/Time/Period</del>	<del>C</del>	<del>9</del>	
M	0160	Segment Group 4: NAD-SG5		M	9	
M	0170	NAD	Name and Address	M	1	
<del>Q</del>	<del>0180</del>	<del>Segment Group 5: CTA-COM</del>		<del>C</del>	<del>9</del>	
<del>M</del>	<del>0190</del>	<del>CTA</del>	<del>Contact Information</del>	<del>M</del>	<del>1</del>	
<del>Q</del>	<del>0200</del>	<del>COM</del>	<del>Communication Contact</del>	<del>C</del>	<del>9</del>	
M	0210	Segment Group 6: EQD-RFF-EQN-TMD-DTM-LOC-MEA-DIM-SG7-SEL-FTX-SG8-EQA-HAN-SG10-NAD		C	9999	
M	0220	EQD	Equipment Details	M	1	
O	0230	RFF	Reference	C	9	
<del>Q</del>	<del>0240</del>	<del>EQN</del>	<del>Number of Units</del>	<del>C</del>	<del>1</del>	
<del>Q</del>	<del>0250</del>	<del>TMD</del>	<del>Transport Movement Details</del>	<del>C</del>	<del>9</del>	
<del>Q</del>	<del>0260</del>	<del>DTM</del>	<del>Date/Time/Period</del>	<del>C</del>	<del>9</del>	
R	0270	LOC	Place/Location Identification	C	9	
O	0280	MEA	Measurements	C	9	
O	0290	DIM	Dimensions	C	9	
O	0300	Segment Group 7: TMP-RNG		C	9	
M	0310	TMP	Temperature	M	1	
O	0320	RNG	Range Details	C	1	
O	0330	SEL	Seal Number	C	9	
O	0340	FTX	Free Text	C	9	
O	0360	Segment Group 8: DGS-FTX-SG9		C	99	
M	0370	DGS	Dangerous Goods	M	1	
<del>Q</del>	<del>0380</del>	<del>FTX</del>	<del>Free Text</del>	<del>C</del>	<del>9</del>	
<del>Q</del>	<del>0400</del>	<del>Segment Group 9: CTA-COM</del>		<del>C</del>	<del>9</del>	
<del>M</del>	<del>0410</del>	<del>CTA</del>	<del>Contact Information</del>	<del>M</del>	<del>1</del>	
<del>Q</del>	<del>0420</del>	<del>COM</del>	<del>Communication Contact</del>	<del>C</del>	<del>9</del>	
<del>Q</del>	<del>0430</del>	<del>EQA</del>	<del>Attached Equipment</del>	<del>C</del>	<del>9</del>	

⊖	0440	HAN	Handling Instructions	€	9
O	0450		Segment Group 10: TDT-DTM-RFF-SG11	C	1
M	0460	TDT	Details of Transport	M	1
⊖	0470	DTM	Date/Time/Period	€	1
⊖	0470	DTM	Date/Time/Period	€	9
O	0480	RFF	Reference	C	9
O	0490		Segment Group 11: LOC	C	9
M	0500	LOC	Place/Location Identification	M	1
O	0520	NAD	Name and Address	C	9
⊖	0530	UNT	Control Total	€	1
M	0540	UNT	Message Trailer	M	1
M		UNZ	Interchange Trailer	M	1



To support the notification of the Transport Loading/Discharge Instruction of containers to the container terminal, the message scenario for performing these transactions is constituted of the following messages:

- Transport Loading/Discharge Instruction message (message type: COPRAR), by which the Shipping Line / ship-owner operating the vessel, or its Carrier's Agent notifies the list of containers to be loaded to a vessel or discharged from a vessel to the container terminal. This message also allows the replacement or cancellation of this Transport Loading/Discharge Instruction.
- Acknowledgement message (message type: APERAK), by which the container terminal acknowledges the receipt of a COPRAR and informs the sender about the results of the reception of this message (such as rejected because it has syntactic or semantic errors or accepted without errors).
- Status of its processing (message type: APERAK), by which the container terminal informs the sender about the results of the processing in the container terminal's application (such as successfully processed or denied because the requested instruction cannot be performed).

### 3.2 // Cancellations

- For COPLIS, if COPORD and COARRI do not exist in valenciaportpcs.net.
- For a COPORD, if COARRI does not exist in valenciaportpcs.net.

The document (COPLIS or COPORD) is automatically cancelled by de system. Then you can resend a new original list for the vessel, but no replacements or cancellations.

## 4 // Segment UNB

Segment: **UNB** Interchange Header  
 Position:  
 Group:  
 Level: 0  
 Usage: Mandatory  
 Max Use: 1  
 Purpose: Identify an interchange  
 Comments:

Notes: *Sample segment :*  
*UNB+UNOA:2+ TTTI + VALENCIAPORT +060125:0140+20060125012296'*

### Data Element Summary

<u>Attributes</u>	<u>Data Element</u>	<u>Component Element</u>	<u>Name</u>		
M	S001		SYNTAX IDENTIFIER	M	1
M		0001	Syntax identifier <i>UNOA indicating the use of level 'A' character set.</i>	M	an..6
M		0002	Syntax version number <i>2 indicating the use of level 'A' character set.</i>	M	n1
M	S002		SENDER IDENTIFICATION	M	1
M		0004	Sender identification <i>Name code of the message sender: Mailbox assigned by Valenciaportpcs.net to the sender</i> <b>VPPP</b>	M	an..35
X		0007	<del>Code list identification code</del>	€	an..4
X		0008	<del>Return address</del>	€	an..14
M	S003		RECIPIENT IDENTIFICATION	C	1
M		0010	Recipient identification <i>Name code of the message recipient: Mailbox assigned by Valenciaportpcs.net to the recipient</i> <b>VALENCIAPORT</b>	M	an..35
X		0007	<del>Code list identification code</del>	€	an..4
X		0014	<del>Address</del>	€	an..14
M	S004		DATE/TIME OF PREPARATION	M	1
M		0017	Date of preparation <i>Preparation date of the message (format YYMMDD)</i>	M	n6
M		0019	Time of preparation <i>Preparation date of the message (format HHMM)</i>	M	n4
M	0020		INTERCHANGE CONTROL REFERENCE <i>A reference allocated by the sender, uniquely identifying the interchange. This reference must also be transmitted in the UNZ segment.</i>	M	an..14
X	S005		RECIPIENT REFERENCE	€	1
X		0022	<del>Recipient reference</del>	€	an..14
X		0025	<del>Code list recipient reference</del>	€	an..2
X	0026		APPLICATION REFERENCE	€	an..14
X	0029		PROCESS PRIORITY CODE	€	an..1
X	0031		RESPONSE TYPE CODE	€	n1
X	0032		COMMUNICATION IDENTIFIER	€	an..35
X	0035		TRIAL IDENTIFIER	€	n1

## 5 // Segment UNH

<b>Segment:</b>	<b>UNH</b> Message Header
<b>Position:</b>	0010
<b>Group:</b>	
<b>Level:</b>	0
<b>Usage:</b>	Mandatory
<b>Max Use:</b>	1
<b>Purpose:</b>	A service segment starting and uniquely identifying a message. The message type code for the Container discharge/loading order message is COPRAR. Note: Container discharge/loading order messages conforming to this document must contain the following data in segment UNH, composite S009: Data element 0065 COPRAR 0052 D 0054 00B 0051 UN
<b>Comments:</b>	
<b>Notes:</b>	<i>Sample segment :</i> <i>UNH+ VPPP5200310230+COPRAR:D:00B:UN:SMDG20'</i>

### Data Element Summary

<u>Attributes</u>	<u>Data Element</u>	<u>Component Element</u>	<u>Name</u>			
M	0062		<b>MESSAGE REFERENCE NUMBER</b>	M	1	an..14
			<i>Unique message reference assigned by the sender. This reference must also be transmitted in the UNT segment.</i>			
			<i>For the purposes of a proper handling of this message by the valenciaportpcs.net platform the message reference number shall follow the following structure:</i>			
			VVVVACCCCCCCC			
			<i>Where:</i>			
			<ul style="list-style-type: none"> <li>• VVVV (an4) is the identification code of the sender party assigned by valenciaportpcs.net</li> <li>• A: String 1, Year (last digit)</li> <li>• CCCCCCCC (an9) is a unique reference assigned by the sender party to the message.</li> </ul>			
M	S009		<b>MESSAGE IDENTIFIER</b>	M	1	
M		0065	<b>Message type identifier</b>	M		an..6
			<i>COPRAR Container discharge/loading order message</i>			
M		0052	<b>Message type version number</b>	M		an..3
			<i>D Draft version/UN/EDIFACT Directory</i>			
M		0054	<b>Message type release number</b>	M		an..3
			<i>00B Release 2000 – B</i>			
M		0051	<b>Controlling agency</b>	M		an..2
			<i>UN UN/CEFACT</i>			
R		0057	<b>Association assigned code</b>	C		an..6
			<i>SMDG20 SMDG Version 2.0</i>			
Ø	0068		<b>COMMON ACCESS REFERENCE</b>	Ø	1	an..35
			<i>Additional message reference (if required)</i>			
X	S010		<b>STATUS OF THE TRANSFER</b>	Ø	1	
X		0070	<b>Sequence message transfer number</b>	M		n..2
X		0073	<b>First/last sequence message transfer indication</b>	Ø		a1

## 6 // Segment BGM

**Segment:** **BGM** Beginning of Message  
**Position:** 0020  
**Group:**  
**Level:** 0  
**Usage:** Mandatory  
**Max Use:** 1  
**Purpose:** A segment to indicate the beginning of a message and to transmit identifying number and the further specification of the message type (in data element 1001: Document name code), such as Loading order, Discharge order.

**Comments:**

*Although element 4343 (Response Type Code) is optional, valenciaportpcs.net will always send this element requesting the reception of a message acknowledgement.*

*For replace(5) and cancellation(1) functions document identifier must be the same one than the identifier in original function (9).*

*For Marítima Valenciana, replace must be sent as a cancellation plus an original Element 1000 can be used to indicate:*

*COPLIS: Equipment list sent by the carrier's agent*

*COPORD: Charge/ Discharge list sent by the vessel's operator*

*If element 1004 has not be included by the sender, it will be automatically assigned by the system with the following structure: UUUUAAAATNNNNNN*

*UUUU: InterchangeHeader\InterchangeSender\SenderIdentification*

*AAAA: Year (Now)*

*T: I(Import, if 1001=118), E(Export, if 1001=121)*

*NNNNN : sequential number assigned by the system*

**Notes:** *Sample segment :*  
**BGM+118:::COPORD+VPPP2006I000486+9+AB'**

### Data Element Summary

	Data		Name		
	Element	Component Element			
<u>Attributes</u>					
R	C002		DOCUMENT/MESSAGE NAME	C	1
R		1001	Document name code	C	an..3
		118	Transport discharge instruction (import)		
		121	Transport loading instruction (export)		
X		1131	Code list identification code	C	an..17
X		3055	Code list responsible agency code	C	an..3
O		1000	Document name	C	an..35
			COPLIS Equipment List		
			COPORD Charge/Discharge List (default)		
R	C106		DOCUMENT/MESSAGE IDENTIFICATION	C	1
R		1004	Document identifier	C	an..35
			Sender's unique reference number for the document.		
			If code 5 (Replace) or code 1 (Cancellation) is used in element 1225 (Message function code), document identifier must be the same than the one used in the previous message sent with the original message function (code 9 in element 1225).		
X		1056	Version identifier	C	an..9
X		1060	Revision identifier	C	an..6
R	1225		MESSAGE FUNCTION CODE	C	1 an..3
		1	Cancellation.		

<b>O</b>	<b>4343</b>	<b>5</b>	<u><a href="#">Replace</a></u>	
		<b>9</b>	<i>Original</i>	
		<b>RESPONSE TYPE CODE</b>		<b>C 1 an..3</b>
		<i>AB</i>	<i>Message acknowledgement</i>	

## 7 // Segment DTM

**Segment:** **DTM** Date/Time/Period  
**Position:** 0030  
**Group:**  
**Level:** 1  
**Usage:** Conditional (Required)  
**Max Use:** 1  
**Purpose:** A segment to indicate a date and/or time applying to the whole message, such as date and time of document or message issue.

**Comments:** *Only one occurrence of this segment is used. The document/message send date is mandatory.*

**Notes:** *Sample segment :  
 DTM+137:200611141225:203'*

### Data Element Summary

<u>Attributes</u>	<u>Data Element</u>	<u>Component Element</u>	<u>Name</u>		
M	C507		DATE/TIME/PERIOD	M	1
M		2005	Date or time or period function code qualifier 137 Document/message date/time	M	an..3
R		2380	Date or time or period value Date/time that the message was prepared.	C	an..35
R		2379	Date or time or period format code 203 CCYYMMDDHHMM	C	an..3

## 8 // Segment RFF

**Segment:** **RFF** Reference  
**Position:** 0060 (Trigger Segment)  
**Group:** Segment Group 1 (Reference) Conditional (Optional)  
**Level:** 1  
**Usage:** Optional  
**Max Use:** 1  
**Purpose:** A segment to express a reference which applies to the entire message, different from element 1004 of the BGM segment, such as: - container discharge/loading order reference - reference to previous message

**Comments:**

*The notification of the carrier's agent reference number is optional..*

**Notes:**

*Sample segment :  
RFF+AAAY:58S/0220'*

### Data Element Summary

<u>Attributes</u>	<u>Data Element</u>	<u>Component Element</u>	<u>Name</u>		
M	C506		REFERENCE	M	1
M		1153	Reference code qualifier <i>AAAY Carrier's agent reference number</i>	M	an..3
				<p>The carrier's agent reference number is used for the purposes of including an additional reference to the message different from the document identifier (element 1004 of BGM segment)</p>	
R		1154	Reference identifier <i>Reference number</i>	C	an..70
<del>X</del>		<del>1156</del>	<del>Document line identifier</del>	<del>C</del>	<del>an..6</del>
<del>X</del>		<del>4000</del>	<del>Reference version identifier</del>	<del>C</del>	<del>an..35</del>
<del>X</del>		<del>1060</del>	<del>Revision identifier</del>	<del>C</del>	<del>an..6</del>



## 9 // Segment Group TDT-RFF

---

<b>Group:</b>	Segment Group 2 (Details of Transport)	Mandatory
<b>Level:</b>	1	
<b>Usage:</b>	Mandatory	
<b>Max Use:</b>	1	
<b>Comments:</b>	The use of Segment Group 2: TDT-RFF-SG3 is mandatory and only one occurrence of this group is allowed to include the details of the main transport (vessel where the loading/discharge operations will take place)	

## 10 // Segment TDT

**Segment:** **TDT** Details of Transport  
**Position:** 0090 (Trigger Segment)  
**Group:** Segment Group 2 (Details of Transport) Mandatory  
**Level:** 1  
**Usage:** Mandatory  
**Max Use:** 1  
**Purpose:** A segment identifying the voyage of the vessel relevant to the message (main transport).

**Comments:**

*The use of Segment Group 2: TDT-RFF-SG3 is mandatory and only one occurrence of this group is allowed to include the details of the main transport (vessel where the loading/discharge operations will take place)*

*If the vessel operators code (carrier) is not included, the system will try to get it out of the vessel port call reference.  
It's strongly recommended to include the vessel number.*

**Notes:** *Sample segment :*

*TDT+20+1111+1+++CCCC:::CARRIER NAME+++8212661:146::VESSEL NAME'*

**Data Element Summary**

<u>Attributes</u>	<u>Data Element</u>	<u>Component Element</u>	<u>Name</u>			
M	8051		TRANSPORT STAGE CODE QUALIFIER 20 Main-carriage transport	M	1	an..3
D	8028		MEANS OF TRANSPORT JOURNEY IDENTIFIER Vessel operator's voyage number	C	1	an..17
R	C220		MODE OF TRANSPORT	C	1	
R		8067	Transport mode name code 1 Maritime transport (ocean)	C		an..3
X		8066	Transport mode name	E		an..17
⊖	⊖228		TRANSPORT MEANS	E	1	
⊖		8179	Transport means description code Means of transport code (UN/ECE Recommendation 28)	E		an..8
⊖		8178	Transport means description Type of means of transport (free text)	E		an..17
O	C040		CARRIER	C	1	
O		3127	Carrier identifier Vessel operator's code	C		an..17
			Only codes agreed among valenciaportpcs.net system are allowed. The vessel operator's code will be the code assigned to the shipping line / ship-owner which is operating the vessel. Although it is strongly recommended to include this element it is optional (in spite of the Required status specified in the SMDG guide).			
⊖		1131	Code list identification code 172 Carriers	E		an..17
⊖		3055	Code list responsible agency code 20 BIC (Bureau International des Containeurs) 87 Assigned by carrier 166 US, National Motor Freight Classification Association 184 AU, ACOS (Australian Chamber of Shipping) SMD SMDG (Shipplanning Message Development Group) Temporary code	E		an..3

		<i>ZZZ</i>	<i>Mutually defined</i>		
O		3128	Carrier name <i>Vessel operator's name (free text)</i> Carrier name of the vessel's operator (shipping line/ ship-owner which is operating the vessel)	C	an..35
X	8101		<del>TRANSIT DIRECTION INDICATOR CODE</del>	€	1 an..3
X	C401		<del>EXCESS TRANSPORTATION INFORMATION</del>	€	1
X		8457	<del>Excess transportation reason code</del>	M	an..3
X		8459	<del>Excess transportation responsibility code</del>	M	an..3
X		7130	<del>Customer shipment authorisation identifier</del>	€	an..17
D	C222		TRANSPORT IDENTIFICATION	C	1
D		8213	Transport means identification name identifier <i>Lloyd's (IMO) number (if 1131="146") or Radio Call Sign (if 1131="103")</i> It is strongly recommended to include Lloyd's (IMO) vessel number although it is not mandatory as the ship's stay reference number (vessel port call reference) will be provided within this group.	C	an..9
O		1131	Code list identification code <i>146 Lloyd's number (IMO) (recommended, default value)</i> <i>103 Radio Call Sign</i>	C	an..17
Ø		3055	<del>Code list responsible agency code</del> <i>11 Lloyd's register of shipping</i>	€	an..3
O		8212	Transport means identification name <i>Vessel name (free text)</i>	C	an..35
Ø		8453	<del>Transport means nationality code</del> <i>Flag of means of transport (ISO country code)</i>	€	an..3
X	8281		<del>TRANSPORT MEANS OWNERSHIP INDICATOR CODE</del>	€	1 an..3

## 11 // Segment RFF

**Segment:** **RFF** Reference  
**Position:** 0110  
**Group:** Segment Group 2 (Details of Transport) Mandatory  
**Level:** 2  
**Usage:** Conditional (Required)  
**Max Use:** 1  
**Purpose:** A segment to provide alternative (non vessel operator's) voyage number and other references related to the main carriage means of transport.

**Comments:**

*The use of this segment is mandatory. Only one occurrence of this segment is used to indicate the vessel port call reference.  
 If the vessel port call reference included in the message is not valid for the charge/discharge port, the message will not be sent.*

**Notes:** *Sample segment :  
 RFF+ATZ:1200600145'*

### Data Element Summary

<u>Attributes</u>	<u>Data Element</u>	<u>Component Element</u>	<u>Name</u>		
M	C506		REFERENCE	M	1
M		1153	Reference code qualifier <i>ATZ Ship's stay reference number</i>	M	an..3
			<i>Vessel Port Call Reference (Reference assigned by the Port Authority to the ship's stay in port)</i>		
R		1154	Reference identifier <i>Other reference – Vessel Port Call Reference (Reference assigned by the Port Authority to the ship's stay in port: PAAAANNNNN) (if C506.e1153 = 'ATZ')</i> <i>P: 1 (ESVLC), 2(ESGAN), 3 (ESSAG)</i> <i>AAAA: Year</i> <i>NNNNN: vessel port call number</i>	C	an..70
X		1156	Document line identifier	€	an..6
X		4000	Reference version identifier	€	an..35
X		1060	Revision identifier	€	an..6

## 12 // Segment LOC

**Segment:** **LOC** Place/Location Identification  
**Position:** 0130 (Trigger Segment)  
**Group:** Segment Group 3 (Place/Location Identification) Conditional (Optional)  
**Level:** 2  
**Usage:** Optional  
**Max Use:** 1  
**Purpose:** A segment to identify a location related to the means of transport, such as: - place of departure/arrival (terminal within the port)

**Comments:**

*The use of this segment is optional. It is used to inform about the port where the loading or discharge operations will take place.  
 Details of the container terminal are not used in the transaction.*

**Notes:** *Sample segment :  
 LOC+9+NLRTM:::ROTTERDAM*

### Data Element Summary

<u>Attributes</u>	<u>Data Element</u>	<u>Component Element</u>	<u>Name</u>			
M	3227		<b>LOCATION FUNCTION CODE QUALIFIER</b>	M	1	an..3
		9	<i>Place/port of loading</i>			Use this code when the element 1001 (Document name code) of BGM segment is 121 (Transport loading instruction)
		11	<i>Place/port of discharge</i>			Use this code when the element 1001 (Document name code) of BGM segment is 118 (Transport discharge instruction)
R	C517		<b>LOCATION IDENTIFICATION</b>	C	1	
R		3225	<b>Location name code</b>	C		an..25
			<b>UNLOCODE</b>			
Ø		1131	<del>Code list identification code</del>	Ø		an..17
			<del>139 Port</del>			
Ø		3055	<del>Code list responsible agency code</del>	Ø		an..3
			<del>6 UN/ECE (United Nations Economic Commission for Europe)</del>			
O		3224	<b>Location name</b>	C		an..256
			<i>Port name (free text)</i>			
Ø	C519		<del>RELATED LOCATION ONE IDENTIFICATION</del>	Ø	1	
Ø		3223	<del>First related location name code</del>	Ø		an..25
			<del>1st related location code</del>			
Ø		1131	<del>Code list identification code</del>	Ø		an..17
			<del>72 Container terminal</del>			
			<del>266 Marine berth</del>			
			<del>267 Marine wharf</del>			
Ø		3055	<del>Code list responsible agency code</del>	Ø		an..3
			<del>9 EAN (International Article Numbering association)</del>			
			<del>184 AU, ACOS (Australian Chamber of Shipping)</del>			
			<del>SMD SMDG (Shipplanning Message Development Group)</del>			
			<del>Temporary code</del>			
			<del>ZZZ Mutually defined</del>			
Ø		3222	<del>First related location name</del>	Ø		an..70
			<del>1st related location name (free text)</del>			
Ø	C553		<del>RELATED LOCATION TWO IDENTIFICATION</del>	Ø	1	

Ø	3233	Second related location name code <i>2nd related location code</i>	€	an..25
Ø	1131	Code list identification code 72 <i>Container terminal</i> 266 <i>Marine berth</i> 267 <i>Marine wharf</i>	€	an..17
Ø	3055	Code list responsible agency code 9 <i>EAN (International Article Numbering association)</i> 184 <i>AU, ACOS (Australian Chamber of Shipping)</i> SMD <i>SMDG (Shipplanning Message Development Group)</i> <i>Temporary code</i> ZZZ <i>Mutually defined</i>	€	an..3
Ø	3232	Second related location name <i>2nd related location name (free text)</i>	€	an..70
X	5479	RELATION CODE	€	1 an..3

## 13 // Segment DTM

**Segment:** **DTM** **Date/Time/Period**

**Position:** 0140

**Group:** Segment Group 3 (Place/Location Identification) Conditional (Optional)

**Level:** 3

**Usage:** Conditional (Optional)  
 This segment is not used in the transaction.

**Max Use:** 9

**Purpose:** A segment to specify date(s) and time(s) related to a location.

**Comments:**

**Notes:** *Sample segment:*  
**DTM+132:200211131700:203'**

### Data Element Summary

<u>Attributes</u>	<u>Data Element</u>	<u>Component Element Name</u>		
M	€507	DATE/TIME/PERIOD	M	1
M	2005	Date or time or period function code qualifier	M	an..3
		132 <i>Arrival date/time, estimated</i>		
		133 <i>Departure date/time, estimated</i>		
		178 <i>Arrival date/time, actual</i>		
		186 <i>Departure date/time, actual</i>		
R	2380	Date or time or period value	€	an..35
		<i>Arrival/departure date/time</i>		
R	2379	Date or time or period format code	€	an..3
		203 <i>CCYYMMDDHHMM</i>		

## 14 // Segment NAD

**Segment:** **NAD** Name and Address  
**Position:** 0170 (Trigger Segment)  
**Group:** Segment Group 4 (Name and Address) Mandatory  
**Level:** 1  
**Usage:** Mandatory  
**Max Use:** 6  
**Purpose:** A segment to identify the party's which apply to the whole message

**Comments:**

*This segment has six occurrences to inform about the shipping line service, the message sender (MS) and receiver (MR) parties, the regular service code (SLS) and the container terminal (TR).*

*The shipping line service (HR), regular service code (SLS), Container Terminal (TR) and Carrier's agent (CG) are optional. The sender (MS) and receiver (MR) parties are mandatory.*

*"CG" code applies to every container mentioned in grp6 unless in segment NAD (grp6) specified otherwise.*

*For an Equipment List(COPLIS), the sender (MS) must be the carrier's agent (CG). Moreover, the container terminal must always be included, so that in case of no having registered the vessel's operator in Valenciaportpcs.net, the message will be redirected to the related container terminal*

*For a Charge/Discharge List(COPORD, the receiver must be the container terminal.*

**Notes:** *Sample segment :*  
*NAD+MS+TXXX+Sender Name'*  
*NAD+MR+EEEE+Receiver Name'*  
*NAD+HR+CCCC'*

### Data Element Summary

<u>Attributes</u>	<u>Data Element</u>	<u>Component Element</u>	<u>Name</u>		
M	3035	PARTY FUNCTION CODE QUALIFIER		M	1 an..3
		CG	Carrier's agent		
			Carrier's agent to the equipments. Optional. If it is included, for a COPLIS, applies to every container mentioned in grp3 unless in segment NAD (grp3) specified otherwise		
		HR	Shipping line service		
			This code qualifier is used to inform about the maritime shipping line of the vessel. Must be a vessel's agent line valid to the container terminal.		
			Only one shipping line service is allowed. Optional		
		MR	Message recipient		
			Recipient of the document. Only one recipient is allowed. Mandatory. For a COPORD is the container terminal.		
		MS	Document/message issuer/sender		
			Sender of the document. Only one sender is allowed. Mandatory.		
			For a COPLIS is the carrier's agent		
		SLS	Regular service code		
			Regular service code of the vessel. Optional.		
		TR	Container Terminal		
			For an Equipment List(COPLIS) it's mandatory to include the container terminal, but for a Charge/Discharge List(COPORD) it's optional.		



O	C082	<b>PARTY IDENTIFICATION DETAILS</b>	C	1
M	3039	<b>Party identifier</b>	M	an..35
		<i>Company code</i>		
		Codes agreed among valenciaportpcs.net system will be used.		
Ø	<del>1131</del>	<del><b>Code list identification code</b></del>	€	<del>an..17</del>
		<del>160 Party identification</del>		
		<del>172 Carriers</del>		
Ø	<del>3055</del>	<del><b>Code list responsible agency code</b></del>	€	<del>an..3</del>
		<del>20 BIC (Bureau International des Containeurs)</del>		
		<del>87 Assigned by carrier</del>		
		<del>166 US, National Motor Freight Classification Association</del>		
		<del>184 AU, ACOS (Australian Chamber of Shipping)</del>		
		<del>SMD SMDG (Shipplanning Message Development Group)</del>		
		<del>Temporary code</del>		
		<del>ZZZ Mutually defined</del>		
O	C058	<b>NAME AND ADDRESS</b>	C	1
		<i>The use of C058 is allowed to accomodate specific local requirements that exist in several ports. The use of C058 however is in general not recommended - whenever possible it is suggested to use C082 instead.</i>		
M	3124	<b>Name and address description</b>	M	an..35
O	3124	<b>Name and address description</b>	C	an..35
Ø	<del>3124</del>	<del><b>Name and address description</b></del>	€	<del>an..35</del>
Ø	<del>3124</del>	<del><b>Name and address description</b></del>	€	<del>an..35</del>
Ø	<del>3124</del>	<del><b>Name and address description</b></del>	€	<del>an..35</del>
X	C080	<b>PARTY NAME</b>	€	1
X	3036	<b>Party name</b>	M	an..35
X	3036	<b>Party name</b>	€	an..35
X	3036	<b>Party name</b>	€	an..35
X	3036	<b>Party name</b>	€	an..35
X	3036	<b>Party name</b>	€	an..35
X	3045	<b>Party name format code</b>	€	an..3
X	C059	<b>STREET</b>	€	1
X	3042	<b>Street and number or post office box identifier</b>	M	an..35
X	3042	<b>Street and number or post office box identifier</b>	€	an..35
X	3042	<b>Street and number or post office box identifier</b>	€	an..35
X	3042	<b>Street and number or post office box identifier</b>	€	an..35
X	3164	<b>CITY NAME</b>	€	1 an..35
X	C819	<b>COUNTRY SUB-ENTITY DETAILS</b>	€	1
X	3229	<b>Country sub-entity name code</b>	€	an..9
X	1131	<b>Code list identification code</b>	€	an..17
X	3055	<b>Code list responsible agency code</b>	€	an..3
X	3228	<b>Country sub-entity name</b>	€	an..35
X	3251	<b>POSTAL IDENTIFICATION CODE</b>	€	1 an..17
X	3207	<b>COUNTRY NAME CODE</b>	€	1 an..3

## 15 // Segment CTA

**Segment:** ~~CTA~~ **Contact Information**  
**Position:** 0190 (Trigger Segment)  
**Group:** Segment Group 5 (Contact Information) Conditional (Optional)  
**Level:** 2  
**Usage:** Mandatory  
 This segment is not used in the transaction.  
**Max Use:** 1  
**Purpose:** A segment to identify a person or department of a message sender and/or message recipient, such as: information contact  
**Comments:**  
**Notes:** *Sample segment:*  
**CTA+IC+:CARGO-CONTROL'**

### Data Element Summary

<u>Attributes</u>	<u>Data Element</u>	<u>Component Element Name</u>			
R	3139	CONTACT FUNCTION CODE	IC	Information contact	€ 1 an..3
R	C056	DEPARTMENT OR EMPLOYEE DETAILS			€ 1
X		3413 Department or employee name code			€ an..17
R		3412 Department or employee name		Contact name	€ an..35

## 16 // Segment COM

**Segment:** **COM** Communication Contact  
**Position:** 0200  
**Group:** Segment Group 5 (Contact Information) Conditional (Optional)  
**Level:** 3  
**Usage:** Conditional (Optional)  
 This segment is not used in the transaction.  
**Max Use:** 9  
**Purpose:** A segment to identify a communication number of a person or department to whom communication should be directed.

**Comments:**

**Notes:** *Sample segment:*  
*COM+0181372453:TE'*

**Data Element Summary**

<u>Attributes</u>	<u>Data Element</u>	<u>Component Element Name</u>		
M	C076	COMMUNICATION CONTACT	M	3
M		3148 Communication address identifier Contact number.	M	an..512
M		3155 Communication address code qualifier	M	an..3
		EM Electronic mail		
		FX Telefax		
		TE Telephone		
		TL Telex		
		XF X.400 address		

## 17 // Segment Group EQD-RFF-LOC-MEA-DIM-SG7-SEL-FTX-DGS-SG10-NAD

---

<b>Group:</b>	Segment Group 6 (Equipment Details)	Optional
<b>Level:</b>	1	
<b>Usage:</b>	Optional	
<b>Max Use:</b>	9999	
<b>Comments:</b>	The use of Segment Group 6: EQD-RFF-EQN-TMD-DTM-LOC-MEA-DIM-SG7-SEL-FTX-SG8-EQA-HAN-SG10-NAD is mandatory for Original(9) and Replace(5) functions of message. For cancellation(1) function is optional (Only header is transmitted ). It is allowed to include up to 9999 occurrences of this group.	

## 18 // Segment EQD

**Segment:** **EQD** Equipment Details  
**Position:** 0220 (Trigger Segment)  
**Group:** Segment Group 6 (Equipment Details) Optional  
**Level:** 1  
**Usage:** Mandatory  
**Max Use:** 1  
**Purpose:** A segment identifying a container, container size/type. The equipment status may be e.g. import, export, transhipment, shifter.

**Comments:**

*The use of Segment Group 6: EQD-RFF-EQN-TMD-DTM-LOC-MEA-DIM-SG7-SEL-FTX-SG8-EQA-HAN-SG10-NAD is mandatory for Original(9) and Replace(5) functions of message. For cancellation(1) function is optional (Only header is transmitted). It is allowed to include up to 9999 occurrences of this group.*

*The Equipment Identifier (element 8260), the Equipment Size and Type Description Code (element 8155) and the Full or Empty Indicator Code (element 8169) shall be always supplied in valenciaportpcs.net.*

*The Equipment Status Code (element 8249) shall be always supplied in valenciaportpcs.net when the Full or Empty Indicator Code (element 8169) is Full (code <>4).*

*The loading/discharge of empty containers to/from a vessel without specifying equipment identifiers (numbers) is not supported in valenciaportpcs.net implementation guide of the COPRAR message (\*). This kind of operations will be requested to the terminal by other established mechanisms.*

*Please take into account the special considerations of the message for the transhipment operations within the same terminal as they are very important for the appropriate organisation of the container yard.*

**Notes:** *Sample segment :  
EQD+CN+CCCC5174506+4510 ++2+4'*

### Data Element Summary

	Data Element	Component Element	Name			
<b>M</b>	<b>8053</b>		<b>EQUIPMENT TYPE CODE QUALIFIER</b> <i>CN Container</i>	<b>M</b>	<b>1</b>	<b>an..3</b>
<b>O</b>	<b>C237</b>		<b>EQUIPMENT IDENTIFICATION</b>	<b>C</b>	<b>1</b>	
<b>R</b>		<b>8260</b>	<b>Equipment identifier</b> <i>Marks (letters/numbers) identifying equipment. To be transmitted as they appear on the equipment. Nor spaces nor symbols (i.e. "-") are allowed.</i>	<b>C</b>		<b>an..17</b>
<del><b>X</b></del>		<del><b>1131</b></del>	<del><b>Code list identification code</b></del>	<del><b>€</b></del>		<del><b>an..17</b></del>
<del><b>X</b></del>		<del><b>3055</b></del>	<del><b>Code list responsible agency code</b></del>	<del><b>€</b></del>		<del><b>an..3</b></del>
<del><b>X</b></del>		<del><b>3207</b></del>	<del><b>Country name code</b></del>	<del><b>€</b></del>		<del><b>an..3</b></del>
<b>R</b>	<b>C224</b>		<b>EQUIPMENT SIZE AND TYPE</b>	<b>C</b>	<b>1</b>	
<b>R</b>		<b>8155</b>	<b>Equipment size and type description code</b> <i>Equipment size/type code as per ISO6346 (.1 or.2, .2 preferred) This element is always mandatory.</i>	<b>C</b>		<b>an..10</b>
<del><b>Ø</b></del>		<del><b>1131</b></del>	<del><b>Code list identification code</b></del> <i>102 Size and type</i>	<del><b>€</b></del>		<del><b>an..17</b></del>
<del><b>Ø</b></del>		<del><b>3055</b></del>	<del><b>Code list responsible agency code</b></del> <i>5 ISO (International Organization for Standardization)</i>	<del><b>€</b></del>		<del><b>an..3</b></del>
<b>O</b>		<b>8154</b>	<b>Equipment size and type description</b> <i>Equipment size/type (free text)</i>	<b>C</b>		<b>an..35</b>
<del><b>Ø</b></del>	<del><b>8077</b></del>		<del><b>EQUIPMENT SUPPLIER CODE</b></del>	<del><b>€</b></del>	<del><b>1</b></del>	<del><b>an..3</b></del>

		<del>1</del>	<del>Shipper supplied</del>		
		<del>2</del>	<del>Carrier supplied</del>		
		<del>5</del>	<del>Third party supplied</del>		
<b>O</b>	<b>8249</b>	<b>EQUIPMENT STATUS CODE</b>		<b>C</b>	<b>1 an..3</b>
		<u>2</u>	<u>Export</u> This code is used when the container is going to be loaded for an export operation. It is the most habitual status for containers loaded on a vessel (transport loading instruction).		
		<u>3</u>	<u>Import</u> This code is used when the container is going to be discharged for an import operation. It is the most habitual status for containers discharged on a vessel (transport discharge instruction).		
		<u>6</u>	<u>Transshipment</u> This code shall be included if the container is going to be discharged/loaded for a transshipment operation which will take place on the same terminal. The use of this code is very important for the appropriate organisation of the terminal operations and container yard. If the container is going to be transhipped in the same terminal and the message is a Transport Discharge Instruction (code 118 in element 1001 of BGM segment) then Segment Group 10: TDT-DTM-RFF-SG11 should be used to give the details of the subsequent maritime on-carriage transport where the container will be loaded.		
		<u>61</u>	<u>Transshipment in other terminal</u> This code has been added to this guide and it is not a standard SMDG code. It will be used to indicate that the container is going to be discharged/loaded for a transshipment operation but the subsequent/previous load/discharge operation will be/was performed in other container terminal. In this case it is not required to give the details of the subsequent maritime on-carriage transport in the Transport Discharge Instruction.		
		<u>62</u>	<u>Shuttle Transshipment</u> This code shall be included if the container is going to be discharged/loaded for a shuttle transshipment operation. If the message is a Transport Discharge Instruction (code 118 in element 1001 of BGM segment) then Segment Group 10: TDT-DTM-RFF-SG11 should be used to give the details of the subsequent maritime on-carriage transport where the container will be loaded		
		<u>9</u>	<u>Domestic</u> <u>Loaded container for export type operation in which the goods have a destination and Community status. This type of operation is valid only when the operator is authorized operator T2L sea in order to simplify the customs export control by the fiscal security. For this type of operation indicated is necessary to indicate the approval number of the operator in the Reference element within the same group.</u>		
<b>R</b>	<b>8169</b>	<b>FULL OR EMPTY INDICATOR CODE</b>		<b>C</b>	<b>1 an..3</b>
		<u>4</u>	<u>Empty(*)</u>		
		<u>7</u>	<u>LCL, Less than Container Load</u>		
		<u>8</u>	<u>FCL, Full Container Load</u>		
		<u>5</u>	<u>Full</u>		
		<u>Z</u>	<u>Full with other container</u>		

Container Terminals can only use 4 and 5 codes for Empty and Full containers respectively.

## 19 // Segment RFF

**Segment:** **RFF** Reference  
**Position:** 0230  
**Group:** Segment Group 6 (Equipment Details) Mandatory  
**Level:** 2  
**Usage:** Conditional (Optional)  
**Max Use:** 3  
**Purpose:** A segment identifying a reference number which relates to the equipment specified in the preceding EQD segment, such as: - container sequence number - booking number

**Comments:**

*The booking and/or bill of lading references are not required by the container terminal but they are reserved for future use of this message in notifying this information to other parties (i.e. Customs). The container terminals will not reject this message if these references are included.*

**Notes:**

*Sample segment :*  
**RFF+AAAY+2005IT02100005'**  
**RFF+BN:ROT045683'**

### Data Element Summary

<u>Attributes</u>	<u>Data Element</u>	<u>Component Element</u>	<u>Name</u>		
M	C506		REFERENCE	M	1
M		1153	Reference code qualifier	M	an..3
			<i>AAAY</i>		<i>Carrier's agent reference number</i>
					Reference number assigned by the carrier's agent representing the shipping line responsible of the maritime transport of the container to identify its particular loading/discharge order. This carrier's agent may differ from the agent of the carrier operating the vessel in the case of joint service agreements.
			<i>BL</i>		<i>Bill of lading number</i>
					The bill of lading number should be used in discharge operations (as it is already known)
			<i>BN</i>		<i>Booking reference number</i>
					The booking number should be used in loading operations (as the bill of lading number may be not known at this moment)
			<u>ADZ</u>		<u>Trader Account Number</u>
					<u>Authorization number assigned to a licensed operator to endorse documents T2LF and T2L</u>
R		1154	Reference identifier	C	an..70
			<i>Reference number</i>		
X		1156	Document line identifier	C	an..6
X		4000	Reference version identifier	C	an..35
X		1060	Revision identifier	C	an..6

## 20 // Segment EQN

**Segment:** **EQN** Number of Units  
**Position:** 0240  
**Group:** Segment Group 6 (Equipment Details) Mandatory  
**Level:** 2  
**Usage:** Conditional (Optional)  
 This segment is not used in the transaction.  
**Max-Use:** 1  
**Purpose:** A segment to specify the number of containers in one guideline that meets the same equipment details information.  
**Comments:**  
**Notes:** *Sample segment:*  
*EQN+1'*

### Data Element Summary

<u>Attributes</u>	<u>Data Component</u>			
	<u>Element</u>	<u>Element Name</u>		
M	6523	NUMBER OF UNIT DETAILS	M	1
R	6350	Units quantity Number of units	C	n..15
X	6353	Unit type code qualifier	C	an..3



## 21 // Segment TMD

**Segment:** ~~TMD~~ **Transport Movement Details**  
**Position:** 0250  
**Group:** Segment Group 6 (Equipment Details) Mandatory  
**Level:** 2  
**Usage:** Conditional (Optional)  
 This segment is not used in the transaction.  
**Max-Use:** 9  
**Purpose:** A segment to indicate a Full Container Load (FCL) or a Less than Full Container Load (LCL).  
**Comments:**  
**Notes:** *Sample segment:  
 TMD+3++I'*

### Data Element Summary

<u>Attributes</u>	<u>Data Element</u>	<u>Component Element Name</u>		
R	€219	MOVEMENT TYPE	€	1
R		8335 Movement type description code	€	an..3
		2 LCL/LCL		
		= Pier/Pier = CFS/CFS		
		3 FCL/FCL		
		= House/House = CY/CY		
		4 FCL/LCL		
		= House/Pier = CY/CFS		
		5 LCL/FCL		
		= Pier/House = CFS/CY		
X		8334 Movement type description	€	an..35
X	8332	EQUIPMENT PLAN DESCRIPTION	€	1 an..26
Ø	8341	HAULAGE ARRANGEMENTS CODE	€	1 an..3
		1 Carrier		
		2 Merchant		

## 22 // Segment DTM

**Segment:** **DTM**-Date/Time/Period  
**Position:** 0260  
**Group:** Segment Group 6 (Equipment Details) Mandatory  
**Level:** 2  
**Usage:** Conditional (Optional)  
 This segment is not used in the transaction.  
**Max Use:** 9  
**Purpose:** A segment to identify a date/time related to the equipment, such as: actual arrival/departure date/time — CSC expiration date (International Convention for Safe Containers)  
**Comments:**  
**Notes:** *Sample segment:*  
*DTM+378:200109041200:203'*

### Data Element Summary

<u>Attributes</u>	<u>Data Element</u>	<u>Component Element</u>	<u>Name</u>		
M	C507		<b>DATE/TIME/PERIOD</b>	M	1
M		2005	<b>Date or time or period function code qualifier</b>	M	an..3
			7 <i>Effective date/time</i>		
			36 <i>Expiry date</i>		
			94 <i>Production/manufacture date</i>		
			171 <i>Reference date/time</i>		
			181 <i>Positioning date/time of equipment</i>		
			201 <i>Pick-up date/time of equipment</i>		
			371 <i>Hydrotest date</i>		
			376 <i>Biannual terminal inspection date</i>		
			377 <i>Federal Highway Administration (FHWA) inspection date</i>		
			378 <i>Container Safety Convention (CSC) inspection date</i>		
			379 <i>Periodic inspection date</i>		
			395 <i>Equipment positioning date/time, estimated</i>		
			396 <i>Equipment positioning date/time, requested</i>		
			397 <i>Equipment positioning date/time, ultimate</i>		
			400 <i>Cargo release date/time, ultimate</i>		
R		2380	<b>Date or time or period value</b>	E	an..35
			<i>Date or date/time</i>		
R		2379	<b>Date or time or period format code</b>	E	an..3
			102 <i>CCYYMMDD</i>		
			203 <i>CCYYMMDDHHMM</i>		

## 23 // Segment LOC

**Segment:** **LOC** Place/Location Identification  
**Position:** 0270  
**Group:** Segment Group 6 (Equipment Details) Mandatory  
**Level:** 2  
**Usage:** Conditional (Required)  
**Max Use:** 6  
**Purpose:** A segment to identify a location or country related to the equipment, such as: - (final) place/port of discharge - transshipment place - place of delivery

**Comments:**

*The use of the LOC segment is very important for the proper organisation of the operations and the container yard within the terminal.*

*The rules of including the different port/places in the message are dependant of the type of message and of the status of the equipment. This rules are summarised in the following table:*

Status \ Message Type	121 Transport Loading Instruction	118 Transport Discharge Instruction
<b>1 Continental</b> <b>5 Shifter</b> <b>14 Reloader</b> <b>61 Transshipment</b> <b>Other terminal</b>	<b>11 Next port of discharge</b> <b>7 Final place of delivery</b> 76 Original port of loading 68 Second optional port of discharge 170 Final port of discharge	<b>9 Previous port of loading</b> <b>76 Original port of loading</b> 7 Final Place of delivery
<b>2 Export</b>	<b>11 Next port of discharge</b> <b>7 Final place of delivery</b> 76 Original port of loading 68 Second optional port of discharge 170 Final port of discharge	-
<b>3 Import</b>	-	<b>9 Previous port of loading</b> <b>76 Original port of loading</b> 7 Final Place of delivery
<b>6 Transshipment Same terminal</b> <b>62 Shuttle Transshipment</b>	<b>11 Next port of discharge</b> <b>7 Final place of delivery</b> 76 Original port of loading 68 Second optional port of discharge 170 Final port of discharge	<b>*9 Previous port of loading</b> 76 Original port of loading <b>7 Final Place of delivery</b>

- (\*) For transshipment operations within the same terminal or Shuttle transshipments, in the transport discharge instruction, the next port of discharge in the subsequent maritime on-carriage transport shall be included in Segment Group 10: TDT-DTM-RFF-SG11. Optionally the final port of discharge may also be included.
- Ports in bold are required

**Notes:** *Sample segment :*  
**LOC+76+ITLIV;**  
**LOC+11+ESBCN;**  
**LOC+68+FRBOD;**  
**LOC+170+FRBOD;**  
**LOC+7+FRAET;**

### Data Element Summary

**Data Component**

<u>Attributes</u>	<u>Element</u>	<u>Element</u>	<u>Name</u>		
M	3227		LOCATION FUNCTION CODE QUALIFIER	M	1 an..3
		7	Place of delivery This is the port/place where the container will be finally delivered		
		9	Previous Place/port of loading This is the previous port where the container was loaded onto the vessel. This port shall only be used (mandatory) when the message refers to a Transport Discharge Instruction (code 118 in element 1001 of BGM segment).		
		11	Next Place/port of discharge This is the next port of discharge of the container. This port shall only be used (mandatory) when the message refers to a Transport Loading Instruction (code 121 in element 1001 of BGM segment).		
		76	Original port of loading This is the original port of loading of the container.		
		68	Second optional port of discharge This is the second port of discharge of the container. This port shall only be used when the message refers to a Transport Loading Instruction (code 121 in element 1001 of BGM segment).		
		170	Final port of discharge This is the final port of discharge of the container. This port shall only be used when the message refers to a Transport Loading Instruction (code 121 in element 1001 of BGM segment).		
R	C517		LOCATION IDENTIFICATION	C	1
R		3225	Location name code UNLOCODE	C	an..25
⊖		<del>1131</del>	<del>Code list identification code</del> <del>139 Port</del>	⊖	<del>an..17</del>
⊖		<del>3055</del>	<del>Code list responsible agency code</del> <del>5 ISO (International Organization for Standardization) Only to be used when e3227 = 147 (stowage cell) 6 UN/ECE (United Nations Economic Commission for Europe)</del>	⊖	<del>an..3</del>
O		3224	Location name Place/location name (free text)	C	an..256
⊖	C519		RELATED LOCATION ONE IDENTIFICATION	⊖	1
⊖		3223	First related location name code 1st related location code	⊖	an..25
⊖		<del>1131</del>	<del>Code list identification code</del> <del>72 Container terminal 261 Consignee's premises 262 Consignor's premises 263 Packing and/or unpacking facility 264 Storage facility 265 Repair facility 266 Marine berth 267 Marine wharf 268 Gate 269 Warehouse</del>	⊖	<del>an..17</del>
⊖		<del>3055</del>	<del>Code list responsible agency code</del> <del>9 EAN (International Article Numbering association) 184 AU, ACOS (Australian Chamber of Shipping) SMD SMDG (Shipplanning Message Development Group) Temporary code</del>	⊖	<del>an..3</del>

		<i>ZZZ</i>	<i>Mutually defined</i>		
Ø		<b>3222</b>	<b>First related location name</b>	€	an..70
			<i>1st related location name (free text)</i>		
Ø	<b>C553</b>		<b>RELATED LOCATION TWO IDENTIFICATION</b>	€	1
Ø		<b>3233</b>	<b>Second related location name code</b>	€	an..25
			<i>2nd related location code</i>		
Ø		<b>1131</b>	<b>Code list identification code</b>	€	an..17
		<i>5</i>	<i>Facility identification</i>		
		<i>72</i>	<i>Container terminal</i>		
		<i>261</i>	<i>Consignee's premises</i>		
		<i>262</i>	<i>Consignor's premises</i>		
		<i>263</i>	<i>Packing and/or unpacking facility</i>		
		<i>264</i>	<i>Storage facility</i>		
		<i>265</i>	<i>Repair facility</i>		
		<i>266</i>	<i>Marine berth</i>		
		<i>267</i>	<i>Marine wharf</i>		
		<i>268</i>	<i>Gate</i>		
		<i>269</i>	<i>Warehouse</i>		
Ø		<b>3055</b>	<b>Code list responsible agency code</b>	€	an..3
		<i>9</i>	<i>EAN (International Article Numbering association)</i>		
		<i>184</i>	<i>AU, ACOS (Australian Chamber of Shipping)</i>		
		<i>SMD</i>	<i>SMDG (Shipplanning Message Development Group)</i>		
			<i>Temporary code</i>		
		<i>ZZZ</i>	<i>Mutually defined</i>		
Ø		<b>3232</b>	<b>Second related location name</b>	€	an..70
			<i>2nd related location name (free text)</i>		
X	<b>5479</b>		<b>RELATION CODE</b>	€	1 an..3

## 24 // Segment MEA

**Segment:** **MEA** Measurements  
**Position:** 0280  
**Group:** Segment Group 6 (Equipment Details) Mandatory  
**Level:** 2  
**Usage:** Conditional (Optional)  
**Max Use:** 1  
**Purpose:** A segment specifying a physical measurement related to the equipment, such as: - gross weight

**Comments:**

This segment is used only to indicate the gross weight of the container (including its tare weight, in KGM).

Use the attribute code G to indicate a gross weight.

Use the attribute code VGM to indicate a verified gross mass.

In case of receiving the attribute G and the attribute VGM in the same message, the G attribute will be ignored.

The attribute VGM is only valid in loading lists, it will be ignored in other cases.

**Notes:** *Sample segment :*  
**MEA+AAE+G+KGM:28000'**

### Data Element Summary

<u>Attributes</u>	<u>Data Element</u>	<u>Component Element</u>	<u>Name</u>			
M	6311		MEASUREMENT PURPOSE CODE QUALIFIER	M	1	an..3
		AAE	Measurement			
R	C502		MEASUREMENT DETAILS	C	1	
R		6313	Measured attribute code	C		an..3
		G	Gross weight			
			The gross weight of the container includes its tare weight.			
		VGM	Verified Gross Mass			
			The gross weight of the container includes its tare weight.			
X		6321	Measurement significance code	E		an..3
X		6155	Non-discrete measurement name code	E		an..17
X		6154	Non-discrete measurement name	E		an..70
R	C174		VALUE/RANGE	C	1	
M		6411	Measurement unit code	M		an..3
		KGM	Kilograms			
R		6314	Measurement value	C		an..18
			Weight, volume or percentage.			
X		6162	Range minimum value	E		n..18
X		6152	Range maximum value	E		n..18
X		6432	Significant digits quantity	E		n..2
X	7383		SURFACE OR LAYER CODE	E	1	an..3

## 25 // Segment DIM

**Segment:** **DIM** Dimensions  
**Position:** 0290  
**Group:** Segment Group 6 (Equipment Details) Mandatory  
**Level:** 2  
**Usage:** Conditional (Optional)  
**Max Use:** 5  
**Purpose:** A segment specifying physical dimensions related to the equipment, such as: - gross dimensions - off standard dimension general - off standard dimension left - off standard dimension right - off standard dimension back - off standard dimension front

**Comments:**

**Notes:** *Sample segment :*  
*DIM+13+CMT:::23'*

**Data Element Summary**

<u>Attributes</u>	<u>Data Element</u>	<u>Component Element</u>	<u>Name</u>			
M	6145		<b>DIMENSION TYPE CODE QUALIFIER</b>	M	1	an..3
			5			<i>Off-standard dimension front</i>
			6			<i>Off-standard dimension back</i>
			7			<i>Off-standard dimension right</i>
			8			<i>Off-standard dimension left</i>
			13			<i>Off-standard dimensions height</i>
M	C211		<b>DIMENSIONS</b>	M	1	
M		6411	<b>Measurement unit code</b>	M		an..3
			CMT			<i>Centimetres (default value)</i>
			INH			<i>Inches</i>
D		6168	<b>Length dimension value</b>	C		n..15
			<i>Overlength if e6145 = 5 or 6</i>			
D		6140	<b>Width dimension value</b>	C		n..15
			<i>Overwidth if e6145 = 7 or 8</i>			
D		6008	<b>Height dimension value</b>	C		n..15
			<i>Overheight if e6145 = 13</i>			

## 26 // Segment Group TMP-RNG

---

<b>Group:</b>	Segment Group 7 (Temperature)	Conditional (Optional)
<b>Level:</b>	2	
<b>Usage:</b>	Optional	
<b>Max Use:</b>	1	
<b>Comments:</b>	This segment is mandatory when a temperature or temperature range is to be indicated in the container as it is the identifier of Segment Group 7. If a temperature range is to be specified in segment RNG then the Temperature Setting (composite element C239) of this element can be omitted	



## 27 // Segment TMP

**Segment:** **TMP** Temperature  
**Position:** 0310 (Trigger Segment)  
**Group:** Segment Group 7 (Temperature) Conditional (Optional)  
**Level:** 2  
**Usage:** Mandatory  
**Max Use:** 1  
**Purpose:** A segment which identifies the transport temperature setting of the container.  
**Comments:**

*This segment is mandatory when a temperature or temperature range is to be indicated in the container as it is the identifier of Segment Group 7. If a temperature range is to be specified in segment RNG then the Temperature Setting (composite element C239) of this element can be omitted. If both TMP and RNG segments contains temperature values then the values indicated in RNG segment will prevail.*

**Notes:** *Sample segment :  
 TMP+2+-7:CEL'*

*Only to be used when a set temperature is to be specified. When a temperature range is to be specified, the RNG segment must be used.*

### Data Element Summary

<u>Attributes</u>	<u>Data Element</u>	<u>Component Element</u>	<u>Name</u>			
M	6245		TEMPERATURE TYPE CODE QUALIFIER 2 <i>Transport temperature</i>	M	1	an..3
O	C239		TEMPERATURE SETTING	C	1	
R		6246	Temperature value <i>Temperature setting (integer)</i>	C		n..15
R		6411	Measurement unit code CEL <i>Celsius</i> FAH <i>Fahrenheit</i>	C		an..3

## 28 // Segment RNG

**Segment:** **RNG** Range Details  
**Position:** 0320  
**Group:** Segment Group 7 (Temperature) Conditional (Optional)  
**Level:** 3  
**Usage:** Conditional (Optional)  
**Max Use:** 1  
**Purpose:** A segment to specify the transport temperature range setting of the container.  
**Comments:**

*If both TMP and RNG segments contains temperature values then the values indicated in RNG segment will prevail.*

**Notes:** *Sample segment :  
 RNG+5+FAH:046:050'*

*Only to be used when a temperature range is to be specified. When a set temperature is to be specified, the TMP segment must be used.*

### Data Element Summary

<u>Attributes</u>	<u>Data</u>	<u>Component</u>	<u>Name</u>			
	<u>Element</u>	<u>Element</u>				
M	6167		RANGE TYPE CODE QUALIFIER 5 <i>Temperature range</i>	M	1	an..3
R	C280		RANGE	C	1	
M		6411	Measurement unit code CEL <i>Celsius</i> FAH <i>Fahrenheit</i>	M		an..3
R		6162	Range minimum value <i>Minimum temperature</i>	C		n..18
R		6152	Range maximum value <i>Maximum temperature</i>	C		n..18

## 29 // Segment SEL

**Segment:** **SEL** Seal Number  
**Position:** 0330  
**Group:** Segment Group 6 (Equipment Details) Mandatory  
**Level:** 2  
**Usage:** Conditional (Optional)  
**Max Use:** 9  
**Purpose:** A segment identifying a seal number related to the equipment.  
**Comments:**  
**Notes:** *Sample segment :*  
*SEL+NL5694359'*

### Data Element Summary

<u>Attributes</u>	<u>Data Element</u>	<u>Component Element</u>	<u>Name</u>			
R	9308		<b>SEAL IDENTIFIER</b> <i>Seal number</i>	C	1	an..35
Ø	C215		<b>SEAL ISSUER</b>	€	1	
R		9303	<b>Sealing party name code</b> AA <i>Consolidator</i> AB <i>Unknown</i> AC <i>Quarantine agency</i> CA <i>Carrier</i> CU <i>Customs</i> SH <i>Shipper</i> TO <i>Terminal operator</i>	€		an..3
X		1131	<b>Code list identification code</b>	€		an..17
X		3055	<b>Code list responsible agency code</b>	€		an..3
Ø		9302	<b>Sealing party name</b> <i>Sealing party name (free text)</i>	€		an..35
Ø	4517		<b>SEAL CONDITION CODE</b> 1 <i>In right condition</i> 2 <i>Damaged</i>	€	1	an..3
X	C208		<b>IDENTITY NUMBER RANGE</b>	€	1	
X		7402	<b>Object identifier</b>	M		an..35
X		7402	<b>Object identifier</b>	€		an..35

## 30 // Segment FTX

**Segment:** **FTX** Free Text  
**Position:** 0340  
**Group:** Segment Group 6 (Equipment Details) Mandatory  
**Level:** 2  
**Usage:** Conditional (Optional)  
**Max Use:** 3  
**Purpose:** A segment to specify supplementary information related to the equipment, such as: - blockade reason - government inspection service - container loading remarks - container remarks - container order information - additional remarks concerning the container - container safety convention plate - continuous examination program (ACEP)

**Comments:**

*This segment is used for three optional functions:*

- *The first function (Text Subject Code Qualifier equal to AAI) is used to include additional remarks/instruction for the particular container load/discharge operation. The remarks in free text form will be supplied in element 4440 and element 4441 will not be used.*
- *The second function (Text Subject Code Qualifier equal to ACF) is used to indicate additional attribute information concerning the container (in this case if the container is reinforced). In this case element 4441 will be used with the value REINFORCED to indicate such characteristic. It is strongly recommended to indicate the reinforced container attribute to avoid mistakes when these types of containers are requested to be released from the terminal. In this function element 4440 will not be used.*
- *The third function (Text Subject Code Qualifier equal to HAN) is used to indicate stowing instructions, coded in element 444: UD: Under deck, OD: On deck, AB: Away from boiler. In this function element 4440 will not be used.*

**Notes:** *Sample segment :*  
**FTX+AAI+++GENERAL REMARKS'**  
**FTX+ACF++REINFORCED'**  
**FTX+HAN++UD'**

### Data Element Summary

<u>Attributes</u>	<u>Data Element</u>	<u>Component Element</u>	<u>Name</u>			
M	4451		<b>TEXT SUBJECT CODE QUALIFIER</b>	M	1	an..3
		AAI	<i>General information</i>			
			<i>This function is used to provide additional information (general observations) in free text form in element 4440.</i>			
		ACF	<i>Additional attribute information</i>			
			<i>This function is used to indicate that the container is reinforced in element 4441. It is strongly recommended to indicate the reinforced container attribute to avoid mistakes when these types of containers are requested to be released from the terminal.</i>			
		HAN	<i>Stowing instructions</i>			
			<i>This function is used to provide additional information about instructions of stowing. Three codes are possible, described in 4441 element.</i>			
X	4453		<b>FREE TEXT FUNCTION CODE</b>	C	1	an..3
D	C107		<b>TEXT REFERENCE</b>	€	1	
M		4441	<i>Free text value code</i>	M		an..17
			<i>if e4451=ACF : REINFORCED</i>			
			<i>if e4451=HAN: UD: Under Deck</i>			
			<i>OD: On Deck</i>			

AB: Away from Boilers  
BD: Bundle  
DM: Damaged  
DR: Reefer Dry Used  
TS: Top Stowage  
OG: Out of Gauge  
UP: Marble UP(Under deck protected) by  
general cargoes  
OF: On Deck For Flextank  
SR: Special Reefer(Cold Treatment)  
VP: VIP Cargo

Ø		1131	<b>Code list identification code</b> 130 Special handling If e4451 = INV ZZZ Mutually defined If e4451 = ACF, DAR or ABS	€	an..17
Ø		3055	<b>Code list responsible agency code</b> 5 ISO (International Organization for Standardization) If e4451 = ACF 184 AU, ACOS (Australian Chamber of Shipping) If e4451 = INV, DAR or ABS	€	an..3
D M	C108	4440	<b>TEXT LITERAL</b> Free text value General information (if e4451 = AAI) : Free text	C M	1 an..512
Ø		4440	Free text value	€	an..512
Ø		4440	Free text value	€	an..512
Ø		4440	Free text value	€	an..512
Ø		4440	Free text value	€	an..512
X	3453		<b>LANGUAGE NAME CODE</b>	€	1 an..3
X	4447		<b>FREE TEXT FORMAT CODE</b>	€	1 an..3

## 31 // Segment DGS

**Segment:** **DGS** Dangerous Goods  
**Position:** 0370 (Trigger Segment)  
**Group:** Segment Group 8 (Dangerous Goods) Conditional (Optional)  
**Level:** 2  
**Usage:** Optional  
**Max Use:** 99  
**Purpose:** A segment to identify the UN-number and the class of the dangerous goods loaded in the container.

**Comments:**

*This segment must be used to inform that the container contains dangerous goods. Only the IMDG class number is required as the details of the dangerous goods of the container shall be notified to the Port Authority and Terminals using a one-stop-shop procedure with the IFTDGN message.*

**Notes:** *Sample segment :  
DGS+IMD+1.1A+2348'*

### Data Element Summary

<u>Attributes</u>	<u>Data</u>	<u>Component</u>	<u>Name</u>			
	<u>Element</u>	<u>Element</u>				
R	8273		<b>DANGEROUS GOODS REGULATIONS CODE</b> <i>IMD IMO IMDG code</i>	C	1	an..3
R	C205		<b>HAZARD CODE</b>	C	1	
M		8351	<b>Hazard identification code</b> <i>IMDG class / sub-class number "1.1c" format</i>	M		an..7
Ø		8078	<del><b>Additional hazard classification identifier</b></del> <i>IMDG Code page number</i>	€		an..7
Ø		8092	<del><b>Hazard code version identifier</b></del> <i>IMDG Code version number</i>	€		an..10
O	C234		<b>UNDG INFORMATION</b>	C	1	
R		7124	<b>United Nations Dangerous Goods (UNDG) identifier</b> <i>UNDG number</i>	C		n4
X		7088	<del><b>Dangerous goods flashpoint value</b></del>	€		an..8
Ø	C223		<del><b>DANGEROUS GOODS SHIPMENT FLASHPOINT</b></del>	€	1	
R		7106	<del><b>Shipment flashpoint value</b></del> <i>Flashpoint temperature</i>	€		n3
R		6411	<del><b>Measurement unit code</b></del> <i>CEL Celsius FAH Fahrenheit</i>	€		an..3
Ø	8339		<del><b>PACKAGING DANGER LEVEL CODE</b></del> <i>1 Great danger 2 Medium danger 3 Minor danger Packing Group I Packing Group II Packing Group III</i>	€	1	an..3
Ø	8364		<del><b>EMERGENCY PROCEDURE FOR SHIPS IDENTIFIER</b></del> <i>EMS number</i>	€	1	an..6
Ø	8410		<del><b>HAZARD MEDICAL FIRST AID GUIDE IDENTIFIER</b></del> <i>MFAG number</i>	€	1	an..4
Ø	8126		<del><b>TRANSPORT EMERGENCY CARD IDENTIFIER</b></del> <i>TREM card number</i>	€	1	an..10

Ø	C235	<del>HAZARD IDENTIFICATION PLACARD DETAILS</del>	€	1
Ø	8158	<del>Orange hazard placard upper part identifier Hazard identification number, upper part</del>	€	an..4
Ø	8186	<del>Orange hazard placard lower part identifier Hazard identification number, lower part (Substance identification number)</del>	€	an4
Ø	C236	<del>DANGEROUS GOODS LABEL</del>	€	1
R	8246	<del>Dangerous goods marking identifier Dangerous goods label marking 1</del>	€	an..4
Ø	8246	<del>Dangerous goods marking identifier Dangerous goods label marking 2</del>	€	an..4
Ø	8246	<del>Dangerous goods marking identifier Dangerous goods label marking 3</del>	€	an..4
X	8255	<del>PACKING INSTRUCTION TYPE CODE</del>	€	1 an..3
X	8325	<del>HAZARDOUS MEANS OF TRANSPORT CATEGORY CODE</del>	€	1 an..3
X	8211	<del>HAZARDOUS CARGO TRANSPORT AUTHORISATION CODE</del>	€	1 an..3

## 32 // Segment FTX

**Segment:** ~~FTX~~ Free Text  
**Position:** 0380  
**Group:** Segment Group 8 (Dangerous Goods) Conditional (Optional)  
**Level:** 3  
**Usage:** Conditional (Optional)  
 This segment is not used in the transaction.  
**Max-Use:** 9  
**Purpose:** A segment to give additional information regarding dangerous goods, such as : dangerous goods technical name.

**Comments:**

**Notes:** *Sample segment :*  
~~FTX+AAC+PP~~  
~~FTX+AAD+++BUTYL ACRYLATES, STABILIZED~~

**Data Element Summary**

<u>Attributes</u>	<u>Data</u>	<u>Component</u>	<u>Element</u>	<u>Element</u>	<u>Name</u>			
M			4451		TEXT SUBJECT CODE QUALIFIER	M	1	an..3
				AAC	Dangerous goods additional information			
				AAD	Dangerous goods, technical name			
X			4453		FREE TEXT FUNCTION CODE	E	1	an..3
O	C107				TEXT REFERENCE	E	1	
M			4441		Free text value code	M		an..17
					MARPOL details or indication of transport of dangerous goods in limited quantities (if 4451 = AAC).			
				P	Marine Pollutant			
				PP	Severe Marine Pollutant			
				TLQ	Transport of dangerous goods in limited quantities			
X			1131		Code list identification code	E		an..17
X			3055		Code list responsible agency code	E		an..3
O	C108				TEXT LITERAL	E	1	
M			4440		Free text value	M		an..512
					Dangerous goods technical name (if e4451 = AAD)			
					Exterior placard label (if e4451 = AAC)			
O			4440		Free text value	E		an..512
O			4440		Free text value	E		an..512
O			4440		Free text value	E		an..512
O			4440		Free text value	E		an..512
X	3453				LANGUAGE NAME CODE	E	1	an..3
X	4447				FREE TEXT FORMAT CODE	E	1	an..3



## 33 // Segment CTA

**Segment:** ~~CTA~~ **Contact Information**  
**Position:** 0410 (Trigger Segment)  
**Group:** Segment Group 9 (Contact Information) Conditional (Optional)  
**Level:** 3  
**Usage:** Mandatory  
 This segment is not used in the transaction.  
**Max Use:** 1  
**Purpose:** A segment to identify a person or department to be contacted regarding dangerous goods.  
**Comments:**  
**Notes:** *Sample segment:*  
 CTA+HE+:CHEMTREC'

### Data Element Summary

<u>Attributes</u>	<u>Data Element</u>	<u>Component Element Name</u>			
R	3139	CONTACT FUNCTION CODE	C	1	an..3
		HE <i>Emergency dangerous goods contact</i>			
R	C056	DEPARTMENT OR EMPLOYEE DETAILS	C	1	
X		3413 Department or employee name code	C		an..17
R		3412 Department or employee name	C		an..35
		Contact name			

## 34 // Segment COM

<b>Segment:</b>	<del>COM</del> <b>Communication Contact</b>
<b>Position:</b>	0420
<b>Group:</b>	Segment Group 9 (Contact Information) Conditional (Optional)
<b>Level:</b>	4
<b>Usage:</b>	Conditional (Optional) This segment is not used in the transaction.
<b>Max-Use:</b>	9
<b>Purpose:</b>	A segment to specify communication details of the dangerous goods contact.
<b>Comments:</b>	
<b>Notes:</b>	<i>Sample segment:</i> <i>COM+1800873138:TE'</i>

### Data Element Summary

<u>Attributes</u>	<u>Data Element</u>	<u>Component Element Name</u>		
M	<del>€076</del>	<del>COMMUNICATION CONTACT</del>	M	3
M		<del>3148 Communication address identifier Contact number</del>	M	an..512
M		<del>3155 Communication address code qualifier</del>	M	an..3
		<i>EM Electronic mail</i>		
		<i>FX Telefax</i>		
		<i>TE Telephone</i>		
		<i>TL Telex</i>		
		<i>XF X.400 address</i>		

## 35 // Segment EQA

**Segment:** **EQA** Attached Equipment  
**Position:** 0430  
**Group:** Segment Group 6 (Equipment Details) Mandatory  
**Level:** 2  
**Usage:** Conditional (Optional)  
 This segment is not used in the transaction.  
**Max-Use:** 9  
**Purpose:** A segment to identify clip-on units, such as: generator sets  
**Comments:**  
**Notes:** *Sample segment:*  
*EQA+RG+MAEGH0892'*

### Data Element Summary

<u>Attributes</u>	<u>Data Element</u>	<u>Component Element Name</u>			
<b>M</b>	<b>8053</b>	<b>EQUIPMENT TYPE CODE QUALIFIER</b>		<b>M</b>	<b>1 an..3</b>
		<i>AB Chain</i>			
		<i>AD Temperature recorder</i>			
		<i>BL Blocks</i>			
		<i>BR Barge</i>			
		<i>CH Chassis</i>			
		<i>CN Container</i>			
		<i>FSU Forked support</i>			
		<i>LAR Lashing rope</i>			
		<i>RG Reefer generator</i>			
		<i>Clip-on</i>			
		<i>RR Rail-car</i>			
		<i>STR Strap</i>			
		<i>TE Trailer</i>			
		<i>TP Tarpaulin</i>			
<b>O</b>	<b>C237</b>	<b>EQUIPMENT IDENTIFICATION</b>		<b>C</b>	<b>1</b>
<b>R</b>		<b>8260 Equipment identifier</b>		<b>C</b>	<b>an..17</b>
		<i>Equipment number</i>			
<b>X</b>		<b>1131 Code list identification code</b>		<b>C</b>	<b>an..17</b>
<b>X</b>		<b>3055 Code list responsible agency code</b>		<b>C</b>	<b>an..3</b>
<b>X</b>		<b>3207 Country name code</b>		<b>C</b>	<b>an..3</b>

## 36 // Segment HAN

Segment: ~~HAN~~ **HAN** Handling Instructions  
 Position: 0440  
 Group: Segment Group 6 (Equipment Details) Mandatory  
 Level: 2  
 Usage: Conditional (Optional)  
 This segment is not used in the transaction.  
 Max-Use: 9  
 Purpose: A segment to specify handling instructions related to the container equipment.

Comments:

Notes: *Sample segment:*  
**HAN+RFR:130:184'**

### Data Element Summary

	<u>Data Element</u>	<u>Component Element Name</u>		
<u>Attributes</u>				
R	C524	HANDLING INSTRUCTIONS	€	1
Ø		4079 Handling instruction description code <i>Code as per JM4/ITIGG/120</i>	€	an..3
Ø		1131 Code list identification code <i>130 Special handling</i>	€	an..17
Ø		3055 Code list responsible agency code <i>184 AU, ACOS (Australian Chamber of Shipping)</i>	€	an..3
Ø		4078 Handling instruction description <i>Handling instruction (free text)</i>	€	an..70
X	C218	HAZARDOUS MATERIAL	€	1
X		7419 Hazardous material category name code	€	an..4
X		1131 Code list identification code	€	an..17
X		3055 Code list responsible agency code	€	an..3
X		7418 Hazardous material category name	€	an..35

## 37 // Segment Group TDT-DTM-RFF-LOC

---

<b>Group:</b>	Segment Group 10 (Details of Transport)	Conditional (Optional)
<b>Level:</b>	2	
<b>Usage:</b>	Conditional (Optional)	
<b>Max Use:</b>	1	
<b>Comments:</b>	For the purposes of an appropriate organization of the operations and the container yard, the Segment Group 10: TDT-DTM-RFF-SG11 shall be included in Transshipment operations within the same terminal and for Shuttle Transshipment (codes 6 and 62 in element 8249 of EQD segment) when the message refers to a Transport Discharge Instruction (code 118 in element 1001 of BGM Segment). This segment group will contain the details of the subsequent maritime on-carriage transport.	

## 38 // Segment TDT

**Segment:** **TDT** Details of Transport  
**Position:** 0460 (Trigger Segment)  
**Group:** Segment Group 10 (Details of Transport) Conditional (Optional)  
**Level:** 2  
**Usage:** Mandatory

**Max Use:** 1  
**Purpose:** A segment identifying the pre-carriage or on-carriage transport details by which the container will arrive before being loaded or by which the container will depart after being discharged.

**Comments:**

*For the purposes of an appropriate organization of the operations and the container yard, the Segment Group 10: TDT-DTM-RFF-SG11 shall be included in Transshipment operations within the same terminal and for Shuttle Transshipment (codes 6 and 62 in element 8249 of EQD segment) when the message refers to a Transport Discharge Instruction (code 118 in element 1001 of BGM Segment). This segment group will contain the details of the subsequent maritime on-carriage transport.*

*The minimum information required in subsequent maritime on-carriage transport in transshipment operations is the Next Port of Discharge and the Voyage Number of the vessel where the container will be loaded. However, it is strongly recommended for a better planning to include the vessel code (Lloyd's/IMO), the Shipping Line Service and/or the vessel port call reference assigned by the Port Authority of the vessel where the container will be loaded.*

*For the same purposes, it is also strongly recommended to include the TDT segment in Continental or Import operations (codes 1 or 3 in element 8249 of EDQ) when the message refers to a Transport Discharge Instruction (code 118 in element 1001 of BGM Segment). This segment will only be used to indicate if the inland transport will be executed by road or by train.*

**Notes:** *Sample segment :*  
**TDT+30+123+1++LLT+++IBGX:103::GRANDE DETROIT'**

### Data Element Summary

<u>Attributes</u>	<u>Data Element</u>	<u>Component Element</u>	<u>Name</u>			
M	8051		<b>TRANSPORT STAGE CODE QUALIFIER</b>	M	1	an..3
		1	<i>Inland transport</i>			
			To be used in Transport Discharge Instructions (code 118 in element 1001 of BGM segment) when the equipment status is Continental or Import (codes 1 or 3 in element 8249 of EQD segment).			
			When it is used this qualifier the Transport Mode Name Codes (element 8067 of this segment) that can be used are 2 (Rail) or 3 (Road) exclusively.			
		30	<i>On-carriage transport</i>			
			This qualifier shall be used in Transport Discharge Instructions (code 118 in element 1001 of BGM segment) when the equipment status is Transshipment in the same terminal (code 6 in element 8249 of EQD)			
		10	<i>Pre-carriage transport</i>			
			<u>For loading container transshipment.</u>			
O	8028		<b>MEANS OF TRANSPORT JOURNEY IDENTIFIER</b>	C	1	an..17
			<i>Carrier's voyage number</i>			
R	C220		<b>MODE OF TRANSPORT</b>	C	1	

R		8067	<b>Transport mode name code</b>	C	an..3
		1	<i>Maritime Transport</i> To be used if the transport stage qualifier is On-carriage transport (code 30 in element 8051 of this segment).		
		2	<i>Rail</i> To be used if the transport stage qualifier is Inland transport (code 1 in element 8051 of this segment).		
		3	<i>Road</i> To be used if the transport stage qualifier is Inland transport (code 1 in element 8051 of this segment).		
X		8066	<b>Transport mode name</b>	€	an..17
Ø	C228		<b>TRANSPORT MEANS</b>	€	1
Ø		8179	<b>Transport means description code</b>	€	an..8
			<i>Means of transport code (UN/ECE Recommendation 28)</i>		
Ø		8178	<b>Transport means description</b>	€	an..17
			<i>Type of means of transport (free text)</i>		
O	C040		<b>CARRIER</b>	C	1
O		3127	<b>Carrier identifier</b>	C	an..17
			<i>Carrier code</i> This code qualifier is used to inform about the shipping line service of the vessel where the container will be loaded in a transshipment operation. This occurrence is only necessary when the message refers to a Transport Discharge Instruction (code 118 of element 1001 in BGM segment) and the equipment status is Transshipment within the same terminal or Shuttle Transshipment (codes 6 and 62 in element 8249 of EQD segment). In this case, it is mandatory.		
Ø		1131	<b>Code list identification code</b>	€	an..17
		172	<i>Carriers</i>		
Ø		3055	<b>Code list responsible agency code</b>	€	an..3
		20	<i>BIC (Bureau International des Containeurs)</i>		
		87	<i>Assigned by carrier</i>		
		166	<i>US, National Motor Freight Classification Association</i>		
		184	<i>AU, ACOS (Australian Chamber of Shipping)</i>		
		SMD	<i>SMDG (Shipplanning Message Development Group)</i>		
			<b>Temporary code</b>		
		ZZZ	<i>Mutually defined</i>		
O		3128	<b>Carrier name</b>	C	an..35
			<i>Carrier name (free text)</i>		
X		8066	<b>Transport mode name</b>	€	an..17
X	8101		<b>TRANSIT DIRECTION INDICATOR CODE</b>	€	1 an..3
X	C401		<b>EXCESS TRANSPORTATION INFORMATION</b>	€	1
X		8457	<b>Excess transportation reason code</b>	M	an..3
X		8459	<b>Excess transportation responsibility code</b>	M	an..3
X		7130	<b>Customer shipment authorisation identifier</b>	€	an..17
O	C222		<b>TRANSPORT IDENTIFICATION</b>	C	1
O		8213	<b>Transport means identification name identifier</b>	C	an..9
			This element will only be used if the transport stage qualifier is On-carriage transport (code 30 in element 8051 of this segment) to indicate the vessel identifier where the container will be loaded in the transshipment operation. Although it is strongly recommended to include this code, it is not mandatory as it may not be known at the moment that this message is sent. <i>Lloyd's Number (if e8067 = 1 and C222/e1131 =146)</i>		
O		1131	<b>Code list identification code</b>	C	an..17
		146	<i>Lloyd's number (IMO) (recommended)</i>		
		103	<i>Radio Call Sign</i>		
Ø		3055	<b>Code list responsible agency code</b>	€	an..3
		H	<i>Lloyd's register of shipping</i>		
		ZZZ	<i>Mutually defined</i>		
O		8212	<b>Transport means identification name</b>	C	an..35
			<i>Vessel name or other means of transport name (free text)</i>		

This element will only be used if the transport stage qualifier is On-carriage transport (code 30 in element 8051 of this segment) to indicate the vessel name where the container will be loaded in the transshipment operation.

⊖	8453	<del>Transport means nationality code</del> <del>Flag of means of transport (ISO country code)</del>	⊖	an..3
X	8281	<del>TRANSPORT MEANS OWNERSHIP INDICATOR CODE</del>	⊖	1 an..3



## 39 // Segment DTM

<b>Segment:</b>	<b>DTM</b> Date/Time/Period
<b>Position:</b>	0460 (Trigger Segment)
<b>Group:</b>	Segment Group 10 (Details of Transport) Conditional (Optional)
<b>Level:</b>	2
<b>Usage:</b>	Conditional (Optional)
<b>Max Use:</b>	1
<b>Purpose:</b>	A segment to indicate a expected date and/or time of container cargo train unloading operations with later land transport by rail.
<b>Comments:</b>	<i>Only one occurrence of this segment is used.</i>
<b>Notes:</b>	<i>Sample segment : DTM+137:200611141225:203'</i>

### Data Element Summary

	Data Element	Component Element	Name		
<b>Attributes</b>					
<u>M</u>	<u>C507</u>		<u>DATE/TIME/PERIOD</u>	<u>M</u>	<u>1</u>
<u>M</u>		<u>2005</u>	<u>Date or time or period function code qualifier</u>	<u>M</u>	<u>an..3</u>
			<i>137 Document/message date/time</i>		
<u>R</u>		<u>2380</u>	<u>Date or time or period value</u>	<u>C</u>	<u>an..35</u>
			<i>Date/time that the message was prepared.</i>		
<u>R</u>		<u>2379</u>	<u>Date or time or period format code</u>	<u>C</u>	<u>an..3</u>
			<i>203 CCYYMMDDHHMM</i>		

## 39 // 40 // Segment RFF

**Segment:** **RFF** Reference  
**Position:** 0480  
**Group:** Segment Group 10 (Details of Transport) Conditional (Optional)  
**Level:** 3  
**Usage:** Conditional (Optional)

**Max Use:** 1  
**Purpose:** A segment to provide alternative (non vessel operator's) voyage number and other references related to the pre-carriage or on-carriage means of transport.

**Comments:**  
*This segment will only be used if the transport stage qualifier is On-carriage transport (code 30 in element 8051 of TDT segment within this group) to indicate the vessel port call reference of the vessel where the container will be loaded in the transshipment operation. Although it is strongly recommended to include this information, it is not mandatory as it may not be known at the moment that this message is sent.*

**Notes:** *Sample segment :*  
**RFF+ATZ:1200600012**

### Data Element Summary

<u>Attributes</u>	<u>Data Element</u>	<u>Component Element</u>	<u>Name</u>		
M	C506		REFERENCE	M	1
M		1153	Reference code qualifier ATZ	M	an..3
			<i>Ship's stay reference number</i> Vessel Port Call Reference (Reference assigned by the Port Authority to the ship's stay in port) for the vessel where the container will be loaded in the maritime on-carriage transport in the transshipment operation.		
			<u>785</u> <u>Discharge Summary Declaration</u> The scale number assigned by the Port Authority to the ship where the container will be charged.		
R		1154	Reference identifier <i>Other reference number (if C506.e1153 = 'ATZ').</i> Vessel Port Call Reference (Reference assigned by the Port Authority to the ship's stay in port) for the vessel where the container will be loaded in the maritime on-carriage transport in the transshipment operation.	C	an..70
X		<del>1156</del>	<del>Document line identifier</del>	€	<del>an..6</del>
X		<del>4000</del>	<del>Reference version identifier</del>	€	<del>an..35</del>
X		<del>1060</del>	<del>Revision identifier</del>	€	<del>an..6</del>

## 40-41 // Segment LOC

**Segment:** **LOC** Place/Location Identification  
**Position:** 0500 (Trigger Segment)  
**Group:** Segment Group 11 (Place/Location Identification) Conditional (Optional)  
**Level:** 3  
**Usage:** Conditional (Optional)

**Max Use:** 2

**Purpose:** A segment identifying locations related to the transport details, such as: - place of departure

**Comments:**

*This segment will only be used if the transport stage qualifier is On-carriage transport (code 30 in element 8051 of TDT segment within this group) to indicate the next or the final port of discharge of the container after being loaded on the vessel referred in TDT segment of this group in the transshipment operation. It is mandatory to include the next port of discharge of the container in these cases.*

**Notes:** *Sample segment :  
LOC+11+NLRTM'*

### Data Element Summary

<u>Attributes</u>	<u>Data Element</u>	<u>Component Element</u>	<u>Name</u>			
M	3227		LOCATION FUNCTION CODE QUALIFIER	M	1	an..3
		11	<i>Place/port of discharge</i>			
			The next port of discharge of the container after being loaded on the vessel referred in TDT segment of this group in a transshipment operation within the same terminal or in a shuttle transshipment operation. To be included when the message refers to a Transport Discharge Instruction.			
		170	<i>Final port of discharge</i>			
			The final port of discharge of the container after being loaded on the vessel referred in TDT segment of this group in a transshipment operation within the same terminal or in a shuttle transshipment operation. To be optionally included when the message refers to a Transport Discharge Instruction.			
R	C517		LOCATION IDENTIFICATION	C	1	
R		3225	Location name code	C		an..25
			<b>UNLOCODE</b>			
		<del>1131</del>	<del>Code list identification code</del>	<del>C</del>		<del>an..17</del>
		<del>139</del>	<del>Port</del>			
		<del>3055</del>	<del>Code list responsible agency code</del>	<del>C</del>		<del>an..3</del>
		<del>6</del>	<del>UN/ECE (United Nations — Economic Commission for Europe)</del>			
O		3224	Location name	C		an..256
			<i>Place/port name (free text)</i>			
	<del>C519</del>		<del>RELATED LOCATION ONE IDENTIFICATION</del>	<del>C</del>	<del>1</del>	
		<del>3223</del>	<del>First related location name code</del>	<del>C</del>		<del>an..25</del>
			<del>1st related location code</del>			
		<del>1131</del>	<del>Code list identification code</del>	<del>C</del>		<del>an..17</del>
		<del>72</del>	<del>Container terminal</del>			
		<del>261</del>	<del>Consignee's premises</del>			
		<del>262</del>	<del>Consignor's premises</del>			
		<del>263</del>	<del>Packing and/or unpacking facility</del>			

		264	Storage facility		
		265	Repair facility		
		266	Marine berth		
		267	Marine wharf		
		268	Gate		
		269	Warehouse		
Ø		<b>3055</b>	<b>Code list responsible agency code</b>	€	an..3
		9	EAN (International Article Numbering association)		
		184	AU, ACOS (Australian Chamber of Shipping)		
		SMD	SMDG (Shipplanning Message Development Group)		
			Temporary code		
		ZZZ	Mutually defined		
Ø		<b>3222</b>	<b>First related location name</b>	€	an..70
			1st related location name (free text)		
Ø	<b>C553</b>		<b>RELATED LOCATION TWO IDENTIFICATION</b>	€	1
Ø		<b>3233</b>	<b>Second related location name code</b>	€	an..25
			2nd related location code		
Ø		<b>1131</b>	<b>Code list identification code</b>	€	an..17
		5	Facility identification		
		72	Container terminal		
		261	Consignee's premises		
		262	Consignor's premises		
		263	Packing and/or unpacking facility		
		264	Storage facility		
		265	Repair facility		
		266	Marine berth		
		267	Marine wharf		
		268	Gate		
		269	Warehouse		
Ø		<b>3055</b>	<b>Code list responsible agency code</b>	€	an..3
		9	EAN (International Article Numbering association)		
		184	AU, ACOS (Australian Chamber of Shipping)		
		SMD	SMDG (Shipplanning Message Development Group)		
			Temporary code		
		ZZZ	Mutually defined		
Ø		<b>3232</b>	<b>Second related location name</b>	€	an..70
			2nd related location name (free text)		
X	<b>5479</b>		<b>RELATION CODE</b>	€	1 an..3

## 41//42 // Segment NAD

Segment: **NAD** Name and Address  
 Position: 0520  
 Group: Segment Group 6 (Equipment Details) Mandatory  
 Level: 2  
 Usage: Mandatory  
 Max Use: 3  
 Purpose: A segment to specify a related address or party, such as: - container operator  
 Comments:

*This segment shall be used to indicate the Shipping Line (party function code qualifier equal to CA) that is responsible for the transport of the container (which may differ from the Shipping Line/ship-owner which is operating the vessel). It may also be used to indicate the carrier's agent of this Shipping Line (party function code qualifier equal to CG), the consignee of the goods(CN), the Second operator (HR) and the Regular Service Code (SLS).*

Notes: *Sample segment :  
NAD+CA+MSCU '*

### Data Element Summary

<u>Attributes</u>	<u>Data Element</u>	<u>Component Element</u>	<u>Name</u>			
M	3035		<b>PARTY FUNCTION CODE QUALIFIER</b>	M	1	an..3
		CA	<i>Carrier</i>			
			To be used to indicate the Shipping Line that is responsible for the transport of the container (which may differ from the Shipping Line/ship-owner which is operating the vessel). Mandatory. Must be a carrier's agent line valid to the container terminal.			
		CG	<i>Carrier's agent</i>			
			To be used to indicate the carrier's agent of the Shipping Line that is responsible for the transport of the container (which may differ from the Shipping Line/ship-owner which is operating the vessel). It is optional.			
		<u>CN</u>	<u>Consignee</u>			
			<u>Consignee of the goods (by custom)</u>			
		HR	<i>Second Shipping line</i>			
			Charging line (second operator). Optional. It can be included by vessel's agent in a COPORD document.			
		SLS	<i>Regular Service Code (Shipping Line Service)</i>			
			Regular service of the vessel where the container will be loaded in a transshipment operation. This occurrence is only necessary when the message refers to a Transport Discharge Instruction (code 118 of element 1001 in BGM segment) and the equipment status is Transshipment within the same terminal or Shuttle Transshipment (codes 6 and 62 in element 8249 of EQD segment). Optional.			
O M	C082	3039	<b>PARTY IDENTIFICATION DETAILS</b> <b>Party identifier</b> <b>Company code</b>	C M	1	an..35
			Codes agreed among valenciaportpcs.net system will be used.			
⊖		<del>1131</del>	<del><b>Code list identification code</b></del>	⊖		an..17
			<del>160</del> <i>Party identification</i>			
			<del>172</del> <i>Carriers</i>			
⊖		3055	<del><b>Code list responsible agency code</b></del>	⊖		an..3

		7	<i>CEFIC (Conseil Europeen des Federations de l'Industrie Chimique)</i>		
		9	<i>EAN (International Article Numbering association)</i>		
		10	<i>ODETTE</i>		
		16	<i>US, D&amp;B (Dun &amp; Bradstreet Corporation)</i>		
		20	<i>BIC (Bureau International des Containeurs)</i>		
		87	<i>Assigned by carrier</i>		
		163	<i>US, FMC (Federal Maritime Commission)</i>		
		166	<i>US, National Motor Freight Classification Association</i>		
		184	<i>AU, ACOS (Australian Chamber of Shipping)</i>		
		SMD	<i>SMDG (Shipplanning Message Development Group)</i>		
			<i>Temporary code</i>		
O	C058		<b>NAME AND ADDRESS</b>	C	1
			<i>The use of C058 is allowed to accomodate specific local requirements that exist in several ports. The use of C058 however is in general not recommended - whenever possible it is suggested to use C082 instead.</i>		
M		3124	Name and address description	M	an..35
O		3124	Name and address description	C	an..35
⊖		3124	<del>Name and address description</del>	€	an..35
⊖		3124	<del>Name and address description</del>	€	an..35
⊖		3124	<del>Name and address description</del>	€	an..35
X	C080		<b>PARTY NAME</b>	€	1
X		3036	Party name	M	an..35
X		3036	Party name	€	an..35
X		3036	Party name	€	an..35
X		3036	Party name	€	an..35
X		3036	Party name	€	an..35
X		3045	Party name format code	€	an..3
X	C059		<b>STREET</b>	€	1
X		3042	Street and number or post office box identifier	M	an..35
X		3042	Street and number or post office box identifier	€	an..35
X		3042	Street and number or post office box identifier	€	an..35
X		3042	Street and number or post office box identifier	€	an..35
X	3164		<b>CITY NAME</b>	€	1 an..35
X	C819		<b>COUNTRY SUB-ENTITY DETAILS</b>	€	1
X		3229	Country sub-entity name code	€	an..9
X		1131	Code list identification code	€	an..17
X		3055	Code list responsible agency code	€	an..3
X		3228	Country sub-entity name	€	an..35
X	3251		<b>POSTAL IDENTIFICATION CODE</b>	€	1 an..17
X	3207		<b>COUNTRY NAME CODE</b>	€	1 an..3

## 42-43 // Segment CNT

**Segment:** **CNT** Control Total  
**Position:** 0530  
**Group:**  
**Level:** 0  
**Usage:** Conditional (Optional)  
**Max Use:** 1  
**Purpose:** A segment to specify the number of containers in the message, explicitly given by the sender.

**Comments:**  
**Notes:** *Sample segment :*  
*CNT+1:1'*  
*CNT+16:25'*

### Data Element Summary

<u>Attributes</u>	<u>Data Element</u>	<u>Component Element</u>	<u>Name</u>		
M	C270		CONTROL	M	1
M		6069	Control total type code qualifier 1 Algebraic total of the quantity values in line items in a message 16 Total number of equipment	M	an..3
M		6066	Control total value Dummy value 1 (if e6069 = 1) Number of EQD segments in the message (if e6069 = 16)	M	n..18
X		6411	Measurement unit code	C	an..3

## ~~43~~ // ~~44~~ // Segment UNT

---

**Segment:** **UNT** Message Trailer  
**Position:** 0540  
**Group:**  
**Level:** 0  
**Usage:** Mandatory  
**Max Use:** 1  
**Purpose:** A service segment ending a message, giving the total number of segments in the message (including the UNH & UNT) and the control reference number of the message.

**Comments:**

**Notes:** *Sample segment :*  
*UNT+32+ T1115200310230'*

### Data Element Summary

<u>Attributes</u>	<u>Data Element</u>	<u>Component Element</u>	<u>Name</u>			
M	0074		NUMBER OF SEGMENTS IN A MESSAGE <i>Total number of segments in the message</i>	M	1	n..6
M	0062		MESSAGE REFERENCE NUMBER <i>Message reference identical to e0062 in UNH segment</i>	M	1	an..14



## 44//45 // Samples

---

### 1.1 // COPORD

UNB++T126+VALENCIAPORT+060119:1123'  
UNH+TTTT6000001038+COPRAR:D:00B:UN:SMDG20'  
BGM+118::COPORD+TTTT2006I001019+9+AB'  
RFF+AAY:Una con todo'  
TDT+20+147+1++A99999999::EMPRESA DE PRUEBAS.A.+++P3MU9:103::NOFERTGHYTIC'  
RFF+ATZ:1200500154'  
LOC+11+ESVLC::Valencia'  
NAD+MS+A99999999+NOMBRE EMPRESA '  
NAD+MR+A44444444+NOMBRE DE EMPRESA '  
NAD+TR+A66666666'  
EQD+CN+EQUA1222222+1000::10?'  
CERRADO/CARGA SECA++6+5'  
RFF+BL:1'  
RFF+BN:2'  
LOC+7+ESBCN::Barcelona'  
LOC+9+AEAJM::Ajman'  
MEA+WT+G+KGM:900'  
DIM+6+CMT:1'  
DIM+5+CMT:7'  
DIM'  
DIM+8+CMT::7'  
DIM+7+CMT::7'  
DIM'  
DIM+13+CMT::7'  
TMP+2+8:CEL'  
RNG+5+CEL:9:9'  
SEL+4'  
SEL+4'  
SEL+5'  
SEL+5'  
FTX+AAI+++fdadfffffffff'  
FTX+ACF++REINFORCED'  
FTX+HAN++OD'  
DGS+IMD+1.1D'  
DGS+IMD+2.1'  
TDT+30+12390+1+++++3FKI7:103::KWANZA'  
DTM+137:200611141225:203'  
RFF+ATZ:3200600008'  
LOC+11+ESBCN::Barcelona'  
NAD+CG+A22222222+NOMBRE DE ENPREDSA.'  
NAD+CA+IEL+IEL'  
NAD+HR+IEL+IEL'  
UNT+42+T1266000001038'  
UNZ+1'

### 1.2 // COPLIS

UNB+UNOA:2+VPDE+VALENCIAPORT+061018:1732+20061018173343'  
UNH+VPRT6000127398+COPRAR:D:00B:UN:SMDG20'  
BGM+121::COPLIS+VPDE2006E001031+9+AB'  
DTM+137:200610181732:203'  
RFF+AAY:prueba EDI'

TDT+20+111+1++VPDE:::VALENCIAPORT  
DESARROLLO+++9130339:146::FERNANDO MARIA PERED'  
RFF+ATZ:1200500242'  
LOC+9+ESVLC'  
NAD+MS+VPDE+VALENCIAPORT - EQUIPO DESARROLLO'  
NAD+MR+VPDE+VALENCIAPORT - EQUIPO DESARROLLO'  
NAD+TR+MMMM+NOMBRE DE EMPRESA '  
NAD+HR+CTCD+LINEA CANARIAS'  
NAD+CG+VPDE+VALENCIAPORT - EQUIPO DESARROLLO'  
EQD+CN+EISU0101011+2089:::20?'  
CARGAS HÚMEDAS++2+4'  
LOC+11+ESBCN:::barna'  
LOC+76+ESBCN:::barna'  
LOC+7+ESBIO:::bilbao'  
DIM+6+CMT:1'  
SEL+111'  
FTX+HAN++OD'  
DTM+137:200611141225:203'  
NAD+CG+VPDE+VALENCIAPORT - EQUIPO DESARROLLO'  
NAD+CA+CTCD+LINEA CANARIAS'  
UNT+24+VPRT6000127398'  
UNZ+1+20061018173343'

- EQUIPO



**valenciaport**  **pcs.net**  
P o r t C o m m u n i t y S y s t e m

Centro de Atención a Usuarios  
Tel.: 902 88 44 24 / 902 88 44 94  
[www.valenciaportpcs.net](http://www.valenciaportpcs.net)  
[cau@valenciaportpcs.net](mailto:cau@valenciaportpcs.net)